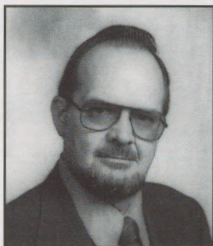


# CONVENTION



Barry Krum, FRCI  
Chairman, Convention Committee

## Convention Update

By Barry Krum, FRCI

Our upcoming convention in San Antonio, Texas, is your opportunity to meet with companies from the U.S., Canada, and overseas. You'll see craftsmen split fresh slate and apply copper, clay tiles, and wood

shakes when you visit our live roofing demonstrations. You'll hear experts in various fields discuss the latest in roofing technology and provide financial and legal information that you can take home and use in your own practice. Finally, you'll enjoy golfing, dining, dancing, and mixing with your friends and colleagues.

Come enjoy the charm of San Antonio, and treat yourself to the finest trade show and technical seminars that the roofing industry has to offer.

On behalf of RCI, I wish to thank all the companies exhibiting at our show, especially those who have pledged their support of the convention.

## Supporters of the Convention

### Sponsors

Dow Plastics  
GAF Building Materials Corporation  
T. Clear Corporation  
Topcoat  
Zurn Industries, Inc.

### Supporters

Bryant Universal Roofing  
Nord Bitumi, U.S., Inc.  
Olympic Manufacturers Group, Inc.  
Soprema Rfg. & Waterproofing

### Backers

CDA  
Polythane Systems/GE  
U-Flow Roof Drain Sys., Inc.  
United Coatings

## EXHIBITORS AT RCI'S NINTH NATIONAL CONVENTION IN SAN ANTONIO

As of December, the following had signed up to exhibit at the convention.

ALLIED SIGNAL INC.  
AMOCO  
ASHLAND CHEMICAL  
BARRETT CO.  
BITEC  
BONDCOTE RFG. SYS.  
BRYANT UNIVERSAL ROOFING, INC.  
BUTLER RFG. SYS.  
CARLISLE SYNTEC SYSTEMS  
CDA  
CONSTRUCTION FASTENERS, INC.  
CONTINENTAL ROOF SYSTEMS  
CUSTOM CURB, INC.  
DOW NORTH AMERICA  
DURO LAST  
ENVIROSPEC, INC.  
ES PRODUCTS  
FIRESTONE BUILDING PRODUCTS  
FRY REGLET  
GAF CORPORATION  
GATE ROOFING MFG. INC.  
GENFLEX ROOFING SYSTEMS  
GEORGIA PACIFIC CORP.  
GLOBE VEDAG CORP.  
GREATER SAN ANTONIO CSI  
GS ROOFING PRODUCTS CO.  
HUMANE MFG.

HYGROWICK-INTERNATIONAL  
IKO MANUFACTURING  
ITW BUILDLEX  
JPS ELASTOMERICS  
KARNAK CORP.  
KOPPERS INDUSTRIES  
LEAD INDUSTRIES  
LINEL INCORPORATED  
MERIK MARKETING  
METAL-ERA, INC.  
MM SYSTEMS CORP.  
NATIONAL COATINGS CORP.  
NESTE THERMO  
NORD BITUMI  
NORTH AMERICAN ROOFING SYSTEMS  
NORTH CAROLINA FOAM INDUSTRIES  
NRCA  
NRG BARRIERS  
OLYMPIC MFG GROUP, INC.  
PARTEK INSULATION  
PERFORMANCE ROOF SYSTEMS, INC.  
PITTSBURGH CORNING  
PLASTECO INC.  
POLYTHANE SYSTEMS/GE  
PORTALS PLUS, INC.  
PROSPEX RFG PROD  
PSI

RAWLPLUG  
REVERE COPPER PRODUCTS INC.  
SARNAFIL INC.  
SBC INDUSTRIES  
SCHULLER INTERNATIONAL, INC.  
SEAL-DRY/USA, INC.  
SEAMAN CORPORATION  
SIBO, INC.  
SIPLAST INC.  
SOPREMA RFG. & WATERPROOFING  
SPI/PFCD  
STA-FAST ROOFING PRODUCTS  
STEELOX SYSTEMS, INC.  
T. CLEAR CORP.  
TAMKO ASPHALT PRODUCTS, INC.  
THALER ROOFING SPECIALTIES PRODUCTS  
TOPCOAT  
U-FLOW ROOF DRAIN SYS., INC.  
UC INDUSTRIES  
UNISTRUT  
UNITED COATINGS  
US INTEC  
VERSICO INC.  
W.P. HICKMAN CO.  
ZURN INDUSTRIES, INC.

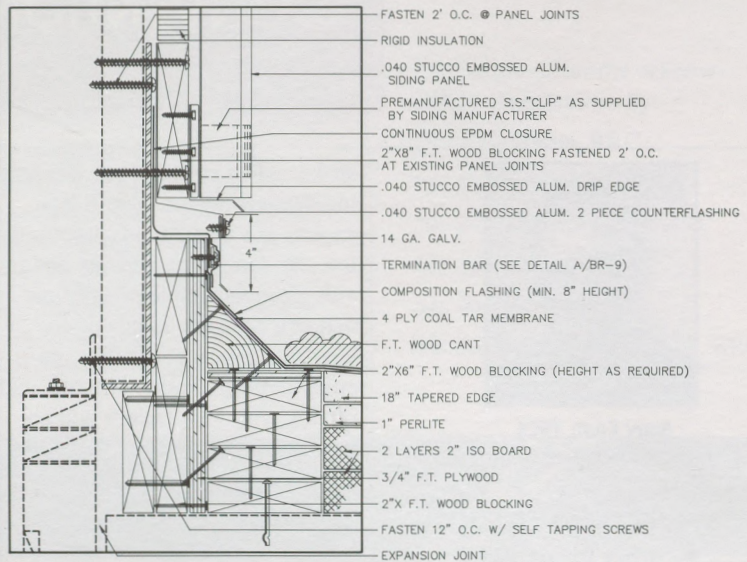
## Documents That Win Awards

You spend hours in front of the computer, perfecting yet another project manual or report. You know the importance of producing documents that are clear, organized, thorough, and accurate. However, your document can serve you another way: it can gain recognition and win honors when you enter RCI's Document Competition, held yearly at its National Convention. Joining the competition proved a win-win situation for last year's first-place winners: H.B. Fishman & Co., Inc.; Law Engineering, Inc.; and Austin•Dillon•Cook Engineers. These companies walked away with something tangible — tangible enough to take to the bank.

"We include mention of this award in our resume and find that many potential clients are impressed," said John Wooten, RRC, President of H.B. Fishman & Co. "This prize adds to and enhances our marketing effort."

Even for those who don't win, the competition has value because it provides increased visibility. All entries are prominently displayed in the exhibit hall, where manufacturers and contractors regularly stop by to view them.

Christopher English, RRC, Chairman of the Construction Documents Committee, believes that the competition is an educational tool as well. "This display shows the width and depth of roof consulting practice. It highlights the skills, the regional practices, and the variety inherent in our profession. It's interesting to see how professionals approach various problems in different ways. More important than the differences, though, are the similarities. I'm always glad to see the same, high standards applied to construction documents and reports nationwide."



**A** EXPANSION JOINT @ OVERLAY SIDING  
BR-17

Detail from award-winning Project Manual Submitted by H.B. Fishman & Co., Inc.

## Last Year's Large Project Winner

The cover on this issue shows a detail from last year's winning document in the large project category. H.B. Fishman & Co., Inc., of South Windsor, Connecticut, took first place with their project manual, *Roof Replacement Project: Bulkeley and Weaver High Schools*.

"This document was truly a group effort," explains president John Wooten, RRC. "The credit goes to our entire company. I personally reviewed all the displays, and, believe me, the competition was stiff. We were thrilled to have won."

H.B. Fishman & Co., Inc., established in 1979, is a roof consulting firm specializing in moisture protection for industrial and institutional facilities, historical structures, and the residential or commercial clients. Services are provided for litigation, investigation and inspection, design and specifications for new and renovative roofing or waterproofing projects.

## 1993 FIRST PLACE WINNERS

**Large Project:** H.B. Fishman & Co., Inc.

**Small Project:** Law Engineering Inc.

**Roof Survey:** Austin•Dillon•Cook  
Engineers

## 1993 SECOND PLACE WINNERS

**Large Project:** NTH Consultants, Ltd.

**Small Project:** Christopher English &  
Associates, Inc.

**Roof Survey:** Christopher English &  
Associates, Inc.



Christopher English, RRC  
Chairman, Construction Documents  
Committee  
RCI Executive Secretary

### You Be The Judge

By Christopher English, RRC

A panel of RCI volunteers is requested to judge the 1994 Document Competition to be held at the RCI Ninth National Convention in San Antonio, Texas. Three categories of submissions, large roofing/waterproofing project, and roof reports are to be reviewed for excellence in organization, format, clarity, and appearance. Judging the competition will require a few hours at the convention on Sunday, April 10, 1994.

It is desired that a cross-section of RCI members be represented on the panel and we hope to establish a three-person jury consisting of a professional member who is either an architect or engineer, another profes-

sional roof consultant, and an industry member who is also a contractor.

If you are going to San Antonio and would like a sneak preview of the best that roof consultants from all over the country have to offer, call or drop a line to Headquarters before April 1, 1994.

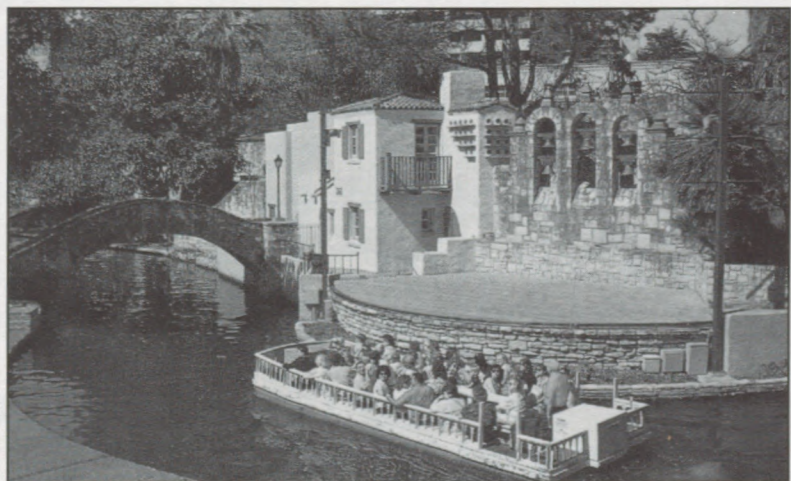
### Attendees! Spouses!

Are you planning to attend our convention in San Antonio?

Bring your spouse and children along, too, because San Antonio is filled with treasures like the

Alamo, Fiesta Texas, and Sea World.

RCI is sponsoring (at no extra cost to you) a spouse orientation of San Antonio followed by an entertaining boat ride on the famous San Antonio River. The orientation will launch your exploration of San Antonio, help you plan activities, and offer superb shopping tips. From the riverboat tour, you'll see the cafes, boutiques, crafts and novelty shops that give the Riverwalk its distinctive character. Children will enjoy this exciting ride, too, so bring the entire family. Come discover San Antonio's cozy, old town atmosphere!



Spouses will enjoy the beautiful Riverwalk.

## Live Display Of Shake And Shingle Application Enhances Trade Show



Martin Obando, CSI, RCI

Martin Obando will be one of several artisans on hand at the trade show's live exhibit of roofing applications. Marty will demonstrate the best techniques for applying cedar shakes and shingles, showing the ins and outs of flashings, eaves, hips, and ridges. He'll explain what

to look for when performing an inspection, with special emphasis placed on what can and cannot be repaired. He'll discuss the mistakes some roofing professionals make when they tear off perfectly good roofs that could last another 10-15 years if repaired and treated properly. Marty will also answer your questions and provide valuable information to help you better serve your clients.

The cedar shakes used for this demonstration will be cut on-site, using a mallet and froe, from a block of virgin Red Cedar.

Marty has a strong roofing and training background, having started

back in 1956, when, as superintendent, he taught most types of roofing. These included asphalt/glass fiber shingles, tile, slate, wood shakes and shingles, metal and built up roofing. He has instructed for the A.F. of L. Carpenters, Roofers and Sheet Metal Unions, and a good number of trade schools, including the crews which worked on the Camp David, MD, project. He has taught trouble-shooting and the application of wood shakes and shingles for the Cedar Shake & Shingle Bureau for the last 27 years. He is also past chairman and present secretary of the RCI Codes and Standards Committee.

## Live Roofing Demonstrations Add To RCI's Trade Show!

At our trade show in San Antonio, artisans will demonstrate how to handle and properly install slate, copper, clay, and wood shakes.

Evergreen State Co. will provide slate fresh from the quarry. You'll see it split, cut, and shaped right there on the floor. Nearby will be a video showing slate extraction — something you don't see everyday!

Through the efforts of Revere Copper Products, Inc., artisans will shape and install copper roofing. Discover proper seaming, soldering, and folding techniques necessary for the application of this elegant and durable roofing material.

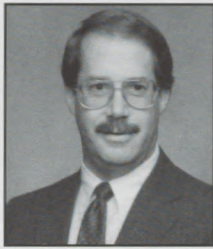
Thanks to Ludowici-Celadon, you'll learn about clay tile valleys, ridges, and edge treatment.

Finally, courtesy of Cedar Shake and Shingle Bureau, you'll see the correct application of ridge, valley, and eaves details of wood roofing.

**SEE THESE LIVE DEMONSTRATIONS  
ON BOTH DAYS OF THE TRADE SHOW!**

# RCI Introduces Standard Symbols

By Robb Smith, RRC



**Robb Smith, RRC**  
Region 6 Director and Past Chairman,  
Standards and Practices Committee

RCI is pleased to release a first-of-its-kind document, "Standard Symbols for Roof Conditions and Components". The document is the result of work by the Standards and Practices Committee 100.0, who compiled the symbols with the assistance of other industry organizations and roof consulting firms. All design professionals, roof consultants and contractors will benefit when they purchase these symbols from RCI.

The rapid growth of the roof consulting industry created a need for standardization of widely used identifying marks that allow quick reading of roof plans. These symbols will

permit you to communicate conditions and components with greater ease and clarity. If you have been using a large and varied group of symbols for your work, you may find that many of these are similar or identical to what you're used to. Others, however, will be new to you, and will prove very helpful in enhancing your roof plan illustrations.

In developing "Standard Symbols for Roof Conditions and Components", we first drew from those symbols already used in architecture. We did not want to alter what architects and drafters had been using for decades. Building on the past, we created new figures that were simple to draw, clean in their presentation, and were logical and relevant to the conditions or component.

Here for your review, is a sampling from "Standard Symbols for Roof Conditions and Components." Included are drawings from both the "Roof Conditions" and "Cores/Moisture" sections; the whole document contains 98 symbols, all of the same, high quality seen here, comprising a

total of 14 sections. Examples of other sections found in the document are "Penetrations", "Perimeters", and "Air Handling Equipment Ducts", to name just a few.

You can purchase this document directly from RCI; we know you will find it a useful tool in your practice. This is a new idea and, after using it, you may have ideas for other symbols that may be appropriate for inclusion on this list. We invite you to submit these symbols to RCI Headquarters, attention of the Standards and Practices Committee, and they will be considered for inclusion in the next edition.

## ORDERING INFORMATION

To obtain your "Standard Symbols for Roof Conditions and Components", use the order form on the outside cover of *Interface*, or call RCI at 800-828-1902 or 919-859-0742.

Single hard copies, (8 1/2" x 11"), are \$5.00 and AutoCad disk file are \$25.00 for RCI members and \$35.00 for non-members. (Shipping and handling charges will be added.)

## ROOF CONDITIONS

	BLISTERING
	DEBRIS
	LEAK AREA
	MEMBRANE HOLE
	PICTURE FRAMING
	PONDING
	RIDGING
	SPLIT MEMBRANE
	VEGETATION
	RIDGE
	HATCH
	SATELLITE DISH

## CORES/MOISTURE

	CORE SAMPLE
	WITH SAMPLE IDENTIFIER
	CONFIRMED MOISTURE DAMAGE
	MOISTURE PROBE-DRY
	MOISTURE PROBE - MOIST
	MOISTURE PROBE - WET
	MOISTURE RELIEF VENT
	ROOF PATCH