

APA Tests Engineered Wood

By John Newark

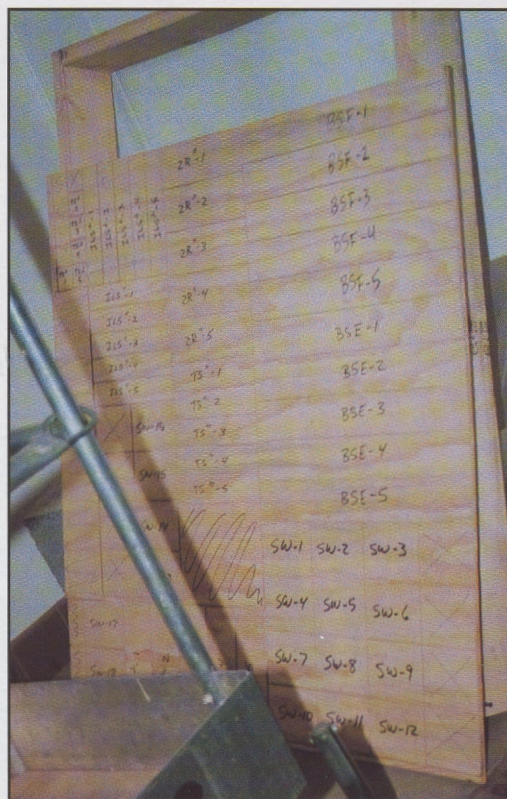
On Monday, Nov. 18, following RCI's Building Envelope Symposium in Seattle, WA, Robb Smith, RRC, RRO and wife Mary joined Meg Conner, RCI membership coordinator, and me on a visit to the research and testing facilities of APA—the Engineered Wood Association in Tacoma, Washington. (We may have travelled 3,000 miles to get there, but we were in the neighborhood...)

I have always been impressed by the quality of the technical reports that John Rose, PE, and his staff have produced (see the accompanying sidebar on how to become a professional associate member of APA and receive these publications). Accordingly, I took the opportunity to visit the testing facilities that have given rise to these reports.

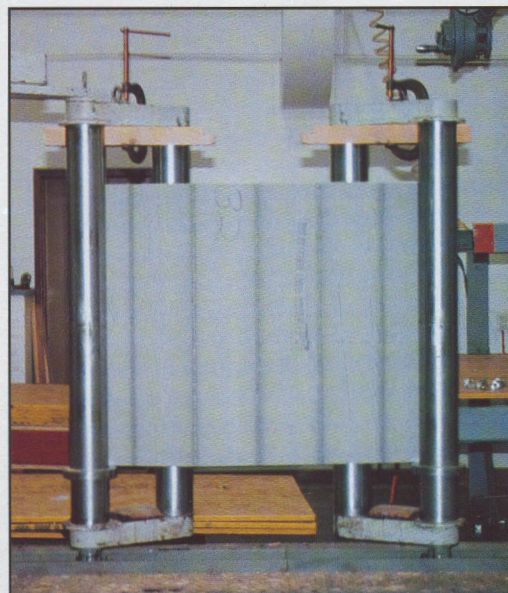
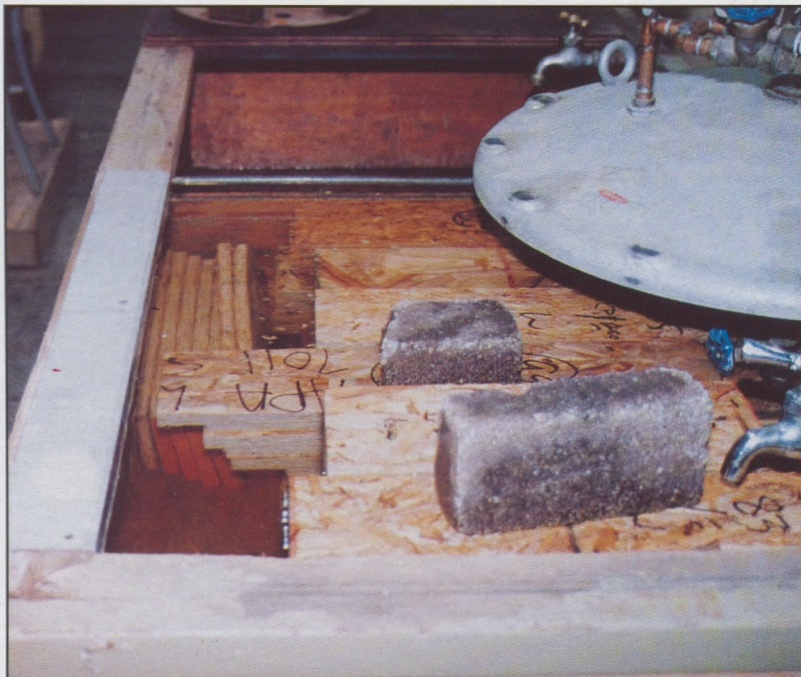
APA (originally the American Plywood Association) has demonstrated a commitment to the roofing industry through its ongoing testing and research efforts. You see these types of products daily in the field and APA has worked to set the standards associated with them. I would highly recommend that all professionals working in the roofing industry avail themselves of the numerous technical reports and bulletins produced by the APA. These are excellent sources of quality information that can truly make a difference.

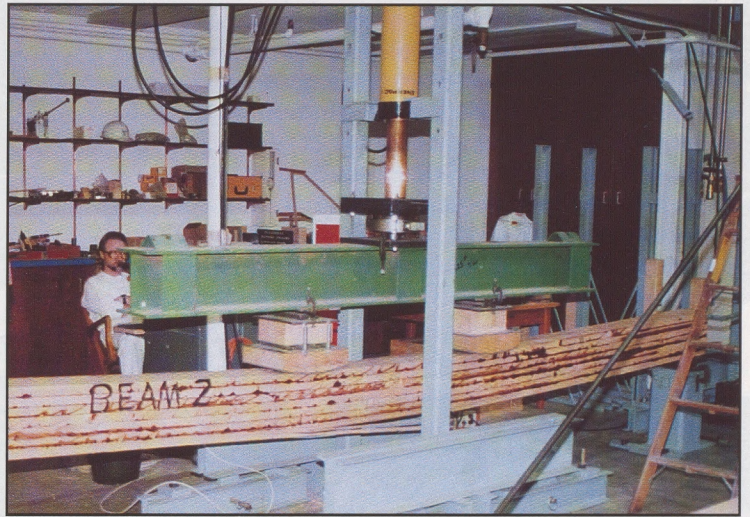
On the day of our visit, several tests were in progress at the facility and we were invited to watch any that interested us. As the name "The Engineered Wood Association" suggests, APA tests more than sheets of plywood. The accompanying photos give you a glance into the many different types of engineered wood that pass through the testing labs of APA.

Special thanks to the good folks of APA for their support, to Bob Potter for arranging our visit, and to John Rose for his time, gracious hospitality, and patience with my endless questions.



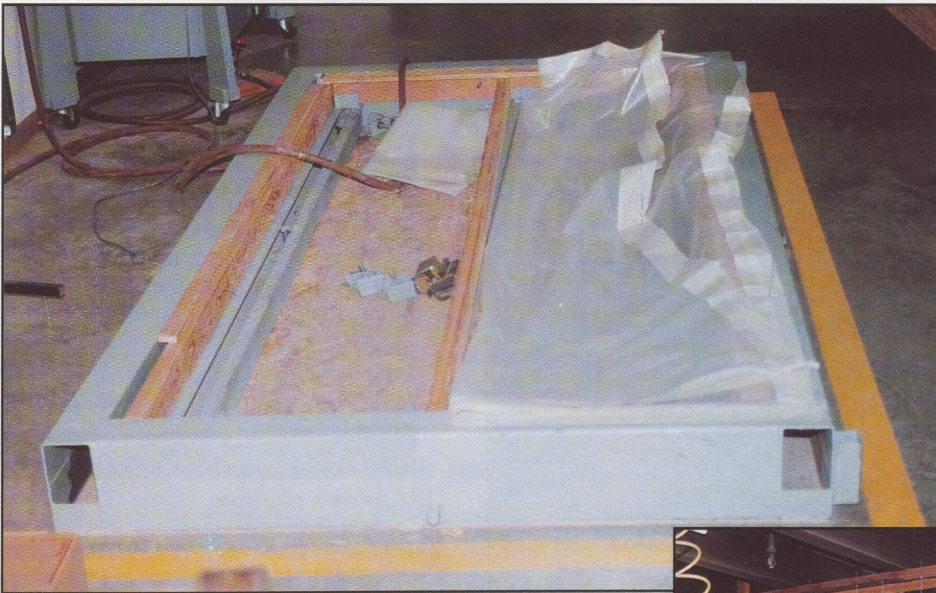
(Above) A sheet of plywood is readied for cutting into test samples. (Bottom left) Oriented strand board samples are immersed in water and saturated prior to testing. (Bottom right) Exterior sheathing is subjected to bending in this test.





(Left) A glued beam is selected for testing (just try and get a field sample of one of these sometime).

(Above) Load is applied to the sample marked beam #2.



(Left) A joist and deck assembly is being prepared for a test of resistance to fastener withdrawal under negative pressure. Hose attachments vary the pressure on the test sample. (Below) Proof that they believe in their product—the tool case is built of plywood. (I took this picture on the way out to prove I hadn't taken any toys.)

(RCI photos by John Newark)

APA Associate Professional Membership

APA has an Associate Professional Membership available to interested consultants. The membership costs \$50.00 annually and members receive a binder absolutely packed with technical reports and bulletins and update reports on a regular basis.

Call Shelly Devenny at APA (206) 565-6600 for information and an application.

