

# THE GUIDE

AN OVERVIEW OF IIBEC SERVICES

2025–2026

# TABLE OF CONTENTS

---

WHAT'S INSIDE	PAGE
About IIBEC .....	3
Strategic Plan .....	4
Executive Committee.....	6
Region Directors .....	8
IIBEC Staff .....	10
Committees .....	11
IIBEC Regions & Chapters .....	14
IIBEC-Affiliated Chapters .....	15
Advocacy .....	22
Code of Ethics .....	24
Credential Programs .....	26
Education Programs.....	32
Premier Events.....	37
Periodical Publications .....	39
Digital Resources .....	40
Opportunities for Outreach.....	41
Foundations.....	42
IIBEC Honorees.....	46
Bookstore Best Sellers.....	50
IIBEC Staff Contact Information .....	53
Advertisers' Index.....	53
Application for Membership .....	54



# ABOUT IIBEC

The International Institute of Building Enclosure Consultants (IIBEC) is a global association of professionals who specialize in roofing, waterproofing, exterior wall consulting, and building enclosure commissioning. From air barriers to roof assessments and facade inspections, IIBEC members bring expertise to every type of building enclosure issue.

Founded in 1983 as the Roof Consultants Institute, the organization rebranded in 2019 to reflect its broader scope. Today, IIBEC has over 3,900 members worldwide, offering impartial design, repair and restoration planning, quality assurance, legal testimony, and other building enclosure consulting services—all grounded in a strict code of ethics focused on professionalism, integrity, and competence without affiliation to specific products or manufacturers.

IIBEC delivers practical education on enclosure technologies and commissioning, publishes a technical journal, and hosts regional and international events to foster professional networking and knowledge exchange.

## **IIBEC CREDENTIALS ARE INDUSTRY BENCHMARKS, INCLUDING:**

- Registered Building Enclosure Consultant (RBEC®)
- Registered Roof Consultant (RRC®)
- Registered Waterproofing Consultant (RWC®)
- Registered Exterior Wall Consultant (REWC®)
- Registered Roof Observer (RRO®)
- Registered Exterior Wall Observer (REWO®)
- Certified Building Enclosure Commissioning Provider (CBECxP®)

The RCI-IIBEC Foundation (US) and RCI Foundation Canada support research and education across the building enclosure field.

Headquartered in Raleigh, North Carolina, IIBEC is led by a volunteer board of directors, global member committees, and a professional staff. Whether you're a consultant, building owner, or construction professional, IIBEC is your resource for trusted expertise in building enclosures.

Learn more at [iibec.org](https://iibec.org) or call 919-859-0742 / 800-828-1902.

**For more  
information and  
up-to-date news,  
please visit:**

**[iibec.org](https://iibec.org)**

This guide is published by the International Institute of Building Enclosure Consultants (IIBEC). Copyright 2025 IIBEC. All rights reserved. No portions of this publication may be copied or published in any form without permission. Please address all requests to IIBEC, 434 Fayetteville St., Suite 2400, Raleigh, NC 27601. Phone: 919-859-0742 or 800-828-1902. Fax: 919-859-1328. The IIBEC logo, the name *IIBEC Interface*, and the titles "Registered Roof Consultant," "Registered Waterproofing Consultant," "Registered Exterior Wall Consultant," "Registered Roof Observer," "Registered Exterior Wall Observer," "Registered Building Enclosure Consultant," and "Certified Building Enclosure Commissioning Provider" (abbreviated RRC®, RWC®, REWC®, RRO®, REWO®, RBEC®, and CBECxP®, respectively) are the property of IIBEC and may not be used without permission.

# STRATEGIC PLAN

## STRATEGIC PLAN

2024 - 2026



### CORE PURPOSE

*To advance the profession of building enclosure consulting*

### VISION

*IIBEC is universally recognized as the leading authority in building enclosure consulting*

### CORE VALUES

- Ethical, independent, objective, and unbiased practice
- Pursuit and exchange of knowledge
- Commitment to the profession and industry
- Sustainability of building enclosures

### VALUE OF IIBEC

*Be the premier technical, educational, and networking resource of the building enclosure profession.*

#### OBJECTIVES:

- Increase brand awareness within the building enclosure profession and industry and the value of working with IIBEC members.
- Increase the value proposition of IIBEC for all members.
- Increase support for each of IIBEC's core competencies: roofing, exterior walls, waterproofing, and building enclosure commissioning.
- Increase understanding and knowledge of the building enclosure profession and industry.
- Increase emphasis of the IIBEC Code of Ethics.
- Improve chapter effectiveness and promotion of IIBEC and local activities.



*Advocate for consultant members at all levels of government.*

## ADVOCACY

### OBJECTIVES:

- Increase involvement in the development of codes and standards to promote requirements needed to ensure the safety, resilience and sustainability of building enclosure systems.
- Increase advocacy efforts to influence procurement issues to protect the integrity and transparency of taxpayer funded projects.
- Increase engagement with outside organizations to promote legislative efforts.
- Increase efforts to promote IIBEC member credentials and services to government entities.
- Increase resources, tools, and training to chapters to engage in local, state and provincial advocacy efforts.



## CREDENTIALS

*Lead the industry in building enclosure consulting credentials.*

### OBJECTIVES:

- Grow the return on investment for IIBEC credentials holders.
- Increase industry use of IIBEC credentialed individuals by owners.
- Increase the number of individuals who hold IIBEC credentials.
- Obtain accreditation through ANSI National Accreditation Board (ANAB) for IIBEC credentials.



*Empower members to achieve and sustain business and professional success.*

## KNOWLEDGE TRANSFER

### OBJECTIVES:

- Increase educational offerings in the following areas: sustainability, resiliency, technology, codes and standards, business and professional development, and hands-on applications.
- Ensure the diversity of the Core Competencies throughout the educational programming.
- Expand the database of technical resources to enhance member value.
- Develop ethics training for IIBEC members and credential holders.
- Expand and update IIBEC education tools and resources to promote effective chapter leadership.



[iibec.org/strategic-plan](https://iibec.org/strategic-plan)

# EXECUTIVE COMMITTEE

## PRESIDENT

**Christian (Chris) Dawkins, PE**



Dawkins is a principal consulting professional engineer and building enclosure consultant at Beech Consulting Inc. / Engineered Solutions International LLC in Duluth, Georgia. He was a Georgia Chapter executive board member (secretary, treasurer, vice president, president, and past president) from 2014 until 2018, and then IIBEC's Region II director from 2019 to 2021.

### **BEECH CONSULTING INC.**

2055 Sugarloaf Circle, Suite 550 • Duluth, GA 30097  
P: 770-476-2362  
[chris.dawkins@beechconsulting.com](mailto:chris.dawkins@beechconsulting.com)

## 1ST VICE PRESIDENT

**Jennifer Hogan, REWC, RRO, LEED AP, Certified Passive House Consultant**



Hogan is the recipient of the IIBEC Emerging Professionals Award of Excellence and OBEC's Rising Star Award. She is passionate about building sciences, energy performance, and of course, baseball. She has been a building science consultant for over 18 years and uses her experience and knowledge to help clients achieve their energy and carbon goals as the leader of the Energy and Carbon Reduction team at Pretium.

### **PRETIUM ENGINEERING INC.**

B12-3375 North Service Rd. • Burlington, ON L7N 3G2 Canada  
P: 905-333-6550  
[jennifer.hogan@pretiumeng.com](mailto:jennifer.hogan@pretiumeng.com)



## 2ND VICE PRESIDENT

**Burt Carver, RRC, RRO**



Carver is the owner of Apex Building Sciences Inc., founded in 2008. He has been involved with the RRO Exam Subcommittee, the RRC Exam Subcommittee, the Chapter Development Committee, and the Advocacy Committee. He is the past president of the IIBEC Western Canada Chapter, and in 2018 he received the IIBEC Outstanding Volunteer Award. Also, in 2024 he was the recipient of the IIBEC President's Award.

### APEX BUILDING SCIENCES INC.

301-D 30721 Simpson Rd. • Abbotsford, BC V2T 6Y7 Canada  
P: 604-575-8220  
burt@apexbe.com

## SECRETARY/TREASURER

**Julie Palmer**



Palmer is a senior associate of Wiss, Janney, Elstner Associates Inc., a global firm of engineers, architects, and materials scientists committed to helping clients solve, repair, and avoid problems in the built world. She has 21 years of experience working on building enclosure restoration and rehabilitation projects, with a specific focus on roofing. Palmer has been active with the IIBEC Delaware Valley Chapter for many years and served on the chapter board for five years.

### WISS, JANNEY, ELSTNER, ASSOCIATES INC.

601 Walnut St., Suite 875W • Philadelphia, PA 19106  
P: 215-567-0703  
jmpalmer@wje.com

## IMMEDIATE PAST PRESIDENT

**Robért J. Hinojosa, F-IIBEC, RBEC, RRC, RWC, REWC, RRO, REWO, PE, CDT**



Hinojosa is the founder and chief executive officer of the firm RJH & Associates Inc., with six offices in the US and Canada, and is licensed in 40 states. He is a past Region II director, has sat on numerous committees, developed and taught many continuing education courses, has published articles in *IIBEC Interface*, is a past president of IIBEC, and is a fellow of IIBEC.

### RJH & ASSOCIATES INC.

12590 Emerald Coast Pkwy., Unit B • Miramar Beach, FL 32550  
P: 850-608-6221  
robert@rjhassoc.com

## EXECUTIVE VICE PRESIDENT AND CEO

**Brian T. Pallasch, CAE**



Pallasch joined the IIBEC staff team as executive vice president and chief executive officer in June 2019 after 20 years with the American Society of Civil Engineers (ASCE), most recently as managing director of government relations and infrastructure initiatives.

### IIBEC

434 Fayetteville St., Suite 2400 • Raleigh, NC 27601  
P: 919-859-0742  
bpallasch@iibec.org

# REGION DIRECTORS

## REGION I

### Norman Crouse, RRO



2025–2027

Crouse is a senior building envelope consultant at Dedicated Roof & Hydro-Solutions with 30 years of experience and a focus in restoration and rehabilitation. An IIBEC member since 2009, he has chaired the Advocacy, Educational, and the Philanthropic (Scholarship Awards) Committees for the IIBEC Mid-Atlantic Chapter. He was a chapter board member from 2019 to 2023 and served as chapter president in 2022. Crouse has also served on the IIBEC Technical Advisory Committee, Chapter Development Committee, and Advocacy Committee.

#### DEDICATED ROOF AND HYDRO-SOLUTIONS LLC

932 Seneca Park Rd. • Middle River, MD 21220  
P: 443-257-1612  
ncrouse@drhroofsolutions.com

## REGION II

### Nicholas Tribble, RRO



2023–2025 | 2025–2027

Tribble is a building enclosure consultant and director of business development at New Atlantic. He joined IIBEC in 2017. He is a Registered Roofing Observer (RRO) and has served on the board of the IIBEC Carolinas Chapter since 2018, including in the role of president for multiple years. In 2019, Tribble began working with the RCI-IIBEC Foundation to mentor students yearly at the IIBEC International Convention and Trade Show. He also is an IIBEC presenter for its “Roof Technology and Science,” “Exterior Wall Technology and Science,” and “Waterproofing” courses.

#### NEW ATLANTIC

2635 Reynolda Rd. • Winston Salem, NC 27106  
P: 336-339-3740  
ntribble@new-atlantic.net

## REGION III

### Charles T. Sietmann, RRC, RRO, REWO, CCCA, CIT



2023–2025 | 2025–2027

Sietmann is principal of building enclosures with Building Technology Consultants Inc. He has over 20 years' experience assisting in the evaluation, analysis, repair, and rehabilitation of existing building facades, windows, roofing, and waterproofing systems. He is a past president of the IIBEC Chicago Area Chapter, and previously served on the IIBEC Document Competition Subcommittee and the IIBEC Building Enclosure Symposia Committee.

#### BUILDING TECHNOLOGY CONSULTANTS INC.

1845 East Rand Rd., Suite L100 • Arlington Heights, IL 60004  
P: 847-454-8800  
csietmann@btc.expert

## REGION IV

### Jon Cannon, RRC, REWC, RRO, REWO, CDT



2022–2024 | 2024–2026

Cannon is a principal at Hollon+Cannon Group LLC, which he cofounded. He is a founding member of the IIBEC Central Texas Chapter, having served twice as chapter president. He has served three terms as chair of the IIBEC Chapter Development Committee and continues to be involved with the development and success of IIBEC affiliated chapters.

#### HOLLON+CANNON GROUP LLC

11800 Highland Oaks Trl. • Austin, TX 78759  
P: 512-809-7650  
jcannon@hollon-cannon.com



## REGION V

### Julie McDonald, RRC, REWC



2022–2024 | 2024–2026

McDonald is the director of design for Mantis Innovations, headquartered in Greenwood Village, Colorado. She has been in the roof and building enclosure consulting industry for 16 years and commercial construction for 19 years. She has served on the executive committees of the IIBEC Mid-Atlantic Chapter and the IIBEC Colorado Chapter, and has been an active member of the IIBEC Emerging Professionals Committee. In 2019 she received the IIBEC Emerging Professionals Award of Excellence for her leadership within IIBEC.

#### SMITH SECKMAN REID

1466 Nemrick Place • Castle Rock, CO 80109.  
P: 413-896-7123  
juliemcdonald324@gmail.com

## REGION VI

### Jon Solland, RRC, RWC, RRO



2024–2026

Solland is a project engineer at RJC Engineers. He focuses on supporting large clients with prime consulting, effective envelope and structural design, and proactive asset management. He is an active leader in the industry, IIBEC Canadian Prairies Chapter, and ABEC.

#### RJC ENGINEERS

1816 Crowchild Trail NW, Suite 200 • Calgary AB T2M 3Y7  
P: 403-338-5854  
jon.solland@rjc.ca

## REGION VII

### Stephanie M. Robinson, BASc, PEng



2023–2025 | 2025–2027

Robinson is the director of Eastern Canada Building Sciences for WSP Canada Inc. Based in Ottawa, Ontario, she has over 17 years' experience in Canada and the United States. She is a founding member and past president of the IIBEC Quebec Ontario Chapter and past National Capital Branch liaison for the IIBEC Southern Ontario Chapter. She has sat on various committees and task forces since 2018, including the Manual of Practice Task Force and BES Committee.

#### WSP CANADA INC.

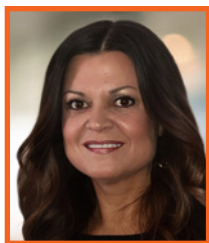
2611 Queensview Dr., Suite 300 • Ottawa, ON K2B 8K2 Canada  
P: 613-690-3888  
stephanie.robinson@wsp.com



# IIBEC STAFF



**Brian Pallasch, CAE**  
EXECUTIVE VICE  
PRESIDENT AND CEO



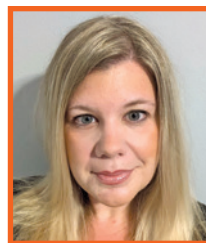
**Melany Rizzo, CAE**  
CHIEF OPERATING  
OFFICER



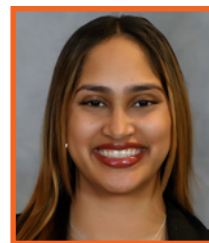
**Heidi Arsenault**  
MANAGER OF  
CREDENTIALS



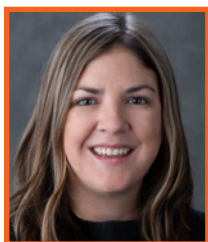
**Carolyn Baber, SHRM-CP**  
MANAGER OF HUMAN  
RESOURCES &  
BOARD OPERATIONS



**Mandy Bell**  
MANAGER OF EDUCATION



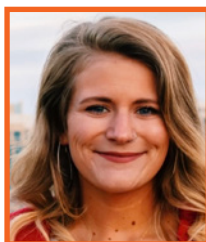
**Tiffany Camperos-Brizuela**  
CREDENTIALS SPECIALIST,  
ONBOARDING &  
RENEWALS



**Arissa Cooper**  
DIRECTOR OF MARKETING  
& SALES



**Tara Cottle**  
DIRECTOR OF CHAPTER  
RELATIONS & WEBSITE  
CONTENT



**Caroline Cummings**  
MEETING & EVENTS  
SPECIALIST



**Rick Gardner**  
FOUNDATIONS  
DEVELOPMENT OFFICER



**Christian Hamaker**  
DIRECTOR OF PUBLICATIONS &  
COMMUNICATIONS



**Mendy Howard**  
DIRECTOR OF EVENTS &  
MEETINGS



**Samir Ibrahim, F-IIBEC, AIA**  
EDUCATION ADVISOR



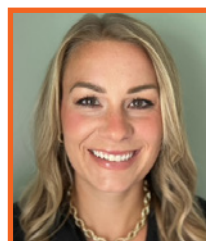
**Alec Jeffries**  
VICE PRESIDENT  
OF MEMBERSHIP &  
CREDENTIALS



**Kristen Kennedy**  
DIRECTOR OF EDUCATION



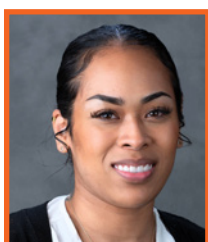
**Laura Kury**  
OPERATIONS SPECIALIST



**Amanda Littlejohn**  
MEMBERSHIP  
DEVELOPMENT  
SPECIALIST



**Emily Lorenz, PE**  
CODES & STANDARDS  
ADVISOR



**Simone Patterson**  
CREDENTIALS SPECIALIST,  
APPLICATIONS



# COMMITTEES

## ADVOCACY

Influence and defend public policy interests of IIBEC consultant members in the building enclosure industry while creating strategic alliances with common goals to advance and protect public policy.

**Chair:** Melissa Barrows-Lieb, RRC, RRO, CCCA, CDT. **Email:** mlieb@macbrady.com. **Staff liaison:** Brian Pallasch. **Email:** bpallasch@iibec.org.

## ANNUAL CONVENTION

Oversee the development of the educational program and recommendations related to the annual convention. **Chair:** Burt Carver, RRC, RRO. **Email:** burt@apexbe.com. **Vice Chair:** Julie Palmer. **Email:** jmpalmer@wje.com. **Staff liaisons:** Mandy Bell, Mendy Howard, and Kristen Kennedy. **Emails:** abell@iibec.org, mhoward@iibec.org, and kkennedy@iibec.org.

## AWARDS

Oversee the IIBEC awards selection process, submitting final approval or disapproval based on established criteria for each award. **Chair:** Rob  rt J. Hinojosa, F-IIBEC, RBEC, RRC, RWC, REWC, RRO, REWO, PE, CDT. **Email:** robert@rjhassoc.com. **Staff liaison:** Carolyn Baber. **Email:** cbaber@iibec.org.

## HOROWITZ AWARD

Judges the annual Richard M. Horowitz Award. **Chair:** John Wylie, RBEC, RWC, REWC, RRC, RRO, PE. **Email:** johnwylie@constructionscience.org. **Staff liaison:** Christian Hamaker. **Email:** chamaker@iibec.org.

## BUILDING ENCLOSURE SYMPOSIUM

Oversee the development of the symposium educational program and recommend association policy to the IIBEC Board of Directors on matters related to the association's symposium. **Co-Chair:** Jay Rodriguez. **Email:** jay@marketmakersinc.com. **Co-Chair:** Michel Paulin, RBEC, RRC, RWC, REWC, RRO, REWO. **Email:** michel@fsaeng.com. **Staff liaisons:** Mandy Bell, Mendy Howard, and Kristen Kennedy. **Emails:** abell@iibec.org, mhoward@iibec.org, and kkennedy@iibec.org.

## BYLAWS

Recommend to the IIBEC Board of Directors association policy on matters relating to the association's bylaws. Maintain model bylaws for use and adaptation of IIBEC Chapters. **Chair:** Marc Caputo, F-IIBEC, RRC, LEED AP. **Email:** marcrrc@aol.com. **Staff liaisons:** Brian Pallasch and Melany Rizzo. **Emails:** bpallasch@iibec.org and mrizzo@iibec.org.

## CHAPTER DEVELOPMENT

Facilitate IIBEC Chapter success through the creation and maintenance of chapter leadership resources. **Chair:** Steve Drennan. **Email:** steve.drennan@premierbec.com. **Staff liaison:** Tara Cottle. **Email:** tcottle@iibec.org.

## CODES AND STANDARDS

Lead and advocate the building enclosure industry's contribution to developing a safe and sustainable built environment through cooperation with and influence over other organizations in the development, preparation, and adoption of codes and standards. **Chair:** Dave Hawn, F-IIBEC, RRC, CEM. **Email:** drhawn@drhroofsolutions.com. **Staff liaison:** Emily Lorenz, PE. **Email:** elorenz@iibec.org.

Committees continued on next page



# COMMITTEES CONTINUED

## CREDENTIALS

Recommend to the Board of Directors policy on matters relating to IIBEC's professional Credentials programs, particularly policies related to candidate applications, examination development, and administration. **Chair:** David Honeycutt, RBEC, RRC, RWC, REWC, RRO. **Email:** dhoneycutt@reiengineers.com. **Staff liaison:** Alec Jeffries. **Email:** ajeffries@iibec.org.

### REWC® EXAM DEVELOPMENT

Recommend association policy to the Credentials Committee on matters related to the content of the association's REWC Credentials examination. **Chair:** Stephen Hentz, RBEC, RRC, RWC, REWC, CBECxP, REWO, PE, CDT. **Email:** shentz@reiengineers.com. **Staff liaison:** Alec Jeffries. **Email:** ajeffries@iibec.org.

### REWO® EXAM DEVELOPMENT

Recommend association policy to the Credentials Committee on matters related to the content of the association's REWO Credentials examination. **Chair:** Stephen Hentz, RBEC, RRC, RWC, REWC, CBECxP, REWO, PE, CDT. **Email:** shentz@reiengineers.com. **Staff liaison:** Alec Jeffries. **Email:** ajeffries@iibec.org.

### RRC® EXAM DEVELOPMENT

Recommend association policy to the Credentials Committee on matters related to the content of the association's RRC Credentials examination. **Chair:** Marc Caputo, RRC, LEED AP. **Email:** marcrrc@aol.com. **Staff liaison:** Alec Jeffries. **Email:** ajeffries@iibec.org.

### RRO® EXAM DEVELOPMENT

Recommend association policy to the Credentials Committee on matters related to the content of the association's RRO Credentials examination. **Chair:** Codee Goff, RRC, RRO, REWO. **Email:** codeeg@thebeegroup.org. **Staff liaison:** Alec Jeffries. **Email:** ajeffries@iibec.org.

### RWC® EXAM DEVELOPMENT

Recommend association policy to the Credentials Committee on matters related to the content of the association's RWC Credentials examination. **Chair:** Aaron Nelson, RBEC, RRC, RWC, REWC, RRO. **Email:** aaronnelson@roofingtechnical.com. **Staff liaison:** Alec Jeffries. **Email:** ajeffries@iibec.org.

## DIVERSITY AND INCLUSION

Champion diversity and inclusion issues in the building enclosure industry. **Chair:** André Coppin, RRC, RRO. **Email:** acoppin@cornerstonearch.com. **Staff liaisons:** Carolyn Baber and Brian Pallasch. **Emails:** cbaber@iibec.org and bpallasch@iibec.org.

## EDUCATION

Provide recommendations to the Board of Directors on matters related to IIBEC educational programs. Members participate in the development, technical review, and needs assessment for educational programs related to roofing, waterproofing, exterior walls, building commissioning and other identified topics. **Chair:** Aaron Nelson, RBEC, RRC, RWC, REWC, RRO. **Email:** aaron@roofingtechnical.com. **Vice Chair:** Amy Peevey, F-IIBEC, REWC, RRO, PE, CDT. **Email:** apeevey@secretariat-intl.com. **Staff liaisons:** Mandy Bell and Kristen Kennedy. **Emails:** abell@iibec.org and kkennedy@iibec.org.

## EMERGING PROFESSIONALS

Recommend to the IIBEC Board of Directors programs and services for members within ten years of entering the roofing, waterproofing, exterior wall and building enclosure commissioning consulting profession or collegiate students in a field of study related to architectural, engineering, or construction science. **Chair:** Anthony Dukes, RRC, RRO, PE. **Email:** adukes@wje.com. **Staff liaison:** Tara Cottle. **Email:** tcottle@iibec.org.

## ETHICS

Maintain the IIBEC Code of Ethics and interpret its application to the members of IIBEC, as required by the Board of Directors. **Chair:** Jean-Guy Levaque, F-IIBEC, RRC, RRO. **Email:** jean-guy.levaque@pretiumeng.com. **Staff liaisons:** Brian Pallasch and Melany Rizzo. **Emails:** bpallasch@iibec.org and mrizzo@iibec.org.



## EXCELLENCE IN BUILDING ENCLOSURE CONSULTING (EBEC) AWARD

Read, judge, and discuss entries for the award each year. Recommend to the Board of Directors policy on matters related to IIBEC's EBEC Award awarded at the annual convention. **Chair:** Wayne Korte. **Email:** wayne.korte@4sci.com. **Staff liaison:** Emily Lorenz. **Email:** elorenz@iibec.org.

## IIBEC INTERFACE EDITORIAL BOARD

Connect the elements of the building enclosure industry by educating and informing its readers about related topics, establishing a common ground for discussion, promoting IIBEC programs, and reaching out to the industry at large. The IIBEC Interface Editorial Board is meant to assist in coordinating the publication of IIBEC Interface by reviewing, soliciting, and procuring articles and information for inclusion in the journal. It shall also recommend editorial policy to the IIBEC Board of Directors when appropriate. **Chair:** John Wylie, RBEC, RRC, RWC, REWC, RRO, PE. **Email:** jwylie@reiengineers.com. **Staff liaison:** Christian Hamaker. **Email:** chamaker@iibec.org.

## INDUSTRY LIAISON

Provide industry, facility management, and associate members a forum to enhance the body of knowledge and provide input to IIBEC regarding trends, issues, and concerns in the building enclosure industry. **Chair:** Janial Mack, RRO. **Email:** janial.mack@carlisleccm.com. **Staff liaison:** Brian Pallasch. **Email:** bpallasch@iibec.org.

## NOMINATING

Facilitate fair and effective elections for the positions of IIBEC Region Directors and IIBEC Officers. **Chair:** Michael Clark, F-IIBEC, RBEC, RRC, RWC, REWC, RRO, PE, CSRP. **Email:** mecanda@mgacoxmail.com. **Staff liaisons:** Carolyn Baber and Brian Pallasch. **Emails:** cbaber@iibec.org and bpallasch@iibec.org.

## TECHNICAL ACTIVITIES

Respond to technical issues related to the building enclosure industry. Develop advisories and policy statements for the building enclosure industry for approval by the IIBEC Board of Directors. **Chair:** Kenrick J. Hartman, RBEC, PE, LEED AP BD+C. **Email:** khartman@wje.com. **Staff liaison:** Emily Lorenz. **Email:** elorenz@iibec.org.



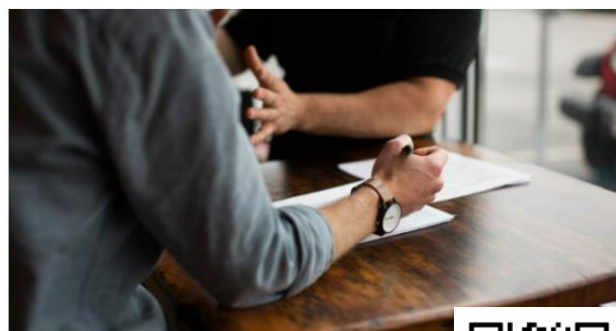
MARKETPLACE CALENDAR NEWS AND PRESS MEMBER DIRECTORY IIBEC PROFILE LOGIN Q

Membership ▼ Credentials ▼ Education & Events ▼ Communications ▼ Advocacy ▼ About ▼ Join IIBEC

## Committees

IIBEC committees recommend policy to the board of directors.

These member-powered groups offer opportunities for individuals to actively shape the direction of the association and its involvement within the building enclosure industry. Get involved. Discover a place with one of IIBEC's many committees below.



For more information about IIBEC committees, visit  
[iibec.org/membership/committees](https://iibec.org/membership/committees)



# IIBEC REGIONS & CHAPTERS



## REGION VII

Southern Ontario Chapter  
Maritime Branch  
Quebec Ontario Chapter

## REGION I

Delaware Valley Chapter  
Metro NY-Chapter  
Mid-Atlantic Chapter  
New England Chapter  
Ohio Valley Chapter

## REGION VI

Canadian Prairies Chapter  
Western Canada Chapter

## REGION V

Arizona Chapter  
Colorado Chapter  
Northern California Chapter  
Portland Chapter  
Puget Sound Chapter  
Southern California Chapter

## REGION IV

Central Texas Chapter  
Gulf Coast Chapter  
Mexico City Branch  
Louisiana Branch  
North Texas Chapter

## REGION III

Chicago Area Chapter  
Central States Branch  
Great Lakes Chapter  
Minnesota Branch  
West Michigan Chapter  
Wisconsin Chapter

## REGION II

Carolinas Chapter  
Florida Chapter  
Georgia Chapter  
Mid-South Chapter  
Virginia Chapter

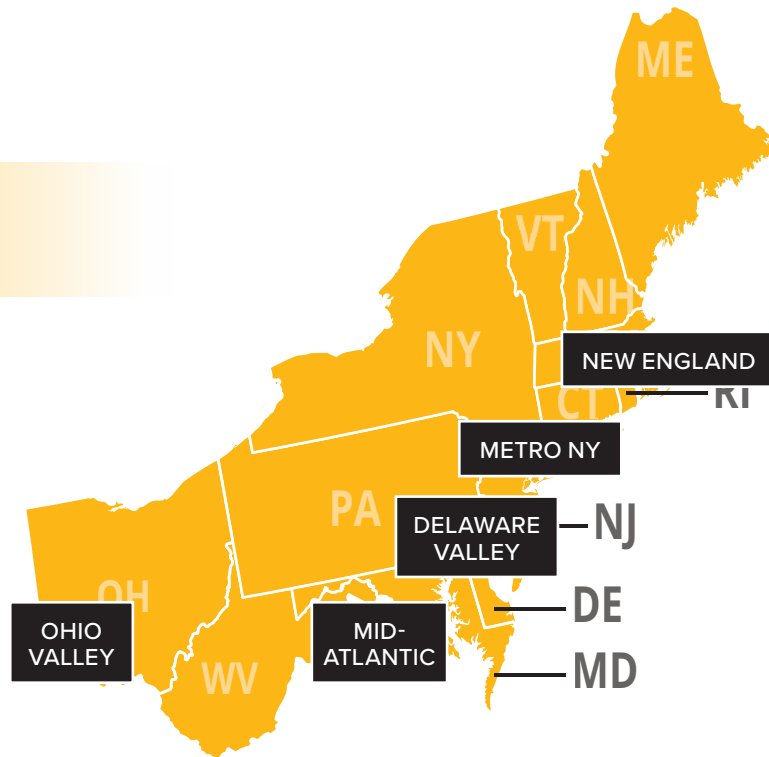
Learn More about IIBEC  
Regions and Chapters



# IIBEC-AFFILIATED CHAPTERS



## REGION I



### REGION I DIRECTOR

Norm Crouse, RRO  
ncrouse@drhroofsolutions.com

### DELAWARE VALLEY CHAPTER

**Pres.:** Sam Zartman  
**V-P:** Michael Popeck, RRC, REWC  
**Treas:** Kathryn Stairs  
**Sect.:** Erik Villari  
**Contact Info:**  
Sam Zartman  
szartman@wje.com  
delawarevalley.iibec.org

### METRO NY CHAPTER

**Pres.:** Hugo Ramirez, LEED  
**V-P:** Corey Glaser, RA  
**Treas.:** Mike Lopez, RA  
**Sect.:** Kelly Greenfield, AIA, LEED AP, WELL AP  
**Contact Info:**  
Hugo Ramirez, LEED  
hugo@adlerwindows.com  
metronewyork.iibec.org

### MID-ATLANTIC CHAPTER

**Pres.:** Justin Long, RBEC, PE  
**V-P:** Anthony Dukes, RRC, RRO, PE  
**Treas.:** Bonnie Hoppa  
**Sect.:** Sierra Stewart, PE  
**Contact Info:**  
Justin Long, RBEC, PE  
justinl@skaengineers.com  
mid-atlantic.iibec.org

### NEW ENGLAND CHAPTER

**Pres.:** John Karman  
**V-P:** Kennie Thompson  
**Treas.:** Bill Waterston, F-IIBEC, RRC, RA  
**Sect.:** Christian Gorry, RRC, RRO, PE  
**Contact Info:**  
John Karman  
johnkarman620@gmail.com  
newengland.iibec.org

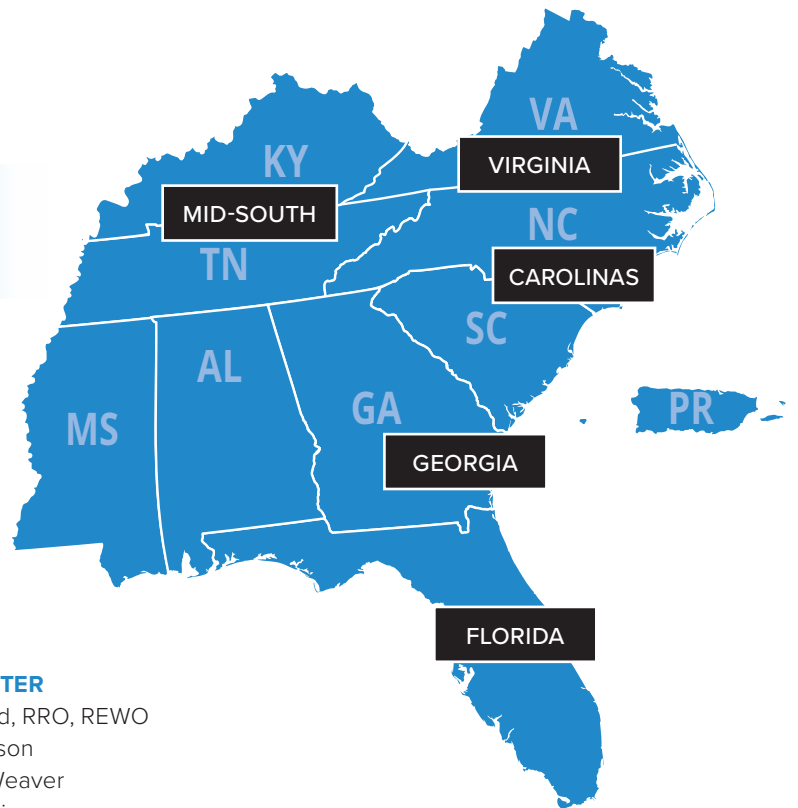
### OHIO VALLEY CHAPTER

**Pres.:** Nick Ridgeway, RRO  
**V-P:** Tim McParland  
**Sec.:** Brian Stewart  
**Treasurer:** Denise Diestel  
c/o IIBEC Ohio Valley Chapter  
(Administrator: Michaela Graham)  
ohiovalleychapteriibec@gmail.com  
ohiovalley.iibec.org

# IIBEC-AFFILIATED CHAPTERS



## REGION II



### REGION II DIRECTOR

Nicholas Tribble, RRO  
[ntribble@new-atlantic.net](mailto:ntribble@new-atlantic.net)

### CAROLINAS CHAPTER

**Pres.:** Keith Parker, III, RBEC, RRC, RWC, REWC, CBECxP, RRO, CCS, CCCA  
**V-P:** Codee Goff, RRC, RRO, REWO  
**Treas.:** Hannah Safren, RRO  
**Sect.:** John Wylie, RBEC, RWC, REWC, RRC, RRO, PE  
**Contact Info:**  
Keith Parker, III, RBEC, RRC, RWC, REWC, CBECxP, RRO, CCS, CCCA  
[kparker@reiengineers.com](mailto:kparker@reiengineers.com)  
[carolinas.iibec.org](http://carolinas.iibec.org)

### FLORIDA CHAPTER

**Pres.:** Howard Piper  
**V-P:** Frank Louis-Jeune, RRO  
**Treas.:** Jeff Carrillo, RRO  
**Sect.:** Robert DeHaan, RRO  
**Contact Info:**  
Howard Piper  
[hpiper@pbadesigngroup.com](mailto:hpiper@pbadesigngroup.com)  
[florida.iibec.org](http://florida.iibec.org)

### GEORGIA CHAPTER

**Pres.:** Pierce Ward, RRO, REWO  
**V-P:** James Johnson  
**Treas.:** Thomas Weaver  
**Sect.:** Victor Martin  
**Contact Info:**  
Pierce Ward, RRO, REWO  
[pward@apwardconsulting.com](mailto:pward@apwardconsulting.com)  
[georgia.iibec.org](http://georgia.iibec.org)

### MID-SOUTH CHAPTER

**Pres.:** Nick Warndorf, RRO  
**V-P:** Joshua Hankins, RRO  
**Treas.:** Brian Davis, RRO  
**Sect.:** Brian Lauderdale, RRC, RRO  
**Contact Info:**  
Nick Warndorf, RRO  
[nick@warndorfgroup.com](mailto:nick@warndorfgroup.com)  
[mid-south.iibec.org](http://mid-south.iibec.org)

### VIRGINIA CHAPTER

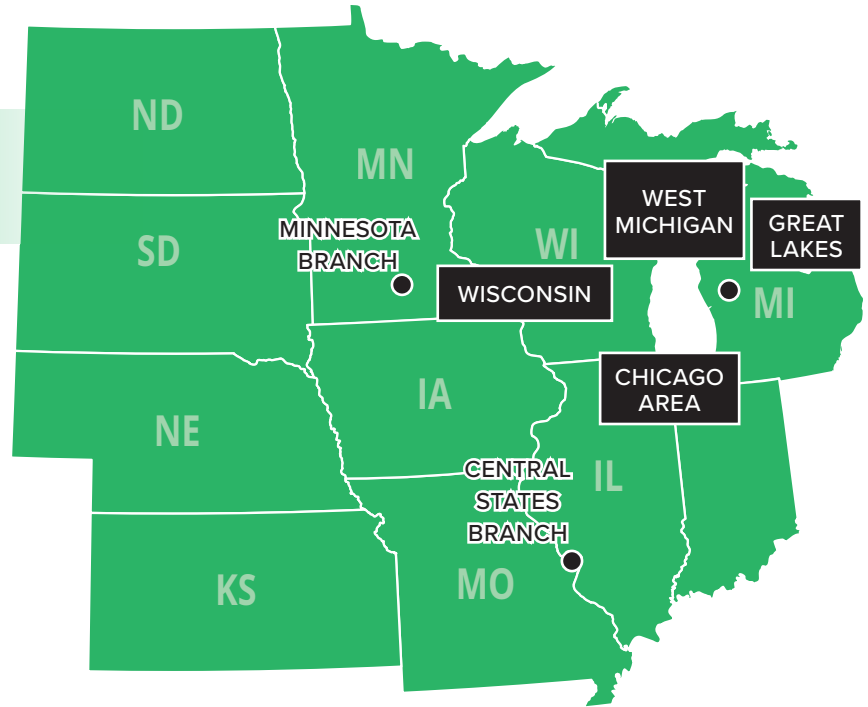
**Pres.:** Kirk Stanford  
**V-P:** Rob Moore, Jr., RRO  
**Treas.:** April McKelvey, RRC, RRO  
**Sect.:** Elizabeth Grant, PhD, RA  
**Contact Info:**  
c/o Kirk Stanford  
[kastanford@skaeng.com](mailto:kastanford@skaeng.com)  
[virginia.iibec.org](http://virginia.iibec.org)



# IIBEC-AFFILIATED CHAPTERS



## REGION III



### REGION III DIRECTOR

Charles T. Sietmann, RRC, RRO,  
REWO, CCCA, CIT  
[csietmann@btc.expert](mailto:csietmann@btc.expert)

### CHICAGO AREA CHAPTER

**Pres.:** Jacob Arnold, CDT  
**V-P:** Andy Barriento, RRO  
**Treas.:** Ryan Schultz  
**Sect.:** Violet Spiwak, RA  
**Contact Info:**  
Jacob Arnold, CDT  
[info@chicagoarea.iibec.org](mailto:info@chicagoarea.iibec.org)  
[chicagoarea.iibec.org](http://chicagoarea.iibec.org)

### Minnesota Branch

**Liaison:** Sean Fee  
[sfee@forensicbuildingscience.com](mailto:sfee@forensicbuildingscience.com)

### Central States Branch

**Liaison:** Cale Prokopf, RRO, REWO  
[cprokopf@rooftechconsulting.com](mailto:cprokopf@rooftechconsulting.com)

### GREAT LAKES CHAPTER

**Pres.:** Justin Osborne, RRO  
**V-P:** Nick Baisden  
**Treas.:** Joe Sobas, RRC, RRO  
**Sect.:** Jeff Scott, RRC, RRO, CCS  
**Contact Info:**  
Justin Osborne, RRO  
[osbornejd@mwacrs.com](mailto:osbornejd@mwacrs.com)  
[iibecgreatlakes.org](http://iibecgreatlakes.org)

### WEST MICHIGAN CHAPTER

**Pres.:** Elise Love, RRC  
**V-P:** Cody Shelner  
**Sect:** Jessica Thiebout, REWC, PA  
**Treas:** Brent DeRose, RRC, RRO, PE  
**Contact Info:**  
Elise Love, RRC  
[emlove@rrj.com](mailto:emlove@rrj.com)  
[westmichigan.iibec.org](http://westmichigan.iibec.org)

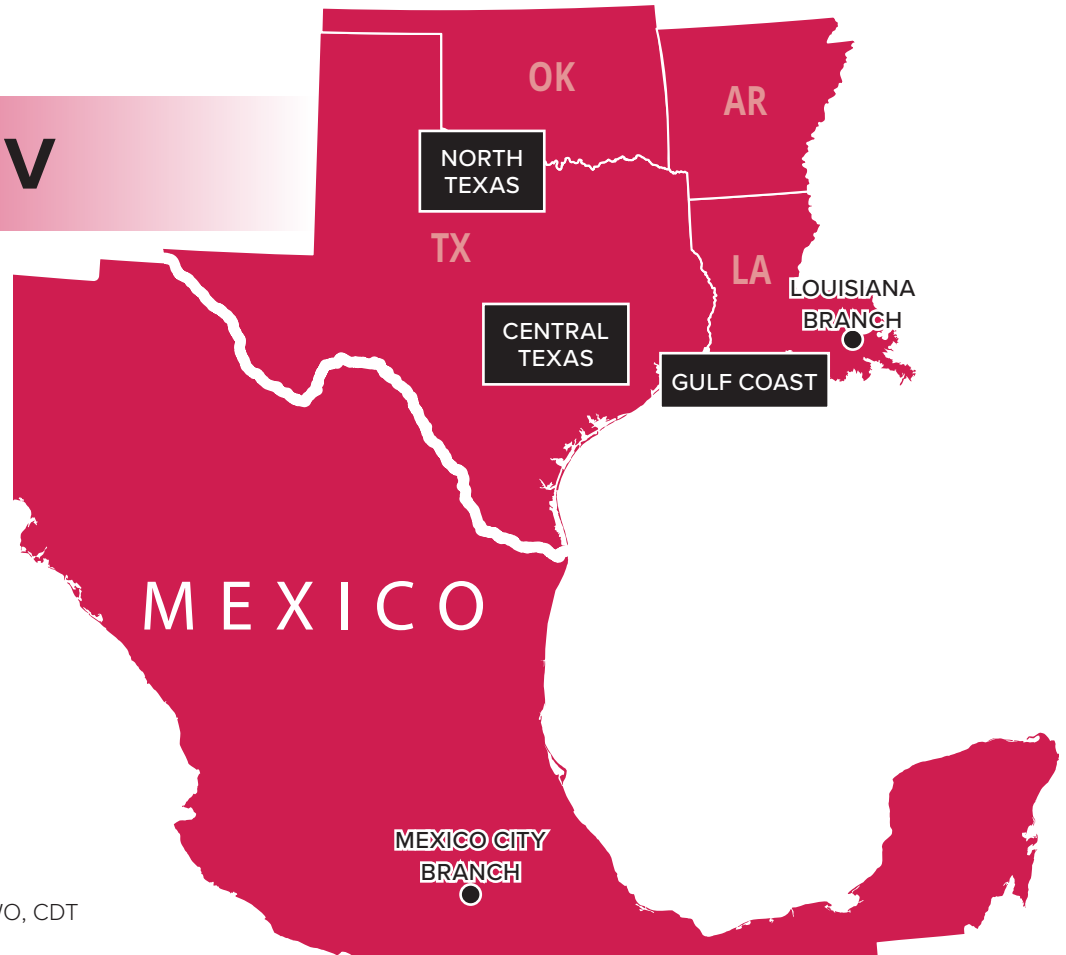
### WISCONSIN CHAPTER

**Pres.:** Arlo Gough, Jr., RRC, PE  
**V-P:** Mitch Hansen,  
**Sect/Treas.:** David Johnson  
**Contact Info:**  
Arlo Gough, RRC, PE  
[agough@nederveld.com](mailto:agough@nederveld.com)  
[wisconsin.iibec.org](http://wisconsin.iibec.org)

# IIBEC-AFFILIATED CHAPTERS



## REGION IV



### REGION IV DIRECTOR

Jon Cannon, RRC, REWC, RRO, REWO, CDT  
[jcannon@hollon-cannon.com](mailto:jcannon@hollon-cannon.com)

### CENTRAL TEXAS CHAPTER

**Pres:** Seth Tanner, RRC, RRO  
**V-P:** Bob Kuhn, CCS, CCCA  
**Treas.:** Melannie Ruiz Moreno  
**Sect.:** Kayla Maines  
**Contact Info:**  
Seth Tanner, RRC, RRO  
[stanner@forensixconsulting.com](mailto:stanner@forensixconsulting.com)  
[centraltexas.iibec.org](http://centraltexas.iibec.org)

### GULF COAST CHAPTER

**Pres:** Georgette Avery  
**V-P:** Timothy Clepper, RRC, RRO  
**Treas.:** Graciela Rodriguez  
**Sect.:** Dean Torres  
**Contact Info:**  
Georgette Avery  
Houston, TX 77010  
[renmc54@gmail.com](mailto:renmc54@gmail.com)  
[www.gulfcoast.iibec.org](http://www.gulfcoast.iibec.org)

### NORTH TEXAS CHAPTER

**Pres.:** Benjamin Scales, RRC, RRO  
**V-P:** Blaine Sibby  
**Treas.:** Mallory Buckley, RRO, PE  
**Sect.:** Danielle Begley  
**Contact Info:**  
Benjamin Scales, RRC, RRO  
[bscales@z6consulting.com](mailto:bscales@z6consulting.com)  
[ntcrcl.com](http://ntcrcl.com)

### Mexico City Branch (Mexico)

**Liaison:** Alejandrina Galicia  
[agalicia@buildingdx.com](mailto:agalicia@buildingdx.com)

### Louisiana Branch

**Liaison:** Michael Schultz, RRO  
[mike@roofmanagementsolutions.com](mailto:mike@roofmanagementsolutions.com)

# IIBEC-AFFILIATED CHAPTERS



## REGION V

### REGION V DIRECTOR

Julie E. McDonald, RRC, REWC  
jmcDonald@ssr-inc.com

### ARIZONA CHAPTER

**Pres:** Bryan Hill, RRO, RRC  
**V-P:** Pete Keener, RRC, RRO, CIT  
**Treas:** Julie Hill  
**Sect.:** Walt Hitchcock  
**Contact Info:**  
Pres: Bryan Hill, RRO, RRC  
P: (602) 531-9626  
bryan@wrecorp.com  
arizona.iibec.org

### COLORADO CHAPTER

**Pres.:** Lauren Morley  
**V-P:** Matt Braun  
**Treas.:** Dan Cupit  
**Sect.:** Mike Borgelt  
(Administrator: Bianca Pozzi)  
**Contact Info:**  
Lauren Morley  
lauren@r3ng.com  
colorado.iibec.org

### NORTHERN CALIFORNIA CHAPTER

**Pres:** Joseph Buccini  
**V-P:** Bill Gillette  
**Treas:** David Markman  
**Sect:** Maxwell Calehuff  
**Contact Info:**  
Joseph Buccini  
jbuccini@wje.com  
northerncalifornia.iibec.org

### PORTLAND CHAPTER

**Pres.:** Liz Morris, CDT, GRP  
**V-P:** Caleb Ewing  
**Sect.:** Kurt Hodges, RRO  
**Treas.:** Delvecchio Gray, RRC, RRO  
**Contact Info:**  
Liz Morris, CDT, GRP  
morris@greenuproofing.com  
portland.iibec.org

### PUGET SOUND CHAPTER

**Pres.:** Elizabeth Nicholson  
**V-P:** TJ Becerra, RRO  
**Sect/Treas.:** Ryan Longwill, RRC, RRO  
**Contact Info:**  
Elizabeth Nicholson  
enicholson1221@gmail.com  
pugetsound.iibec.org

### SOUTHERN CALIFORNIA CHAPTER

**Pres.:** Missy McLain  
**V-P:** Jeremy Roberts, RRO  
**Treas.:** Joseph Schettino  
**Sect.:** Sean Connolly, RBEC,  
RRC, REWC, RWC, RA  
**Contact Info:**  
Missy McLain  
mmclain@soprema.us  
southerncalifornia.iibec.org



# IIBEC-AFFILIATED CHAPTERS



## REGION VI

### REGION VI DIRECTOR

Jon Solland, RRC, RWC, RRO  
jon.solland.@rjc.ca

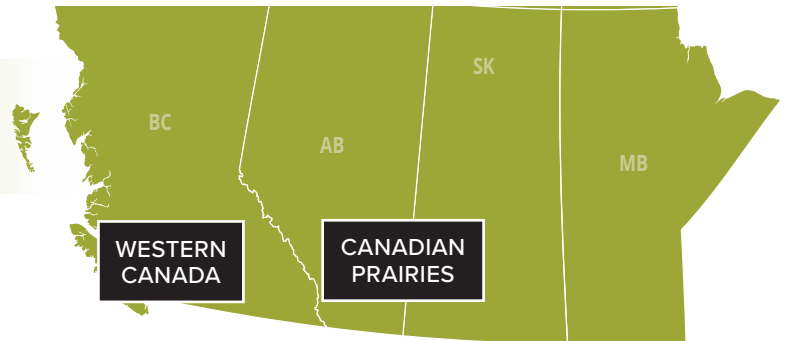
### CANADIAN PRAIRIES CHAPTER

**Pres.:** Christine Baxter, RRO  
**V-P:** Jon Peat, RRC, RRO  
**Treas.:** Trevor Sziva, RRO  
**Sect.:** Stephen Epp, RRO  
**Contact Info:**  
Christine Baxter, RRO  
christine@baxterroofconsulting.ca  
candianprairies.iibec.org

### WESTERN CANADA CHAPTER

**Pres.:** Brian Boomars, PEng  
**V-P:** David Taguchi, RRO  
**Sect./Treas.:** Sean Campbell, RRO  
**Contact Info:**  
IIBEC Western Canada Chapter  
(Molly Shipowich, Executive Administrator)

P.O. Box 19113  
1153 56th Street  
Delta, BC V4L 2P8  
CANADA  
iibecwcc@telus.net  
westerncanada.iibec.org



## REGION VII

### REGION VII DIRECTOR

Stephanie M. Robinson, BASc, PEng  
stephanie.robinson@wsp.com

### QUEBEC ONTARIO CHAPTER

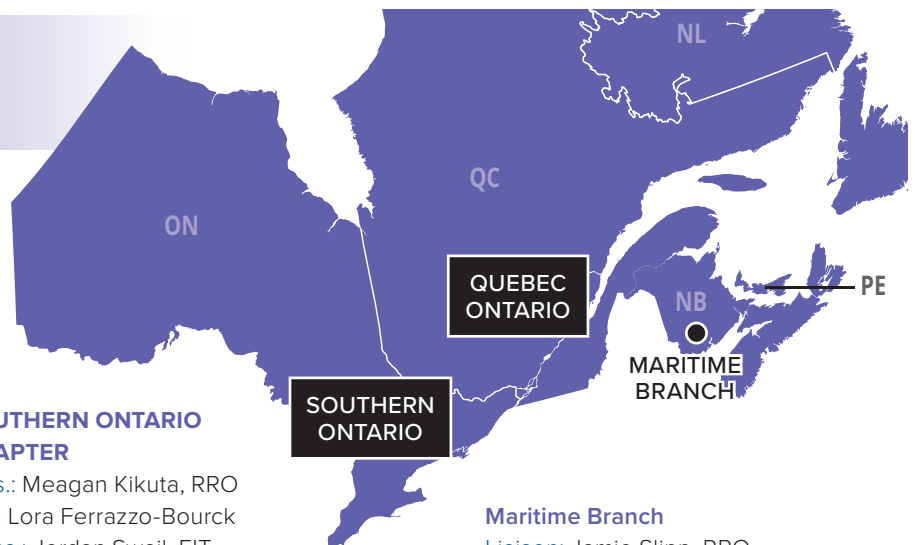
**Pres:** Troy Ferreira, RRO  
**V-P:** Sebastien Joly  
**Treas/Sect.:** Preston Seaward, RRO  
**Contact Info:**  
IIBEC Quebec Ontario Chapter  
(Administrator: Christine Kebezès)  
70 Leek Crescent  
Richmond Hill, Ontario L4B 1H1  
CANADA  
ckebezès@tcaconnect.com  
quebecontario.iibec.org

### SOUTHERN ONTARIO CHAPTER

**Pres.:** Meagan Kikuta, RRO  
**V-P:** Lora Ferrazzo-Bourck  
**Treas.:** Jordan Swail, EIT  
**Sect.:** John Mills, RRO, GRP  
**Contact Info:**  
IIBEC Southern Ontario Chapter  
(Administrator: Christine Kebezès)  
70 Leek Crescent  
Richmond Hill, Ontario L4B 1H1  
CANADA  
ckebezès@tcaconnect.com  
southernontario.iibec.org

### Maritime Branch

**Liaison:** Jamie Slipp, RRO  
jjslipp@nbrca.ca







**WHITCO**  
ROOFING, INC.

# YOUR ROOF, OUR EXPERTISE

Reliable execution. Clear reporting. Smart solutions. Whitco is the roofing partner trusted to deliver on complex projects with precision, transparency, and care—*nationwide*.



[whitcoroofing.com](http://whitcoroofing.com) | 1-888-399-2221

# ADVOCACY



## ADVOCACY AND GOVERNMENT RELATIONS

IIBEC's strategic plan is the cornerstone on which the government relations program is built:

- Increase involvement in the development of codes and standards to promote requirements needed to ensure the safety, resilience, and sustainability of building enclosure systems.
- Increase advocacy efforts to influence procurement issues to protect the integrity and transparency of taxpayer funded projects.
- Increase engagement with outside organizations to promote legislative efforts.
- Increase efforts to promote IIBEC member credentials and services to government entities.
- Increase resources, tools, and training to chapters to engage in local, state, and provincial advocacy efforts.

Working through the IIBEC Advocacy Committee and with chapters and branches, IIBEC's advocacy efforts are driven by member interests.

## Supporting Building Enclosure Consultants Across North America:

**Our mission is to influence public policy, improve building performance standards, and ensure fair procurement practices for architectural and engineering (A/E) design professionals.**





## IIBEC ADVOCACY FOR CHAPTERS AND MEMBERS

As long as the government has a say over how buildings are constructed and by whom, IIBEC members must be involved to protect the interests of the profession.

Whether it is one person or an official committee, by harnessing the resources available from IIBEC, chapters can ensure our voice is heard when legislation and regulation impacting our profession is discussed. IIBEC will be a resource to the individual or chapter at every stage, from organizing and identifying key issues to helping write letters and meeting with elected officials to discuss important issues. IIBEC is committed to assisting its affiliated chapters in the ways noted below:

### SETTING UP AN ADVOCACY PROGRAM

IIBEC staff will work with chapter leaders to organize a chapter advocacy program and identify goals, strategies for engagement, and other programmatic functions to meet the chapter's needs.

### CHAPTER VISITS

IIBEC staff can attend in-person or virtual events and provide professional government affairs assistance upon request. IIBEC staff can speak about IIBEC policies and relevant legislative bills, provide a general overview, and even provide training for members.

### STATE & LOCAL LEGISLATIVE MONITORING

IIBEC monitors legislation at the state level that could impact members. From procurement legislation to changes in the building codes, IIBEC will alert chapters when our system catches legislation of interest.

### LETTER WRITING PROGRAM

Letters and electronic messages are an excellent way to communicate with and educate your elected representatives and regulators on issues impacting the building enclosure profession. IIBEC has experience drafting letters for use in advocacy efforts.

### HOSTING EVENTS WITH LEGISLATORS & REGULATORS

IIBEC can help identify, design, and invite key local officials to an event to discuss legislative or regulatory issues impacting the sector and educate them on the building enclosure profession.

### LOBBY DAYS/LEGISLATIVE VISITS

IIBEC can assist in organizing visits with your local officials, topics to cover, and best practices for communicating with elected officials and their staff. IIBEC can also help with drafting and preparation of statements if speaking or testifying before a legislative panel.

# CODE OF ETHICS

## INTERNATIONAL INSTITUTE OF BUILDING ENCLOSURE CONSULTANTS

Adopted July 17, 2001

Revised March 28, 2006, Revised September 19, 2015

Revised September 24, 2022

**Introduction:** The International Institute of Building Enclosure Consultants (IIBEC) is dedicated to the highest standards of professionalism, integrity, and competence. The standards contained in this Code of Ethics (Code) are statements of ethical principles by which the professional conduct and obligations of all IIBEC members and registrants shall be guided.

Under the IIBEC Bylaws, all IIBEC members and registrants are required to comply with the Code of Ethics and to report any observed violations. Adherence to this Code must be above reproach and beyond the influence of competing interests. Even the appearance of a conflict of interest shall be avoided.

The standards contained in this Code of Ethics are statements of ethical principles having broad applicability to members and registrants of IIBEC.

Members and registrants of IIBEC shall recognize that their profession and their practice may be governed by various laws (federal, state, provincial, local, or otherwise) and regulations regarding professional registration and the conduct of trade. It is their responsibility, therefore, to be familiar with those laws and regulations and to conduct themselves accordingly.

**Standard of Care Statement:** This Code is not intended to define the Standard of Care a member or registrant is required to meet and shall not be used as a reference or part of a civil action against a member or registrant.

**General Obligations:** Members and registrants shall maintain and further their knowledge of the profession in which they practice and shall maintain the utmost standard of professional judgment and conduct. Members and registrants shall conduct themselves and their practice honestly and impartially, serving with integrity the organization (IIBEC), other members, their clients, employers, and the public.

IIBEC does not tolerate harassment, discrimination, racism, violence, retaliation, and other disrespectful or inappropriate behavior. Members and registrants shall conduct themselves with integrity, in a professional manner and treat everyone with respect and dignity, including those with differences including but not limited to gender, gender identity, race, color, age, disability, sexual orientation, ethnic origin, veteran status, religion, or other legally protected characteristics.

IIBEC members and registrants are committed to diversity and inclusion and shall value and embrace diversity in the profession and participation in IIBEC programs and activities

### FUNDAMENTAL CANONS

Members and registrants of IIBEC, in the performance of their duties, shall:

1. Hold paramount the safety, health, and welfare of the public.
2. Conduct themselves in a professional and respectful manner and recognize the contributions of the project team engaged in consulting, design, and construction.
3. Value, and treat with respect and dignity all individuals, regardless of gender, gender identity, race, color, age, disability, sexual orientation, ethnic origin, veteran status, religion, or other legally protected characteristics.

### RULES OF PRACTICE

1. Safety, Health, and Welfare of Public Responsibilities:
  - a. Adhere to applicable laws and regulations.
  - b. When necessary, rely on the advice of other competent and qualified persons as to the intent and meaning of such applicable laws and regulations.
  - c. Be honest in conduct, and promote effective use of resources through transparent, and impartial service with fidelity to the public, employers, associates, and clients;
  - d. Approve and/or issue only those documents that they prepare or review and that are determined to be safe for public health and welfare, in conformity with accepted industry standards and applicable laws;
  - e. Neither offer to nor make payments or gifts to public officials, private clients, or industry representatives with the intent of influencing that person's judgment or decision in connection with an existing or prospective project in which the member/registrant is interested.
  - f. Do not mislead about the results that can be achieved through the use of the members' or registrants' services or products, nor shall the members or registrants state that they can achieve results by means that violate applicable laws;



- g. If a member's or registrant's judgment is overruled under circumstances that, in the opinion and best professional judgment of the member or registrant, may endanger life may cause substantial damage to property, or is not compliant with applicable laws and regulations, the member or registrant shall:
  - i. Advise an employer and/or client about the decision,
  - ii. Refuse to consent to the decision, and
  - iii. Notify the appropriate Authority Having Jurisdiction charged with the enforcement of the applicable laws or regulations.
- 2. Professional Responsibility:
  - a. Be respectful and considerate to others in obtaining work and employment, and while participating in IIBEC events;
  - b. Exercise unprejudiced and unbiased judgment and conduct when performing services;
  - c. Make accurate, truthful, and appropriate statements or claims about their qualifications, experiences, or performance;
  - d. Perform services in areas of professional and personal competence;
  - e. Undertake assignments only when qualified by education and experience in the specific technical fields involved;
  - f. Further knowledge of technical and non-technical capabilities including, but not limited to, the science, principles, and ethics of the profession and community;
  - g. Evaluate and decline activity or employment, financial or other interest, and refuse contribution if it reasonably appears that such involvement could compromise judgment and the best interests of the clients or employers. Provide full disclosure to the client or employer and obtain consent thereto;
  - h. Restrict the use of their names or firms nor associate in business ventures with persons or firms that they have reason to believe are engaged in fraudulent or dishonest business or professional practices.
  - i. Similar to statement c. above Engage only in accurate, appropriate, and truthful promotion of their practice;
  - j. Be objective and truthful in reports, statements, testimony, and on social media;
  - k. Maintain client and employer confidentiality when applicable;
  - l. Comply with obligations relating to confidential information and applicable data privacy laws in relation to its use, processing, and storage of professional and personal data;
  - m. Refrain from making false statements about the work of others and shall not maliciously injure or attempt to injure the prospects, practice, or employment position of others;
  - n. Develop and disseminate accurate information related to consultation, design, and construction of building enclosure systems.
  - o. Do not accept compensation—financial or otherwise—from more than one party for services on the same project, or for services pertaining to the same project, unless the circumstances are fully disclosed.
  - p. Members and registrants having substantial information leading to a reasonable belief that another member or registrant has committed a violation of this Code that raises a serious question as to the honesty, trustworthiness, or fitness of the other member or registrant are encouraged to initiate a complaint with the IIBEC Ethics Committee and/or applicable Authority Having Jurisdiction.

#### ENFORCEMENT AND AMENDMENT

1. Enforcement of the Code of Ethics is administered through the IIBEC Ethics Committee, appointed by the IIBEC Board of Directors, and the Board of Directors as set forth in the IIBEC Ethics Administrative Procedures.
2. The IIBEC Code of Ethics may be amended by the IIBEC Board of Directors upon a two-thirds vote of the Board.

For more information, please visit  
[iibec.org/membership/code-of-ethics](https://iibec.org/membership/code-of-ethics).



# CREDENTIAL PROGRAMS



Recognizing the need for qualifications and standards in an unregulated industry, IIBEC has developed seven highly regarded credential programs. Roof consultants, exterior wall consultants, waterproofing consultants, building enclosure commissioning providers, and quality assurance observers can establish their credentials through the following programs:

- Registered Building Enclosure Consultant (RBEC®)
- Registered Roof Consultant (RRC®)
- Registered Waterproofing Consultant (RWC®)
- Registered Exterior Wall Consultant (REWC®)
- Certified Building Enclosure Commissioning Provider (CBECxP®)
- Registered Roof Observer (RRO®)
- Registered Exterior Wall Observer (REWO®)

All seven represent a high level of competence, experience, and ethics, as well as a commitment to continuing education. Each requires an application process and satisfactory performance on an examination.

**The RBEC, RRC, RWC, REWC, CBECxP, RRO, and REWO designations represent the pinnacle of roofing, waterproofing, exterior wall, and building enclosure commissioning professionalism.**



Each candidate must submit a completed application to IIBEC with the appropriate application fee. Allow 75 days for processing. Applications may be completed online at [iibec.org/credentials](https://iibec.org/credentials). Study guides, which offer sample questions and a list of reference materials from which the exam questions were developed, are available.

Once an application has been approved, the candidate is eligible to take the exam.

Computer-based testing is available to all approved candidates. IIBEC provides the testing company with candidate eligibility information. Candidates are then contacted to schedule their testing sessions at one of the 1,000 conveniently located testing center locations.

Approved applications are valid for two years, and an application extension is required if the applicant does not earn the RRC, RWC, REWC, CBECxP, RRO, or REWO title within that time. Application extensions can be less involved than the original process, depending on the age of the information; therefore, immediate action is recommended. Contact IIBEC for a specific application.

Once an application has been approved and the exam has been passed, the candidate has qualified for a credential title and will be honored at an awards ceremony during the next annual IIBEC International Convention and Trade Show. A credential card is also provided and will be reissued every year upon renewal.

## GENERAL CONSULTANT KNOWLEDGE EXAM

The General Consultant Knowledge (GCK) exam was developed to test areas common to all components of the building enclosure (roofing, waterproofing, and exterior walls). This concept was designed to produce a more efficient testing process, eliminating common information being tested for each consultant designation. Once passed, the GCK exam will not need to be retaken should there be interest in pursuing multiple consultant designations. To earn any consultant designation (RRC, RWC, REWC), an applicant must take and pass both the GCK exam and the technical exam associated with the desired credential. If an applicant already possesses a consultant designation, he or she is exempt from taking the GCK exam. If only one is passed, the candidate will be required to retake only the part he or she failed. The exam that is passed will remain valid until the candidate is successful in passing the other exam and the designation

is earned. Candidates who do not meet the required grade point to pass an exam will have the option to retest every four months.

There is no separate application for the GCK exam. Approval of any consultant application will qualify the applicant to take it. A study guide for the exam is available from IIBEC and on the website.

The GCK exam is offered at computer-based testing centers and has 90 multiple-choice questions that involve the following topics: ethics, general skills, communications and reports, codes and standards, design processes, procurement processes, agreements, and construction administration. Exam takers are given four hours to complete this exam.

### FEES FOR THE GCK EXAM ARE AS FOLLOWS:

- \$275 for IIBEC members
- \$375 for nonmembers



## REGISTERED ROOF CONSULTANT PROGRAM

The demand for the Registered Roof Consultant (RRC) title by private clients and public agencies has been growing rapidly. Requirements for attaining this title are stringent and take considerable time and effort to fulfill. While membership is not required, most RRCs choose to join the organization. IIBEC's RRC Review and Update course is highly recommended for anyone planning to take the RRC exam. Several IIBEC skill enhancement courses are also recommended, including Roof System Thermal and Moisture Design, Roof Drain Design, and Wind Design courses. These courses are not part of the registration process and do not cover all that is on the RRC exam; however, they do provide important basic information.

### REQUIREMENTS

Successful candidates must demonstrate, by application, certain minimum requirements regarding education, personal work experience, character, and ethics. Verification of an applicant's education and/or work experience is done with a point system. A minimum of 100 points is required and is based on one of the following: work experience only; experience and education; or experience, education, and professional registration. In addition, the applicant must obtain a minimum of 70 continuing education

hours (CEHs) directly related to the roofing, waterproofing, and/or exterior wall industries. A satisfactory score on an exam is required after application approval. The RRC exam is offered at hundreds of conveniently located testing centers.

### FEES

The fees for RRC applicants are shown on page 31.

### THE RRC EXAM

Test takers will be given four hours to complete the computer-based exam. This will include 60 multiple-choice questions that involve the following topics: codes and standards, materials and properties, assemblies, analysis and design, and evaluation and testing. Some problems may involve mathematical computations that require familiarity with basic algebra, geometry, and trigonometry.

Scientific calculators and reference materials are provided within the exam. A study guide is available on the website or from IIBEC upon request.

### RENEWAL POLICY

Renewal requirements are listed on page 31 under Credential Renewal Policy.

# CREDENTIAL PROGRAMS



## REGISTERED WATERPROOFING CONSULTANT PROGRAM

IIBEC's Registered Waterproofing Consultant (RWC) program was established in 2005. The requirements for attaining this title are stringent and take considerable time and effort to fulfill. IIBEC's Waterproofing course is highly recommended for anyone planning to take the RWC exam. This course is not part of the credential process and does not cover all that is on the RWC exam; however, it does provide important basic information.

### REQUIREMENTS

Successful candidates must demonstrate, by application, certain minimum requirements regarding education, personal work experience, character, and ethics. Verification of an applicant's education and/or work experience is done with a point system. A minimum of 100 points is required and is based on one of the following: work experience only; experience and education; or experience, education, and professional registration. In addition, the applicant must obtain a minimum of 70 continuing education hours (CEHs) directly related to the roofing, waterproofing, and/or exterior wall industries. A satisfactory score on an exam is required after application approval. The RWC exam is offered in computer-based format at conveniently located testing centers.

### FEES

The fees for RWC applicants are shown on page 31.



### THE RWC EXAM

Four hours have been allotted for this computer-based exam. This includes 60 multiple-choice questions on the following topics: materials, systems, design, industry standards, and testing and investigation. Some problems may involve mathematical computations that require familiarity with basic algebra, geometry, and trigonometry. Scientific calculators and reference materials are provided within the exam.

### RENEWAL POLICY

Renewal requirements are listed on page 31 under Credential Renewal Policy.



## REGISTERED BUILDING ENCLOSURE CONSULTANT DESIGNATION

The Registered Building Enclosure Consultant (RBEC) designation is awarded to those who have earned the Registered Roof Consultant (RRC), Registered Waterproofing Consultant (RWC), and Registered Exterior Wall Consultant (REWC) credentials. Individuals desiring this designation are required to complete a form before it is awarded.

To maintain this designation, the individual renewal fees for the RRC, RWC, and REWC registrations must be paid. The RBEC

title may be listed in combination with the individual consultant designations or by itself.

Individuals holding this designation will be required to sign a form to confirm that the annually required 15 CEHs have been earned from a combination of roofing, waterproofing, and exterior wall courses.

It is possible to earn all 15 hours at the annual IIBEC convention.





## REGISTERED EXTERIOR WALL CONSULTANT PROGRAM

The Registered Exterior Wall Consultant (REWC) program was established in 2011. The requirements for attaining this des-

ignation are stringent and take considerable time and effort to fulfill. The following courses are recommended for those pursuing this designation: Exterior Wall Technology and Science, Exterior Concrete Wall Systems, Masonry Wall Systems, and Stucco and Exterior Finish Cladding Systems. These courses are not part of the registration process and do not cover all that is tested on the REWC exam; however, they do provide important basic information.

### REQUIREMENTS

Those who desire to become REWCs must substantiate certain requirements before qualifying to take the exam. These requirements include documenting levels of work experience, education, and high ethical standards. The application for this registration guides the applicant through the rigorous process.

Verification of an applicant's work experience is done using a point system; 100 points are required. In addition, the applicant must have at least six years of exterior wall consulting experience and a minimum of 150 continuing educational hours (CEHs) in the

roofing, waterproofing, and/or exterior wall industries. Credit will be given toward this requirement for advanced degrees and professional licensing.

The REWC exam is available in computer-based format at conveniently located testing centers.

### FEES

The fees for REWC applicants are shown on page 31.

### THE REWC EXAM

Candidates will have up to four hours to complete the exam. Sixty multiple-choice questions will test knowledge of exterior wall systems in the following areas: design, materials, investigations, codes and standards, testing, and installation and repair. Some problems may involve mathematical computations that require familiarity with basic algebra, geometry, and trigonometry. Scientific calculators and reference materials will be provided within the exam.

### RENEWAL POLICY

Renewal requirements are listed on page 31 under Credential Renewal Policy.



## REGISTERED EXTERIOR WALL OBSERVER PROGRAM

With the expansion of IIBEC's focus from roofing to the entire building enclosure, the organization saw the need for

the development of a designation for exterior wall observers. Quality assurance observers monitor the construction process to ensure that exterior wall projects stay in compliance with approved construction drawings, specifications, and best-practice or warranty-stipulated installation procedures.

The Registered Exterior Wall Observer (REWO) designation validates that candidates possess the knowledge, skills, and abilities required to provide impartial, informed observation and documentation while performing the duties of project observation and quality assurance related to the construction of exterior wall systems. IIBEC's Building Enclosure Quality Assurance and its Exterior Wall Quality Assurance courses are recommended for those taking this exam.

### REQUIREMENTS

The REWO designation is offered to those who qualify through an application process and computer-based exam. Potential candidates must:

- Have two years of exterior wall systems construction experience, two years of quality assurance observation experience, or four years as an exterior wall systems technical or sales representative.
  - Obtain a minimum of 12 hours of continuing education within the building enclosure industry.
  - Attain a satisfactory score on the computer-based exam.

### FEES

The fees for REWO applicants are shown on page 31.

### REWO EXAM

The exam includes 75 questions designed to measure the applicant's knowledge regarding construction documents, ethical standards, communication skills, safety practices, exterior wall systems, field observation practices, and reporting. Up to three hours are allotted to complete it. Results will be conveyed to the candidate immediately upon completion.

### RENEWAL POLICY

Renewal requirements are listed on page 31 under Credential Renewal Policy.

# CREDENTIAL PROGRAMS



## REGISTERED ROOF OBSERVER PROGRAM

In an effort to improve the overall quality of construction, IIBEC offers the Registered Roof

Observer (RRO) program. The RRO title is the preferred standard of practice among quality assurance observers. IIBEC's Roof Technology and Science I and II courses, Building Enclosure Quality Assurance, and the Rooftop Quality Assurance courses are highly recommended for those taking the RRO exam. These courses do not provide all of the information needed to pass the RRO exam but do provide important basic information.

### REQUIREMENTS

The successful applicant must meet the following requirements:

- Have two years of roofing construction experience, two years of quality assurance observer experience, or four years as a technical or sales representative.
- Obtain a minimum of 12 hours of continuing education within the roofing industry.
- Attain a satisfactory score on the examination.

### FEES

The fees for RRO applicants are shown on page 31.

### RRO EXAM

Once an application has been approved, the candidate must achieve a satisfactory score on the examination, which is tailored neither to any one particular area of roof observation nor to the design and construction practices unique to any



geographic area. The exam deals primarily with roof observations in general. It is computer based and is up to three hours long. It may include all phases of roof observations (methodology and construction), both steep- and low-slope roofing, and all systems (shingle, tile, slate, built-up, single-ply, wood, metal, and spray-applied foam).

In order to receive a passing score on the examination, the examinee must be thoroughly familiar with the basic methodology of quality assurance observation and have a broad knowledge of ethics, roof systems and materials, field testing, reporting, safe work practices, roles and responsibilities, and construction documents.

### RENEWAL POLICY

Renewal requirements are listed on page 31 under Credential Renewal Policy.

## CREDENTIAL PROGRAM FEES

The fees for applicants for all credentials, regardless of designation *except the CBECxP*, are as follows:

### APPLICATION FEE:

- \$375 for IIBEC members
- \$475 for nonmembers

### EXAM FEE:

- \$275 for IIBEC members
- \$375 for nonmembers

## CREDENTIAL RENEWAL POLICY

Each IIBEC credential must be renewed annually. Renewal for the REWO and RRO credentials require 10 continuing education hours (CEHs), and the RRC, RWC, and REWC credentials require 12 CEHs in the roofing, waterproofing, and/or exterior wall industries. Payment of the \$175 renewal fee (\$275 for nonmembers) is also required.

To maintain the RBEC designation, the individual renewal fees for the RRC, RWC, and REWC credentials must be paid. The RBEC credential may be listed in combination with the individual consultant designations or by itself. Renewal of the RBEC requires 15 CEHs that have been earned from a combination of roofing, waterproofing, and exterior wall courses.

It is possible to earn all renewal CEHs at the annual IIBEC convention.

## CERTIFICATION PROGRAMS



### CERTIFIED BUILDING ENCLOSURE COMMISSIONING PROVIDER PROGRAM

The Certified Building Enclosure Commissioning Provider (CBECxP) is a designation for the professional who acts as the technical and administrative director of the building enclosure commissioning process. Individuals who obtain the CBECxP credential meet a variety of requirements including: at least four years of building enclosure commissioning experience; attainment of 100 points from education, employment, and other professional credentials, per the application point system; 70 hours of continuing education directly related to building enclosure commissioning and achievement of a passing score on the CBECxP exam.

The CBECxP exam has 90 multiple-choice items covering building enclosure commissioning topics ranging from core competencies to occupancy and operations. Three hours are allowed for the exam. The CBECxP program fees and recertification details may be found at [iibec.org/cbecxp](http://iibec.org/cbecxp)

# EDUCATION PROGRAMS



IIBEC offers a wide variety of educational offerings throughout the year covering all segments of the building enclosure. Taught by experienced field professionals, these courses present the latest information in technology and industry best practices. Courses are available in multiple formats:

- IIBEC-delivered education
- IIBEC chapter-sponsored education
- IIBEC on-demand education

IIBEC's educational programs have earned an industry-wide reputation for offering top-quality, comprehensive building

enclosure education. Designed to meet the educational needs of professionals with varying levels of experience, IIBEC's education programs vary across topic areas in proficiency level from introductory (fundamental concepts) to advanced (specific application principles and theory).

All IIBEC courses are approved for IIBEC continuing education hours (CEHs). Many IIBEC courses are approved for American Institute of Architects (AIA) learning units (LU HSW or LU Elective). The IIBEC Education Team can be reached at: [education@iibec.org](mailto:education@iibec.org).



## IIBEC-DELIVERED EDUCATION

Live education events, taught by experienced industry professionals, are scheduled throughout the year. Check the IIBEC Calendar of Events for upcoming offerings.



## CHAPTER-SPONSORED EDUCATION

IIBEC chapters offer a variety of chapter-sponsored education programs throughout the year. Check the IIBEC Calendar of Events and specific chapter websites for upcoming education offerings.



## ON-DEMAND EDUCATION

Earn continuing education credits from the convenience of your own home office. Visit LearnUpon, IIBEC's Online Learning Platform, for a catalog of courses that are available on-demand. Engage in education on a variety of topics—when it works for your schedule!



## IIBEC CORE COURSES



8 CEHs

### BUILDING ENCLOSURE QUALITY ASSURANCE

Building Enclosure Quality Assurance is a course for professionals interested in field inspections and quality of applications, including material manufacturers, general contractors, quality assurance observers, and field inspectors. This course covers the diverse and challenging aspects of roofing, waterproofing, and exterior walls encountered in the field. Highlights of the course include the role and responsibilities of the quality observer, contract administration, and construction contract documents.



16 CEHs

### EXTERIOR CONCRETE WALL SYSTEMS

This course is the first specific exterior wall course that builds upon the fundamentals presented in Exterior Wall Technology and Science. The purpose of the course is to provide an in-depth understanding of exterior concrete wall systems that serve as part of the building enclosure system. This course will cover properties of concrete materials that affect their use in building enclosures, applicable codes and standards, design and construction requirements, and evaluating, repairing, and maintaining exterior concrete walls.



8 CEHs

### EXTERIOR WALL QUALITY ASSURANCE

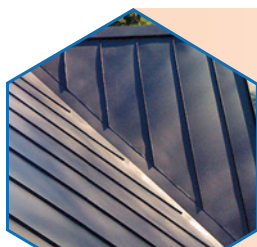
Exterior Wall Quality Assurance is a course for professionals interested in performing observation to ensure that exterior wall systems are installed in accordance with construction documents. The program covers diverse topics in the construction of exterior walls and is intended for manufacturers, general contractors, quality assurance observers, and field inspectors.



16 CEHs

### EXTERIOR WALL TECHNOLOGY AND SCIENCE

This course provides exterior wall technology and terminology that will be used as the fundamental base for additional exterior wall course offerings. The course covers a broad range of topics, including types and function of exterior walls, psychrometrics and moisture movement, design objectives and building code requirements, wall penetrations, materials, coatings, and water repellants and sealants. This course is aimed at those preparing to expand their knowledge into exterior walls and those already practicing in this area who want to further develop their knowledge in exterior wall technology.



16 CEHs

### METAL ROOFING

Metal has unique properties that separate it from other roof choices. For over three millennia, metal roofing has been a durable, aesthetically appealing design element utilized for significant buildings. When corrugated metal roofing was introduced in the late 19th century, it became a welcome economical, fire-resistant roofing option. Metal roofing continues to evolve with technological advances in alloys, coatings, and the use of "floating" standing-seam roof panels. Course content is intended to provide attendees with a comprehensive understanding of metal roofing.

# EDUCATION PROGRAMS

## IIBEC CORE COURSES



16 CEHs

### PROFESSIONAL BUILDING CONSULTING

This course provides an overview of consultant roles that are unique to the roofing, exterior wall, and waterproofing industry. The course also identifies the consultant practices that are common to these three broad disciplines. The course examines building enclosure consultants and discusses what they do and how they do it and is a recommended foundation course for becoming more specialized. **Available on-demand in the Online Learning Platform.**



6 CEHs

### REROOFING

This course covers a range of concepts, including a discussion of the steps required for the roof consultant to successfully evaluate an existing roof and to make decisions regarding roof design using available references, resources, and evaluation techniques. Topics presented include review of reroof options and decision-making principles, building code considerations, reroof considerations, and examples of roof systems. Proper presentation of plans and specifications, as well as the role of stakeholders, is discussed. This course examines the elements required to properly execute meetings, project site visits, design resolutions, and project closeout. This course is designed for building consultants, architects, and engineers who regularly engage in the renovation of existing buildings. **Available on-demand in the Online Learning Platform.**



16 CEHs

### ROOF TECHNOLOGY AND SCIENCE I

This course is the first component of a two-part series covering, in detail, aspects of the technology and science of roofing. The course covers the history and evolution of roofing up to present-day common applications. The course features terminology and technical information regarding roof decks and structures, roof insulation, bitumen membranes, built-up and modified-bitumen membranes, and flashing systems. An understanding of heat transfer theory, moisture, thermal design, and the calculation of U-factors will also be presented. **Available on-demand in the Online Learning Platform.**



16 CEHs

### ROOF TECHNOLOGY AND SCIENCE II

This is the second course of a two-part series covering, in detail, aspects of the technology and science of roofing. Highlights of the program include: fundamentals of single-ply, polyurethane foam, and PMR roof systems; basic concepts and terminology of metal roofing; steep roof design and installation of asphalt shingles, tiles, wood shakes, and shingles; building codes; fire testing/ratings of roofing; a basic understanding of wind interaction upon roofing and typical wind ratings; principles of roof asset management, including roof inspections, maintenance, and nondestructive evaluations. **Available on-demand in the Online Learning Platform.**



8 CEHs

### ROOFTOP QUALITY ASSURANCE

This course is for professionals interested in performing observation services to ensure the roof installation is consistent with construction documents and ownership requirements. The program includes thorough overviews of the major roof system assemblies that the professional observer will encounter when performing rooftop quality assurance services for ownership/design groups. The course is ideal for roofing material manufacturers, general contractors, quality assurance observers, architectural and engineering field techs, and field inspectors. **Available on-demand in the Online Learning Platform.**

## IIBEC CORE COURSES



### RRC REVIEW AND UPDATE

This course is designed to provide skill review and updated information for individuals who have already passed the RRC exam. Additionally, this course may be beneficial to individuals who have prepared to sit for the RRC exam and seek to refresh their knowledge of technical topics. Covered during the program: wind design, including ASCE 7 and FM Global requirements; thermal calculations; CSI changes; green roofing principles; and roof asset management (RAM) calculations. **Available on-demand in the Online Learning Platform.**



### VEGETATIVE ROOFING FOR THE DESIGN PROFESSIONAL

This course is structured for those who design vegetative green roofs or who are responsible for correcting vegetative green roof thermal or moisture protection performance problems. Vegetative green roof design is a technically demanding and evolving growth industry. This course provides guidance in the areas of design criteria, system selection, reference standards, and flashing principles, and it discusses the influences of Factory Mutual, ASTM, GRHC, and NRCA publications and guidelines.



### WATERPROOFING

This course provides a detailed look at the differences between roofing, damp-proofing, and waterproofing as well as discussion of waterproofing materials and accessories, design and specification, and application techniques. Through analysis and discussion of presented case studies, both practicing and aspiring waterproofing consultants will gain practical insights into the methods and strategies for identifying causes of waterproofing failures and remediation solutions. Specific focuses include split-slab plaza deck systems, surface-applied waterproofing, and below-grade waterproofing.



EXPERIENCE IIBEC'S ON-DEMAND LEARNING TODAY

**DISCOUNT CODE:**  
**2025Guide**

[iibec.learnupon.com/store](https://iibec.learnupon.com/store)

**30%  
DISCOUNT**  
VALID UNTIL  
JUNE 1, 2026





# JOIN

The World's Most Elite Organization  
Of Building Enclosure Consultants

**COMMUNITY. CREDENTIALS.  
CURATED LEARNING.**

Join Today At  
**IIBEC.org**



# PREMIER EVENTS



## IIBEC INTERNATIONAL CONVENTION AND TRADE SHOW

IIBEC's International Convention and Trade Show provides a forum for professionals who share a common goal of sustaining the highest standards and a desire to learn from one another. It provides an opportunity to explore current products and technologies; exchange ideas, solutions, insights, and information; attend cutting-edge educational sessions; and learn from renowned experts.

Attendees broaden and enhance their awareness of the industry and develop close working relationships with peers and vendors. Participants add value to the services they provide their customers by attending IIBEC's convention. Industry leaders, large and small, display their products and answer technical questions. The latest in industry research and practices is presented in technical seminars, where attendees may ask questions and earn continuing education hours (CEHs).

Other events include administrative and committee meetings to determine IIBEC's future direction, auxiliary seminars, live product demonstrations, a golf tournament, regional meetings, an awards luncheon, and a celebratory banquet with entertainment.

*Travel + Leisure* recently named Sacramento one of the 50 best places to travel. This historic center of the Gold Rush-era is experiencing a new boom, and farm-to-fork has never been more delicious. We can't wait to see you in Sacramento!



MARCH 12–15, 2026  
SAFE CREDIT UNION  
CONVENTION CENTER  
SACRAMENTO, CALIFORNIA



### CONVENTION HAPPENINGS

Technical Sessions  
Trade Show  
Auxiliary Seminar  
Committee Meetings  
The Excellence in Building Enclosure Consulting Awards  
Product Demonstrations  
Foundation Golf Tournament  
Awards Annual Ceremony  
President's Annual Banquet  
RCI-IIBEC Foundations' Live Auction & Reception

### WHO SHOULD ATTEND

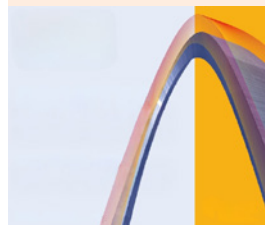
IIBEC Members	Purchasing Agents
Specifiers	Industry Representatives
Consultants	Building Owners
Building Officials	Property Managers
Engineers	Government Officials
Architects	General Contractors

## BUILDING ENCLOSURE SYMPOSIUM (BES)

IIBEC's Building Enclosure Symposium features next-level education focusing on the design, construction, maintenance, and repair of modern and/or older building enclosures. Presenters at this annual event offer relevant solutions to building enclosure challenges through real world examples and specific case histories.

For the 2025 symposium, IIBEC heads to St. Louis, Missouri, a city whose architecture reflects its rich history of innovation and art. Presentations include roofing, waterproofing, fenestration, exterior wall, building enclosure commissioning, and other pertinent topics within the industry.

Learn more at [iibec.org](https://iibec.org) under Education and Events.



OCTOBER 26–28, 2025  
ST. LOUIS UNION  
STATION HOTEL  
(CURIO COLLECTION  
BY HILTON)  
ST. LOUIS, MISSOURI

# Thank You to Our SPONSORS



June 2024–May 2025



Interested in IIBEC sponsorship opportunities?  
Contact Arissa Cooper at [acooper@iibec.org](mailto:acooper@iibec.org) for more information.

# PERIODICAL PUBLICATIONS



## IIBEC interface



*IIBEC Interface* is full of technical articles, industry events, professional and business development tips, and other information of interest to the building enclosure community. IIBEC members receive the publication as part of their membership. Additionally, *IIBEC Interface* is distributed to industry contacts and at trade shows, seminars, and meetings throughout the US,

Canada, and Mexico. Additional subscriptions may be purchased online at [iibec.org](https://iibec.org).

The journal's high-quality technical articles are reviewed by a peer committee of professionals. Members and industry professionals are urged to contribute articles for publication. *IIBEC Interface* aims to keep readers up to date with industry changes; to provide a forum for exchange of ideas and technical knowledge; and to connect with all elements of the building enclosure industry, establishing a common ground for ongoing dialogue.

Advertisements in *IIBEC Interface* are placed on a first-come, first-served basis. Contact IIBEC Director of Marketing and Sales Arissa Cooper at 919-859-0742 for additional information.

For information on how to submit an article, contact Executive Editor Christian Hamaker at [chamaker@iibec.org](mailto:chamaker@iibec.org) or 919-551-6215.

FIND THE ISSUE FOCUS FOR EACH EDITION AT [IIBEC.ORG/HUB/INTERFACE](https://iibec.org/hub/interface)



SUBMISSION	ISSUE FOCUS	EDITORIAL DEADLINE
January 2026	Technology and AI	November 3, 2025
February 2026	Forensics	December 1, 2025
March/April 2026	Roof Drainage	January 2, 2026
May/June 2026	Low-Slope Metal Roofs	March 2, 2026
July/August 2026	Parking Decks	May 1, 2026
September 2026	Building Commissioning	July 1, 2026
October 2026	Building Codes	August 3, 2026
November 2026	Testing	September 1, 2026
December 2026	Wind and Weather	October 1, 2026

\*Subject to change without notice



## Digital interface



*IIBEC Interface*'s digital edition is mobile-responsive and HTML-optimized, allowing readers to switch between the Reading view—with scrolling articles that automatically adjust to your device—and the Page view—a digital replica of the publication. Members can read the journal on their computers or digital devices.

The digital *IIBEC Interface* may also be accessed at the Hub ([iibec.org/hub](https://iibec.org/hub)), with full access for IIBEC members.



# DIGITAL RESOURCES



## iibec.org

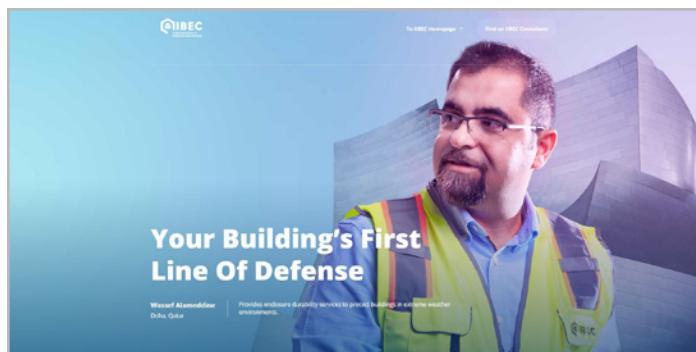
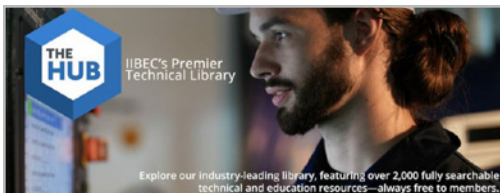
IIBEC's website (iibec.org) is a valuable source of industry information providing the building enclosure profession with detailed information about benefits, continuing education, and association events.

Additionally, it provides visitors with an understanding of IIBEC's mission and its role within the building enclosure industry. Potential clients can search the online database for IIBEC members in their area or across the globe. The site includes information on the following:

- Member benefits and how to join
- Credential programs
- Association and industry news
- The IIBEC marketplace
- Calendar of events
- Live, in-person webinars, on-demand education, and more

## THE HUB

Find more than 2,500 technical resources—IIBEC *Interface* articles, meeting proceedings, technical advisories, free education for members, and IIBEC videos—at [iibec.org/hub](https://iibec.org/hub).

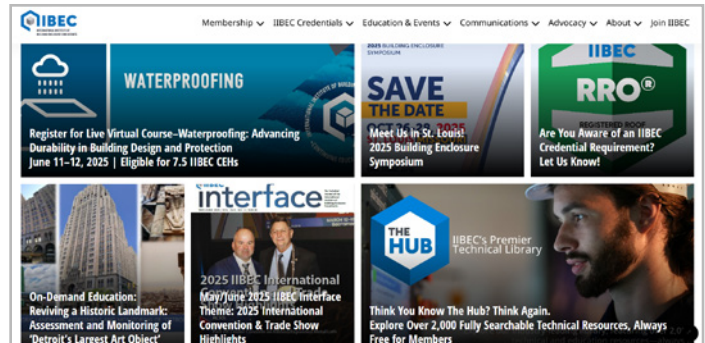


## IIBEC CONSULTANT MEMBER MICROSITE

Our [consultant.iibec.org](https://consultant.iibec.org) microsite highlights our building enclosure consultants and explains:

- Why Building Enclosures Matter
- Why Choose an IIBEC Consultant?
- What IIBEC Consultants Can Do for You
- The Impact of IIBEC Consultants

Plus, use the site to find an IIBEC Consultant in your area!



## THE WEEKLY ENCLOSURE, CHAPTER RESOURCE CENTER, AND SOCIAL MEDIA

### THE WEEKLY ENCLOSURE

Sent to more than 10,000 building enclosure professionals, our weekly newsletter continues to generate high open rates and click rates.

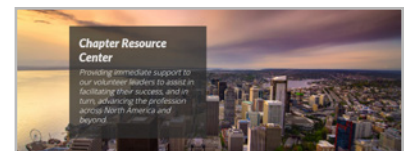


### NEWSFEED

The IIBEC Newsfeed offers a continuous listing of association and industry news, member profiles, and chapter news. Check out the “News and Press” link at the top of the page at [iibec.org](https://iibec.org) anytime and read about what's happening.

### CHAPTER RESOURCE CENTER

Our Chapter Resource Center is exclusively for our volunteer leaders, providing them with the tools and resources to facilitate success.



### SOCIAL MEDIA

IIBEC's social media presence continues to grow. Discuss what's going on in the building enclosure consulting field on IIBEC's official social media pages:





# OPPORTUNITIES FOR OUTREACH



IIBEC is a professional association serving the needs of more than 3,900 members from across the globe (primarily in North America). Members of IIBEC make up one of the most influential demographics in the building enclosure industry. The association's members specify billions of dollars of roofing, waterproofing, and

exterior wall products each year.

Whether it's to coordinate a reroofing project, to design a new roof, or to solve a waterproofing or exterior wall issue, IIBEC members are called upon by building owners to offer their expertise for specification, design, and quality assurance.

Marketing through IIBEC is the surest means to gain access to this specific demographic.

To access detailed information regarding the opportunities below, visit [iibec.org/advertising-opportunities](https://iibec.org/advertising-opportunities).

## PRINT MARKETING

- *IIBEC Interface* technical journal

## DIGITAL MARKETING

- IIBEC website
- IIBEC Newsfeed
- Digital *IIBEC Interface*
- IIBEC Career Center
- and more



## IN-PERSON MARKETING AND RELATIONSHIP-BUILDING OPPORTUNITIES

- International Convention and Trade Show
  - Exhibitors
  - Sponsorships
  - Live product demonstrations
  - Mobile App and push notifications
  - Event program
  - Educational proceedings publication
- IIBEC Building Enclosure Symposium
  - Exhibitors
  - Sponsorships
  - Educational proceedings
- Board Meetings
  - Executive Committee meeting sponsorships
  - Board of Directors meeting sponsorships
- Regional and metro-area chapter meetings (contact local chapters for sponsorships)
  - Exhibits
  - Golf outing sponsorships
- Leadership Development Workshop
  - Sponsorships
  - Tabletops



For more information, contact IIBEC's director of marketing and sales at 800-828-1902.

# FOUNDATIONS

## RCI IIBEC FOUNDATION

The RCI-IIBEC Foundation was established in 2001. Its mission is to support research, education and the dissemination of information for issues important to the building enclosure industry. The foundation board of directors is responsible for raising, stewarding, and allocating funds for programs and projects that meet its mission. Its members represent professionals engaged in construction, consulting, design, education, manufacturing, research, and industry standards.

Foundation activities have included funding for the *Wind Uplift on Low Slope Roofs* (5th Edition) which highlights significant code changes and new information on tornadoes and hurricanes incorporated because of the new minimum design loads and associated criteria for buildings and other structures (ASC/SEI 7-22). The authors are IIBEC member Stephen L. Patterson, RRC, PE, of Roof Technical Services Inc. and Madan Mehta, PhD, PE, with the University of Texas at Arlington.

Support for an *Analysis of Unit Price Procurement* conducted by professors Paul Chinowsky of the University of Colorado Boulder and Gordon Kingsley of Georgia Tech.

Supporting and sending 36 students to IIBEC International Convention the trade show in Orlando, Florida. Supporting and sending 39 students to the IIBEC/OBEC BES in Toronto, Ontario, Canada. Since 2012, the foundations have supported 428 students attending IIBEC educational events such as these, and many of these students now have careers in the building and closure industry.

The Foundation approved a grant proposal from Charles Pankow Foundation for Phase 3 research on heat transfer on spandrel glazing as well as funding for the scanning of older Interface technical documents to be uploaded to the IIBEC Hub.

*Roof Drainage* (Second Edition) was also funded as an update to the 2003 edition resulting from significant changes in the International Building Code, the International Plumbing Code, and the methods used for roof design. This book was also authored by Stephen L. Patterson, RRC, PE, of Roof Technical Services Inc. and Madan Mehta, PhD, PE, with the University of Texas at Arlington.

The foundation also established the Robert W Lyons and the RCI Lewis W Newlan scholarship funds. These needs-based scholarships support undergraduates and graduate students studying engineering, architecture, construction, or building sciences. To date the foundation has given out \$227,500 to 65 students from the US and Canada.

The RCI Foundation has teamed up with CARS (Charitable Adult Rides and Services) to offer a vehicle donation program for our supporters. CARS is a nonprofit that helps the US foundation accept and process donate vehicles, including cars, trucks, RV's, boats, and even airplanes. To learn more about the program go to [careasy.org/nonprofit/rci-iibec-foundation-inc](http://careasy.org/nonprofit/rci-iibec-foundation-inc) or call 855-500-7433.

The RCI-IIBEC Foundation established a charity brokerage account to enable gifts of listed securities. These donations support foundation activities that will advance the building and closure, including research, education programs, foundations, publications, and student scholarships.

To learn more about the many projects and publications funded by the foundation visit [rci-iibecfoundation.org](http://rci-iibecfoundation.org).

The foundation board of directors is committed to supporting building enclosure research and its continually identifying educational and research areas in roofing, waterproofing, and exterior wall systems. The foundation carefully reviews and awards grants for the development of new and improved data and the publication of results. Grant proposals and requests are welcome at any time. Additional information and applications are available on the foundation's website.

The foundation is funded by individual and corporate donations. To donate and to be part of the future of our industry, contact Development Officer Rick Gardner at 1-800-828-1902, or 919-859-0742, or [R.Gardner@ibec.org](mailto:R.Gardner@ibec.org); Or mail your donation to RCI-IIBEC Foundation, 434 Fayetteville St. Suite 2400, Raleigh, North Carolina 27601.



*Students at the 2025 IIBEC International Convention and Trade Show.*



*Donation from the SoCal Chapter of IIBEC to the foundation.*



*Ted Sheridan and Ralph Paroli accept a donation check to the RCI Foundation Canada from the Southern Ontario Chapter of IIBEC.*





## RCI FOUNDATION CANADA

The RCI Foundation Canada (RCIF Canada) received its charity status from Revenue Canada in 2010. This entity runs parallel to the RCI-IIBEC Foundation in the United States. The mission of our RCIF Canada is to support people pursuing research, advancing their education, and disseminating information on issues related to building practices. For more information on RCIF Canada, to donate, or to request funding, visit [rcifoundation.ca](http://rcifoundation.ca).

### FOUNDATION FUNDED ACTIVITIES INCLUDE:

- Supporting fifty architectural technology students from Vanier College to tour the Canadian Museum of Nature and Parliament's West Block, both architecturally significant landmarks in Ottawa.
- Approved a two-year grant with the University of Victoria for research entitled "Aerial Thermography for Inspection and Energy Audit of Roofs".
- Supporting 23 students to attend the 2024 IIBEC/OBEC BES in Toronto as well as supported the attendance of an instructor from Southern Alberta Institute of Technology.
- Funding research for National Research Council of Canada's field testing of an investigation into the ability of portable wind uplift apparatus to determine in-situ roof uplift resistance.

## THE MISSION

**To support research, education, and the dissemination of information for issues important to the building enclosure industry.**

- Funding Canadian students to attend the IIBEC International Convention and Trade Show and Building Enclosure Symposium (BES) annually.
- Contributing regularly to humanitarian organizations across Canada, including the Salvation Army for its relief efforts during times of natural disasters.

The RCIF Canada is funded by individual and corporate donations. To donate, please mail your check to RCI Foundation Canada, C/O Stocking and Coming, #2-9124 Glover Rd. PO Box 8 Stn Fort Langley, Langley, British Columbia V1M 2R4 Canada.



*Architectural technology students from Vanier College touring the Canadian Museum of Nature.*



*Students attending the 2025 IIBEC International Convention and Trade Show in Orlando, Florida.*



*Students attending the 2024 IIBEC/OBEC BES in Toronto, Canada.*



*Madan Mehta (left) and Stephen Patterson (middle) present a copy of their new book to RCI-IIBEC Foundation President David Hawn.*



*2025 Foundations Golf Outing in Orlando.*

# FOUNDATIONS



*The Foundation Board (Left to Right): Rick Gardner, Mike Blanchette, Helene Hardy Pierce, David Hawn, Mike DuCharme, Diana Vitiritti, Lionel van der Walt, Sid Hankins, Ted Sheridan, Patrick Banning, Scott Hinesley, Walt Rossiter, and Brian Pallasch (not pictured Andre Desjarlais, Ralph Paroli, Melany Rizzo).*

## Additional information

The RCI-IIBEC Foundation is designated as a 501(C)3 tax exempt entity by the IRS. Contributions received from US taxpayers may be tax deductible. Contributions from corporations may be deductible as a business expense.

The RCI Foundation Canada is recognized by the Canadian Revenue Agency as a registered charity. Contributions received from Canadian taxpayers may be tax deductible. We recommend you consult with your tax advisor if you have questions. For more information on all registered charities in Canada under the Income Tax Act, please visit The Canada Revenue Agency, [cra.gc.ca/charities](http://cra.gc.ca/charities).

### CONTRIBUTION LEVELS

#### RCI-IIBEC Foundation and RCI Foundation Canada

Cornerstone Society	\$150,000 or more
Ambassador	\$100,000 – \$149,000
Benefactor	\$50,000 – \$99,999
Patron	\$25,000 – \$49,999
Sponsor	\$10,000 – \$24,999
Leader	\$5,000 – \$9,999
Partner	\$1,000 – \$4,999
Supporter	\$500 – \$999
Advocate	\$100 – \$499
Participant	up to \$99

## Ways To Support The Foundations

First, support the foundations and their work through monetary donations, vehicle, property, or stock donations.

Second, bring the foundation board of directors grant request, ongoing projects, or ideas for projects that support the foundations mission of advancing research, education, and knowledge sharing on issues important to the building enclosure industry.

Third, encourage your network to support and participate in the foundation's programs, such as student scholarships, convention sponsorships, student hosting, Giving Tuesday, and the annual golf outing and auction at the IIBEC International Convention and Trade Show.

The US foundation has established a charity brokerage account to facilitate gifts of listed securities and stock. Another possible way of donating is through Donor Advised Funds (DAF), where the donor recommends grants to specific charities such as the RCI-IIBEC Foundation. Finally, the foundation accepts the donation of property, vehicles, boats and planes. For more information, please contact the RCI-IIBEC foundation development officer at [rgardner@iibec.org](mailto:rgardner@iibec.org) or 919-859-0742.



## RCI-IIBEC FOUNDATION BOARD OF DIRECTORS

**David R. Hawn, F-IIBEC, RRC, CEM – Chair**

Dedicated Roof & Hydro-Solutions LLC

Phone: 703-266-6638 • Email: drhawn@drhroofsolutions.com

**Helene Hardy Pierce, F-IIBEC – Secretary**

Phone: 570-688-5701 • Email: hpierce926@outlook.com

**Sidney I. Hankins III, F-IIBEC, RRC, AIA – Treasurer**

Roof Design and Consulting Services Inc.

Phone: 865-584-3770 • Email: s.hankins@roofdcs.com

**Patrick Banning**

Rimkus Consulting Group

Phone: 905-607-7244 • Email: pbanning@rimkus.com

**Mike Blanchette, F-IIBEC**

Phone: 214-213-9150 • Email: mikeb69@msn.com

**André Desjarlais**

Oak Ridge National Laboratory

Phone: 865-574-0022 • Email: desjarlaisa@ornl.gov

**Michael DuCharme**

Carlisle Construction Materials

Phone: 717-245-7204 • Email: mike.ducharme@carlisleccm.com

**Scott Hinesley, F-IIBEC, RRC, PE**

REI Engineers

Phone: 704-596-0331 • Email: shinesley@reiengineers.com

**Ralph Paroli, PhD**

National Research Council of Canada

Phone: 613-715-2302 • Email: ilorap@proton.me

**Walter J. Rossiter Jr., PhD, F-IIBEC**

W. J. Rossiter & Associates

Phone: 301-253-3534 • Email: wjrossiter@verizon.net

**Ted Sheridan, F-IIBEC, RBEC, RRC, RWC, REWC, PEng**

Fishburn Sheridan & Associates Ltd.

Phone: 613-880-7778 • Email: ted@fsaeng.com

**Diana Viteritti**

Situra Inc.

Phone: (416) 558-6099 • Email: diana@situra.com

**Lionel van der Walt**

Cell: 919-510-3102 • Email: lionelvdwalt@gmail.com

**Brian T. Pallasch, CAE, CEO/EVP**

International Institute of Building Enclosure Consultants

Phone: 919-859-0742 • Email: bpallasch@iibec.org

## RCI FOUNDATION CANADA BOARD OF DIRECTORS

**Ralph Paroli, PhD – Chair**

National Research Council of Canada

Phone: 613-715-2302 • Email: ilorap@proton.me

**Ted Sheridan, F-IIBEC, RBEC, RRC,**

**REWC, RWC, PEng – Treasurer**

Fishburn Sheridan & Associates Ltd.

Phone: 613-880-7778 • Email: ted@fsaeng.com

**Patrick Banning – Secretary**

Rimkus Consulting Group

Phone: 905-607-7244 • Email: pbanning@rimkus.com

**Diana Viteritti**

Situra, Inc.

Phone: (416) 558-6099 • Email: diana@situra.com

# IIBEC HONOREES



## IIBEC President's Award

The IIBEC President's Award is presented to those who have made a

significant contribution to IIBEC's mission in the past year.

**Burt Carver, RRC, RRO (2024)**

**Aaron Nelson, RBEC, RRC, RWC, RRO, REWC (2025)**

**Antai Ramos Stevens, RRO (2025)**

**Alejandrina Galicia Escobar (2025)**



## Michael DeFrancesco Outstanding Volunteer Award

Created in honor of

long-time member Michael DeFrancesco, this award is presented to the volunteer whose contribution over the course of the past year(s) stands above the rest.

**Lyle D. Hogan, F-IIBEC, RRC, PE (2003)**

**William Rubel, F-IIBEC, RRC (2004)**

**William Cypher, F-IIBEC, RRC (2005)**

**Kamran Farahmandpour, F-IIBEC, RRC, RWC, PE, CCS (2006)**

**Olan H. Lewis (2007)**

**John D. Shepherd, RRC, PE (2008)**

**Donald Bush Sr., F-IIBEC, RRC (2009)**

**Alan Spaite, PE, CCPM (2010)**

**Dale Purvis, RRC, RRO, CDT, LEED AP (2011)**

**William Waterston, RRC, AIA (2012)**

**Brian Gardiner, F-IIBEC, RRC, CCS (2013)**

**Russell A. Raymond, RRC, REWC, RRO, CDT (2014)**

**Stephen H. Alberico, AIA (2015)**

**Katharine Spavins (2016)**

**Jonathan Cannon, RRC, REWC, RRO, REWO, CDT (2017)**

**Jerry Abendroth, RBEC, RRC, RWC, REWC, RRO, CDT (2018)**

**Brian R. "Rick" Craig, F-IIBEC, RRC, RRO (2019)**

**Kenrick J. Hartman, RBEC, RRC, RWC, REWC, PE, LEED AP BD+C (2020)**

**Paul Buccellato, F-IIBEC, RWC, REWC, FASTM, AIA (2021)**

**April L. McKelvey, RRC, RRO (2022)**

**André Coppin, RRC, RRO (2023)**

**Stephen Baxter, RRC, RRO (2024)**

**Melissa Barrows-Lieb, RRC, RRO, CCCA, CDT (2025)**



## Joe F. Hale Lifetime Achievement Award

Renamed for its first recipient, Joe F. Hale,

in 2022, the Lifetime Achievement Award was presented for the first time in 2011 and is awarded to those individuals who have provided a lifetime of extraordinary service and contributions to the success of the International Institute of Building Enclosure Consultants.

**Joe F. Hale, F-IIBEC, H-RRC (2011)**

**Lyle D. Hogan, RRC, F-IIBEC, PE (2014)**

**Richard "Dick" Fricklas (2014)**

**Robert "Bob" Lyons, F-IIBEC (2016)**

**Michael D. Blanchette, F-IIBEC, RRC, RRO (2017)**

**David R. Hawn, F-IIBEC, RRC, CEM (2018)**

**Philip D. Dregger, F-IIBEC, RRC, PE (2019)**

**Gerard "Jerry" Teitsma, F-IIBEC, RRC, RRO, CCCA (2019)**

**Richard "Dick" Canon, F-IIBEC, RRC, PE (2020)**

**Walter J. Rossiter Jr., PhD, F-IIBEC, RRC, AIA (2020)**

**Jean-Guy Levaque, F-IIBEC, RRC, RRO (2022)**

**Warren French, F-IIBEC, RBEC, PE (2021)**

**William "Bill" Waterston, F-IIBEC, RRC, AIA (2023)**

**Johann "John" Willers, F-IIBEC, RRC, PE (2024)**

**Edward "Ted" Sheridan, F-IIBEC, RBEC, RRC, REWC, RWC, PEng (2025)**



## Emerging Professionals Award of Excellence

Awarded to an individual under 40 or within the first 10 years of

their career who has shown exceptional leadership, professionalism, and/or industry contribution in the profession of building enclosure consulting.

**Jeffrey C. Garrison, RRC, RWC, PE, CCCA, CEI (2014)**

**Jonathan Cannon, RRC, REWC, RRO, REWO, CDT (2015)**

**Szymon Zienkiewicz, RBEC, RRC, RWC, REWC, RRO, PE (2016)**

**Kenrick Hartman, RBEC, RRC, RWC, REWC, PE, LEED AP BD+C (2017)**

**Jennifer S. Hogan, REWC, RRO, LEED AP, CPHC (2018)**

**Julie E. McDonald, RRC, REWC, CIT (2019)**

**Jordan E. Crump, RRO, REWO (2020)**

**Stephanie Robinson, BASc, PEng (2021)**

**Charles T. Sietmann, RRC, RRO, REWO, CCCA, CIT (2022)**

**Anthony K. Dukes, RRC, RRO, PE (2023)**

**Justin Bell, RBEC, RRC, RWC, REWC, RRO, REWO, CDT (2024)**

**Sean Campbell, RRO (2025)**



## William C. Correll Exemplary Service Award

The William C. Correll Award honors IIBEC pio-

neer and first executive director William C. Correll Sr., F-IIBEC, AIA. In 2023, the award criteria was modified, and the award is now presented to an IIBEC staff member who has demonstrated a high degree of professionalism, leadership, ethics, and unselfish dedication or significant contribution to the growth and recognition of IIBEC.

**Justin Henshell, FAIA, FASTM (2008)**

**Richard Fricklas (2009)**

**Kristen Ammerman (2014)**

**Lyle D. Hogan, F-IIBEC, RRC, PE (2014)**

**Warren R. French, F-IIBEC, RBEC, PE (2015)**

**Albert Duwyn, F-IIBEC, RRC (2017)**

**Patrick L. Downey, F-IIBEC, RRC, CCCA (2018)**

**Micki Kamszik (2018)**

**Brian Gardiner, F-IIBEC, RRC, CCS (2019)**

**Richard Wagner, RRC, CCS (2019)**

Karen McElroy (2020)  
Brian “Rick” Craig, F-IIBEC,  
RRC, RRO (2020)  
David Balistreri, RRC (2022)  
Betty Quan (2024)



### **Richard M. Horowitz Award**

Named in honor of IIBEC  
past president and driv-  
ing force behind *IIBEC*

*Interface*, this award is presented for the  
best technical article published in *IIBEC*  
*Interface* within the previous year.

Colin Murphy, F-IIBEC, RRC (1996)  
Lyle D. Hogan, F-IIBEC, RRC, PE (1997)  
Charles “Chuck” Marvin, RRC (1998)  
Gerard J. Teitsma,  
F-IIBEC, RRC, RRO, CCCA (1999)  
Robert Haddock (2000)  
Steven Murray (2001)  
William A. Kirn, RRC (2002)  
Raymond L. Corbin & Lyle D. Hogan,  
F-IIBEC, RRC, PE (2003)  
Donald Kilpatrick (2004)  
Kamran Farahmandpour,  
RRC, RWC, PE, CCS (2005)  
Joseph L. “Cris” Crissinger,  
CCS, CCCA (2006)  
Karl Schaack, RRC, PE (2007)  
Joseph L. “Cris” Crissinger,  
CCS, CCCA (2008)  
Matthew C. Farmer, PE (2009)  
Lyle D. Hogan, F-IIBEC, RRC, PE (2010)  
David Campbell, RWC, AIA (2011)  
Justin Henshell, FAIA, FASTM,  
& Paul Buccellato, RWC,  
FASTM, AIA (2012)  
Sarah Flock, AIA, & Garth Hall, AIA (2013)  
Scott Wood (2014)  
Karl Schaack, RRC, PE (2015)  
Rick Ziegler, RRO, PE; & Clark  
Denson, PE, CEM, BEMP (2016)  
Patrick J. Conway (2017)  
Kip Gatto, PE, SE, & Grace Wong,  
PE, RA, LEED AP BD+C (2018)  
Todd Skopic, CDT, LEED AP (2019)  
Mary Arntzen, PE (2020)  
Derek McCowan, PE (2020)  
Appupillai Baskaran, PhD,  
F-IIBEC, PEng (2021)

Sudhakar Molleti (2021)  
Violet LaBrosse, AIA, & Jason  
Wilens, RRO, AIA, CDT (2022)  
Corey Wowk, AIA, LEED AP (2023)  
Leonidia Garbis, PE, LEED  
Green Associate (2023)  
Paul Buccellato, F-IIBEC, RWC,  
REWC, FASTM, AIA (2024)  
Karl Schaack, F-IIBEC, RRC, PE (2025)



### **Joshua J. Summers Outstanding Educator Award**

Renamed in 2020 in  
memory of longtime

IIBEC Education Committee Chair Joshua  
Summers, this award is presented to IIBEC  
members in recognition for exemplary  
service to IIBEC education on an institute  
and/or chapter level.

Alan Spaite, PE (2013)  
Kamran Farahmandpour, F-IIBEC,  
RBEC, RRC, RWC, REWC,  
PE, CCS, CCCA (2013)  
Raymond C. Wetherholt, F-IIBEC, RBEC,  
RRC, RWC, REWC, PE (2013)  
Robert D. Card, F-IIBEC, RBEC, RRC,  
RWC, REWC, REWO (2013)  
Gerard “Jerry” Teitsma, F-IIBEC,  
RRC, RRO, CCCA (2013)  
Richard L. Cook Jr., F-IIBEC, RBEC,  
RRC, RWC, REWC, REWO, RRO,  
CCS, LEED, CSRP, SC ACEM (2013)  
Richard “Dick” Fricklas, F-IIBEC (2013)  
Raymond Ramos, RRC, PE (2017)  
D. Keith K. Davis, RBEC (2017)  
Patrick L. Downey, F-IIBEC,  
RRC, CCCA (2017)  
Brian Gardiner, F-IIBEC, CCS (2017)  
Charles L. Smith Jr. (2017)  
Joshua J. Summers, REWC, SE, PE (2017)  
Paul Buccellato, F-IIBEC, RWC,  
REWC, FASTM, AIA (2018)  
Edwin L. Williams Jr., RRC (2018)  
Jerry Abendroth, RBEC, RRO, CDT (2020)  
Emily Lorenz, PE (2021)



### **Herbert Busching Memorial Award**

Named for long-time  
member and first chair  
of IIBEC’s Board of  
Regents, the Herbert

Busching Memorial Award is awarded to  
individuals who have contributed to the  
research, standards, and education of the  
roofing, waterproofing, and/or exterior wall  
industries.

William C. Correll, F-IIBEC, AIA (1994)  
Richard Canon, F-IIBEC, PE, RRC (1996)  
Colin Murphy, F-IIBEC, RRC (1998)  
Michael Blanchette, F-IIBEC,  
RRC, RRO (2000)  
Joe Hale, F-IIBEC (2001)  
Donald E. Bush Sr., F-IIBEC, RRC (2004)  
Gerard Teitsma, F-IIBEC, RRC,  
RRO, CCCA (2009)  
Appupillai “Bas” Baskaran, PhD,  
F-IIBEC, PEng (2014)  
André Desjarlais, FASTM (2014)  
Walter Rossiter, PhD, F-IIBEC (2014)  
Wanda Edwards, PE (2017)  
Elizabeth J. Grant, PhD, RA (2021)  
Kamran Farahmandpour, F-IIBEC,  
RBEC, RRC, RWC, REWC,  
PE, CCS, CCCA (2022)  
Paul Buccellato, F-IIBEC, RWC,  
REWC, FASTM, AIA (2022)  
Emily Lorenz, PE (2023)  
Doug Stieve, RRC, AIA (2023)  
Michael L. Goolsby, RRC, CDT,  
LEED BD+C CBO (2023)  
Madan Mehta, PE (2025)  
Stephen Patterson, F-IIBEC,  
RRC, PE (2025)

# IIBEC HONOREES



## IIBEC JURY OF FELLOWS

The designation of “Fellow” is an honorary title bestowed upon individuals who have demonstrated meritorious service. IIBEC, strengthened by its officers and volunteers, has recognized certain persons in this manner (see Article 19 of IIBEC’s bylaws). Recipients of the “Fellow” designation (F-IIBEC) to date are the following:

William C. Correll, AIA (1986)	David R. Hawn, RRC, CEM (2010)
Robert W. Lyons (1986)	William Rubel, RRC (2010)
Dr. Herbert W. Busching, PE (1987)	Robert Elsdon, RRO (2011)
Richard P. Canon, RRC, PE (1987)	Richard L. Cook Jr., RBEC, RRC, RWC, REWC, CCS, CSRP (2012)
Robert Phillips Jr., RRC (1988)	Arthur “Chip” Ward, RRC (2013)
D.B. “Ben” Hales, RRC (1989)	Raymond C. Wetherholt, RBEC, RRC, RWC, REWC (2013)
George F. Kanz, RRC (1990)	Edward L. Arnold, RRC, RWC (2014)
Richard M. Horowitz, AIA, RRC (1990)	Richard “Dick” Fricklas (2014)
James E. Magowan, RRC (1991)	Thomas M. Gernetzke, RBEC, RRC, RWC, REWC (2014)
Donald E. Bush Sr., RRC (1992)	Dennis J. McNeil, RRC, RRO, CCS (2014)
Joe F. Hale (1992)	Brian Gardiner, RRC, CCS (2015)
Barry S. Krum (1993)	Sidney I. Hankins III, RRC, AIA (2015)
Robert Martin, RRC (1993)	Brian R. “Rick” Craig, RRC, RRO (2016)
Sam Huff, RRC (1994)	Samir Ibrahim, AIA (2016)
Lyle D. Hogan, RRC, PE (1994)	Jean-Guy Levaque, RRC, RRO (2016)
John L. Willers, RRC, PE (1995)	Robért J. Hinojosa, RBEC, RRC, RWC, REWC, RRO, PE, CDT (2017)
Arthur O. Sark, RRC (1996)	Gerard J. Teitsma, RRC, RRO, CCCA (2017)
Dave H. Siple, RRC (1996)	Michael L. Williams, RRC, RWC, RRO (2018)
Phil Dregger, RRC, PE (1997)	Paul Buccellato, RWC, REWC, FASTM, AIA (2018)
Robb Smith, RRC, RRO (1998)	Michael E. Clark, RBEC, RRO, PE, CSRP, CxA+BE, BECxP (2019)
Michael Blanchette, RRC, RRO (1999)	Appupillai “Bas” Baskaran, PhD, PEng (2020)
William Cypher, RRC (1999)	Robert D. Card, RBEC, RRC, RWC, REWC, REWO (2020)
Matt Hitlin (2000)	Walter J. Rossiter Jr., PhD, F-IIBEC (2020)
James “J.P.” Sheahan, RRC (2000)	Scott Hinesley, RRC, PE (2021)
Colin Murphy, RRC (2001)	Derek Hodgins, F-IIBEC, RBEC, RRO, PE, CDT (2021)
George Criel, RRC (2002)	Edward Sheridan, RBEC, RRC, REWC, RWC, PEng (2022)
Warren R. French, RRC, PE, CCS (2002)	Karl Schaack, RRC, PE (2022)
Michael DeFrancesco, RRC (2003)	William Waterston, RRC, AIA (2023)
Albert Duwyn, RRC (2003)	Chris Giffin, RRC, AIA (2023)
W. Nelson Hall, RRC (2004)	Amy Peevey, REWC, RRO, PE, CDT (2024)
Luther C. Mock, RRC (2005)	Marc Caputo, RRC, LEED AP (2024)
Helene Hardy Pierce (2005)	Paul Kompauer, PE (2025)
Thomas Hutchinson, RRC, AIA (2006)	Doug Stieve, RRC, AIA (2025)
Gary R. Cattel, RRC, PE (2007)	Stephen Patterson, RRC, PE (2025)
Patrick L. Downey, RRC, CCCA (2008)	
Kamran Farahmandpour, RRC, RWC, REWC, PE, CCS (2010)	



Project Excel, IIBEC's professional mentorship program, is designed to benefit both mentors and mentees at any stage in their career. Build social capital through networking, the sharing of professional resources, and career development coaching. **Do something great.**

[iibec.org/project-excel](http://iibec.org/project-excel)



PROFESSIONAL DEVELOPMENT IS  
ONGOING THROUGHOUT  
AN INDIVIDUAL'S CAREER.



## Celebrating the Year's Most Innovative Projects

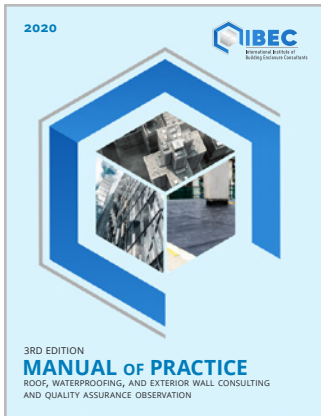
The EBEC Awards recognize the year's outstanding contributions to the design, delivery, and advancement of building enclosure performance.



Apply at [iibec.org/ebec](http://iibec.org/ebec)



# BOOKSTORE BEST SELLERS

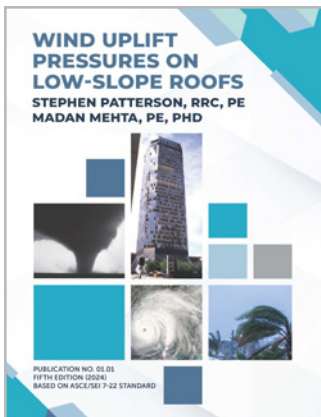


## IIBEC Manual of Practice — Roofing, Waterproofing, and Exterior Wall Consulting and Quality Assurance Observation

The 3rd edition of the *IIBEC Manual of Practice (MOP)* provides a peer-reviewed structure for the practice of consulting in the construction of the building enclosure. In simple terms, it describes what a professional consultant does and how the consultant does it. It is recognized that consultants may utilize professional judgment as the basis for modifying the procedures presented in this manual.

With over 300 pages of information, photos, graphics, and fillable forms, the *MOP* provides recommended best practices in all areas of building enclosure consulting, including specialized areas such as commissioning, testing, and expert witness services.

**IIBEC MEMBERS:** DIGITAL: \$349.00 | PRINT: \$399.00  
**NONMEMBERS:** DIGITAL: \$429.00 | PRINT: \$459.00



## Wind Uplift Pressures on Low-Slope Roofs

(Revised 2024)

**AUTHORS:** STEPHEN L. PATTERSON, RRC, PE; AND MADAN MEHTA, PE, PHD

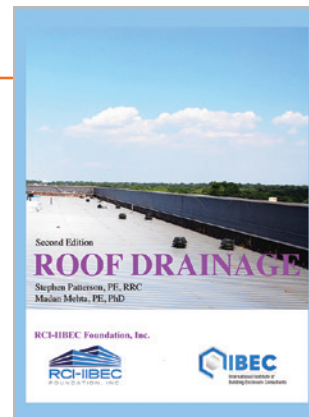
The most significant wind-related revision in ASCE 7-22 is the addition of an entirely new chapter (Chapter 32) that deals with tornado winds. Until the publication of ASCE 7-22 Standard (i.e., up to ASCE 7-16 Standard), tornado winds were not considered for the design of buildings and other structures except for critical structures, such as the nuclear facilities, or tornado shelters. Several years of research on tornadoes and the data collected therefrom, have revealed that the number of fatalities and the property losses from tornadoes far exceed those from hurricanes and earthquakes combined.

A new chapter (Chapter 6) on tornado wind pressures has been added in this (fifth) edition of the monograph. A brief discussion of other wind-related revisions in ASCE 7-22 Standard applicable to low-slope roofs is given in Section 1.7 and elaborated in the relevant chapters.

*A publication of the RCI-IIBEC Foundation.*  
*Perfect-bound: 182 pages.*

**IIBEC MEMBERS:**  
DIGITAL: \$55.00  
PRINT: \$65.00

**NONMEMBERS:**  
DIGITAL: \$79.00  
PRINT: \$89.00



## Roof Drainage, Second Edition

(Revised 2024)

**AUTHORS:** STEPHEN L. PATTERSON, RRC, PE; AND MADAN MEHTA, PE, PHD

According to Patterson and Dr. Mehta, “In this edition, we are responding to an unprecedented change in roof drainage design from what has been used for more than a half century. Until recently, the plumbing codes assumed that the flow through a roof drain is the same as the flow through a vertical leader of the same diameter. Several investigations and roof-collapse forensics have shown that our assumption has been incorrect.

“This monograph has been written as a textbook to serve all three disciplines—architecture, plumbing engineering, and structural engineering. We have learned a great deal since the 2003 publication and have incorporated it into this book.”

*A publication of the RCI-IIBEC Foundation.*  
*150 pages*

**Available in digital and print.**

**IIBEC MEMBERS:**  
DIGITAL: \$59.00  
PRINT: \$75.00

**NONMEMBERS:**  
DIGITAL: \$79.00  
PRINT: \$95.00

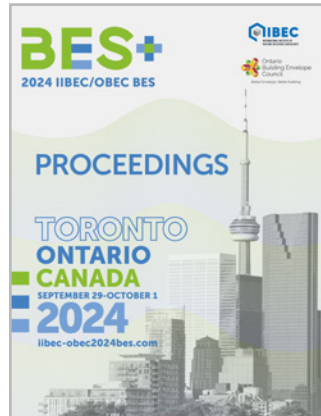
# PROCEEDINGS



## Proceedings: 2024 IIBEC International Convention and Trade Show

The 2024 IIBEC International Convention and Trade Show Proceedings includes 20 articles in a full-color, perfect bound, print-on-demand book.

**IIBEC MEMBERS: \$59.00**  
**NONMEMBERS: \$69.00**



## 2024 IIBEC/OBEC BES Proceedings

The print edition of the 2024 IIBEC/OBEC Proceedings includes 17 articles in a full-color, perfect-bound, print-on-demand book.

**IIBEC MEMBERS: \$59.00**  
**NONMEMBERS: \$69.00**



## Proceedings: 2025 IIBEC International Convention and Trade Show

The print edition of the 2025 IIBEC International Convention and Trade Show Proceedings includes 21 articles in a full-color, perfect-bound, print-on-demand book.

**IIBEC MEMBERS: \$59.00**  
**NONMEMBERS: \$69.00**

# DRIVE DOWN

## YOUR



\*Consult your tax advisor.



Donate your car or property today and enjoy tax benefits\* while also supporting the RCI-IIBEC Foundation! (Sorry, US only)

### Donate Your Car

[careasy.org/nonprofit/rci-iibec-foundation-inc](http://careasy.org/nonprofit/rci-iibec-foundation-inc)

### Donate Your Property

[rci-iibecfoundation.givingproperty.org/home](http://rci-iibecfoundation.givingproperty.org/home)

**WE WANT  
YOUR  
ARTICLES!**



Do you have a story to tell about your experience with a building enclosure project?

**TELL IT IN *IIBEC INTERFACE*!**

The industry's premier publication wants your stories, case studies, and project profiles. Submit them today to Executive Editor Christian Hamaker at [chamaker@iibec.org](mailto:chamaker@iibec.org).

Find a list of upcoming deadlines along with an editorial focus for each issue at [iibec.org/hub/interface](http://iibec.org/hub/interface).

**DON'T WAIT! SUBMIT TODAY!**





# IIBEC STAFF CONTACT INFORMATION



NAME	TITLE	EMAIL	DIRECT PHONE NUMBER
<b>Executive Office</b>			
Brian Pallasch, CAE	Executive Vice President and CEO	bpallasch@iibec.org	(919) 551-6206
Melany Rizzo, CAE	Chief Operating Officer	mrizzo@iibec.org	(919) 551-6217
Carolyn Baber, SHRM-CP	Manager of Human Resources and Board Operations	cbaber@iibec.org	(919) 551-6208
Laura Kury	Operations Specialist	lkury@iibec.org	(919) 551-6205
<b>Membership &amp; Credentialing</b>			
Alexander Jeffries	Vice President of Membership & Credentials	ajeffries@iibec.org	(919) 551-6202
Heidi Arsenault	Manager of Credentials	harsenault@iibec.org	(919) 551-6224
Simone Patterson	Credentials Specialist, Applications	spatterson@iibec.org	(919) 551-6218
Tiffany Camperos-Brizuela	Credentials Specialist, Onboarding and Renewals	tcamperos@iibec.org	(919) 551-6210
Amanda Littlejohn	Membership Development Specialist	alittlejohn@iibec.org	(919) 551-6213
<b>Chapter Relations</b>			
Tara Cottle	Director of Chapter Relations & Website Content	tcottle@iibec.org	(919) 551-6220
<b>Publications &amp; Communications</b>			
Christian Hamaker	Director of Publications and Communications	chamaker@iibec.org	(919) 551-6215
<b>Meetings &amp; Events</b>			
Mendy Howard	Director of Events & Meetings	mhoward@iibec.org	(919) 551-6207
Caroline Cummings	Meeting & Event Specialist	ccummings@iibec.org	(919) 551-6204
<b>Education</b>			
Kristen Kennedy	Director of Education	kkennedy@iibec.org	(919) 551-6226
Mandy Bell	Manager of Education	abell@iibec.org	(919) 551-6209
Brandi Matlock	IIBEC Education Specialist	bmatlock@iibec.org	(919) 859-0742
Samir Ibrahim	Education Advisor	jabendroth@iibec.org	(919) 551-6221
<b>Marketing &amp; Sales</b>			
Arisa Cooper	Director of Marketing & Sales	acooper@iibec.org	(919) 551-6211
<b>Technical Activities</b>			
Emily Lorenz, PE, F-ACI	Codes and Standards Advisor	elorenz@iibec.org	(919) 551-6212
<b>Public Policy &amp; Industry Relations</b>			
Open	Director, Advocacy & Industry Relations	info@iibec.org	800-828-1902
<b>RCI-IIBEC Foundations</b>			
Rick Gardner	RCI-IIBEC Foundation, Development Officer	rgardner@iibec.org	(919) 551-6227

Main Office: (919) 859-0742 | Toll-Free Main Office: (800) 828-1902 | Fax: (919) 859-1328

## ADVERTISERS' INDEX

Advertiser	Contact	Website	Page
Whitco Roofing, Inc.....	support@whitcoroofing.com or 1-888-399-2221 .....	whitcoroofing.com .....	21
Siplast .....	usinfo@siplast.com or 1-800-922-8800 .....	siplast.com .....	Inside Back Cover

# APPLICATION FOR MEMBERSHIP



Name	Informal Name	Credentials (eg., PE)
Company	Date of Birth	
Address	Telephone	
City, State, ZIP	Fax	
Parent Company (if different)	Email Address	
Website Address		
Referred by	Membership ID of Referring Individual	

## CLASSIFICATION

Indicate the classification of membership for which you are applying.

- ☐ **CONSULTANT** – Consultant members shall be those individuals who are practicing consultants, architects, or engineers. They shall not be employees or principals of any business entities controlling or directing the application, manufacture, distribution, sales, or marketing of roofing, waterproofing, and/or exterior wall products and services, and shall have no conflict of interest as defined in Article 16 of the IIBEC bylaws. Consultant members shall be eligible to vote, serve on committees, and hold any office of IIBEC. **\$545.00**
- ☐ **INDUSTRY** – Industry members shall be those individuals who are employees or principals of any business entity directing and controlling the application, manufacture, distribution, sales, or marketing of roofing, waterproofing, and/or exterior wall products and services. Industry members shall not be eligible to vote or hold office unless they are Registered Roof Consultants who attained registration prior to March 1, 1995. They may, however, serve on committees. **\$635.00**
- ☐ **QUALITY ASSURANCE OBSERVER** – Quality Assurance members shall be independent quality observers. They shall not be employees or principals of any business entities controlling or directing the application, manufacture, distribution, sales, or marketing of roofing, waterproofing, and/or exterior wall products and services and shall have no conflict of interest as defined in Article 16 of the IIBEC bylaws. Quality Assurance members shall not be eligible to vote or hold office but may serve on committees. **\$395.00**
- ☐ **FACILITY MANAGER** – Facility Manager members shall be those individuals whose professional responsibilities include management, development, or maintenance of buildings, both public and private. Facility Manager members shall not be eligible to vote or hold office but may serve on committees. **\$235.00**
- ☐ **ASSOCIATE** – Associate members shall be those individuals who are not actually within the roofing, waterproofing, and/or exterior wall industries, such as educators and employees of business concerns or government agencies, but who share an interest in the activities of IIBEC. Associate members shall not be eligible to vote or hold office, but they may serve on committees. **\$395.00**
- ☐ **STUDENT** – Student members shall be full-time undergraduate or graduate students majoring in a construction-related curriculum in an educational institution. Student members shall not be eligible to vote or hold office, but they may serve on committees. **\$185.00**

The prices above reflect the 2025 schedule. Payable in US funds.

## SPECIALTIES

Please check only those services you **individually provide**.\* Membership is individually based and nontransferable.

- |  |   |   |  |
|--|---|---|--|
| <input type="checkbox"/> A. Roof Consulting          | <input type="checkbox"/> E. Witness/Legal Involvement | <input type="checkbox"/> I. Education           | <input type="checkbox"/> M. Residential                      |
| <input type="checkbox"/> B. Waterproofing Consulting | <input type="checkbox"/> F. Contracting               | <input type="checkbox"/> J. Specifying          | <input type="checkbox"/> N. Inspections                      |
| <input type="checkbox"/> C. Exterior Wall Consulting | <input type="checkbox"/> G. Manufacturing             | <input type="checkbox"/> K. Student             | <input type="checkbox"/> O. Building Enclosure Commissioning |
| <input type="checkbox"/> D. Materials Testing        | <input type="checkbox"/> H. Materials Sales           | <input type="checkbox"/> L. Property Management |  |


\*IIBEC is not responsible for verification of services listed by a member.

By payment of membership dues with IIBEC, the individual understands and acknowledges that they will abide by the IIBEC Code of Ethics; failure to do so may subject them to disciplinary proceedings and sanctions.

## PAYMENT METHOD

- |  |  |                        |
|--|--|------------------------|
| <input type="checkbox"/> Visa                          | <input type="checkbox"/> MC                  | Card #: _____          |
| <input type="checkbox"/> AmEx                          | <input type="checkbox"/> Discover            | Expiration Date: _____ |
| <input type="checkbox"/> Check (Made payable to IIBEC) | 3- or 4-Digit Verification Value Code: _____ | Signature: _____       |

Return with payment to: IIBEC, 434 Fayetteville Street, Suite 2400, Raleigh, NC 27601 • Phone: 919-859-0742



# Reimagine the roof as a landscape of possibilities



With you every step of the way

When you partner with Siplast, your vegetated roofing vision blooms — literally. Our broad product and assembly portfolio enables you to specify with confidence that your membrane selection will integrate seamlessly with your design and sustainability goals. Count on Siplast vegetated roof, amenity deck, and stormwater solutions for seamless integration, comprehensive guarantees\*, and support at all stages of your project.

\* For qualified systems only. Additional requirements apply. Contact Siplast for more information. Refer to the applicable guarantee or warranty, available at [siplast.com](https://www.siplast.com), for complete coverage and restrictions.



Scan here





434 Fayetteville St., Suite 2400  
Raleigh, NC 27601

© 2025 by the International Institute of Building Enclosure Consultants