



## Quantified, Objective Exterior Wall Expertise

REWCs have demonstrated the knowledge, skills, and abilities to provide impartial, informed consulting and documentation related to the investigation, design, construction, repair, testing, and codes and standards of exterior wall systems.

The REWC has proficient knowledge of wall drainage systems, different exterior wall cladding systems, fenestration assemblies, proper selection of sealants, and forces imposed on exterior wall systems.

## Why an REWC?

- REWC's knowledge is quantified through computer-based examination, character reference, and verified experience.
- REWCs are committed to annual continuing education requirements, and they follow an established code of ethics for objectivity of service.
- REWCs contribute to long-lived, successful exterior wall installations.

## Expertise

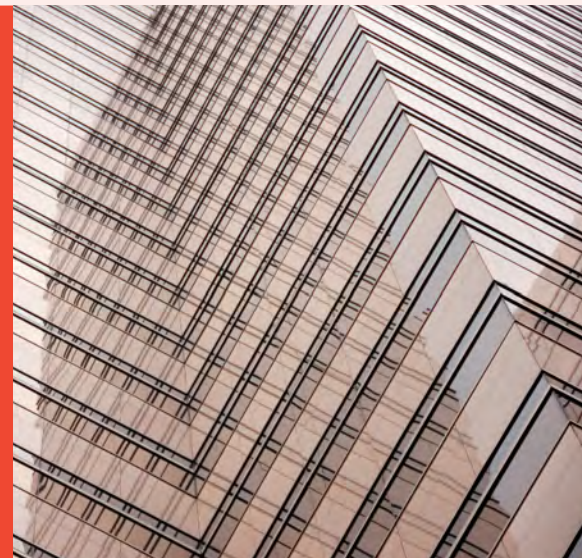
**Failure Investigations.** REWCs conduct evaluations of exterior walls to identify current performance deficiencies and to discover potential failure points.

**Specification.** REWCs offer recommendations for exterior wall systems solutions for both new and existing structures.

**Asset Management.** REWCs establish asset management programs that monitor systems performance. Issues are addressed before they require costly repairs.

**Repairs/Remediation.** REWCs determine if repair or replacement of materials is needed.

**Quality Assurance and Expert Testimony.** REWCs have knowledge of manufacturer warranty terms, and they ensure materials are installed in accordance with requirements. Should a warranty issue arise, they provide support for the owner, and can serve as expert witnesses in construction litigation.



## Exterior Wall Experts with Verified Knowledge and Experience



## Objectivity and Commitment

Each REWC agrees to abide by the IIBEC Code of Ethics. Specifically, REWCs pledge to be truthful about their professional qualifications and performance, and they agree to provide unprejudiced and unbiased judgment and they conduct when performing all professional services.

## Prequalification

Before taking the REWC exam, potential candidates must substantiate established exterior wall knowledge and prove they have met benchmarks for communication skills, work experience, and matters of character and ethics.

## Examination Process

The REWC examination process features two separate exams totaling 150 questions designed to gauge the applicant's proficiency.

To receive the REWC credential, the examinee must prove proficient understanding of codes and standards, exterior wall materials and their inherent properties, thermal movement, vapor transmission, insulation, testing methods, quality assurance, safety assessment skills, and more.

To maintain their credential, REWCs must annually complete a minimum of 12 hours of relevant continuing education.



Learn about IIBEC credential programs at [IIBEC.org/credentials](https://www.iibec.org/credentials)

