

Condition Assessment

The following photographs were taken on 10/18/21 to document the in-service conditions at the reported leak locations.



*Photo #1: Chipped paint on drywall along the top of the window rough opening at leak location #1.*



*Photo #2: Chipped paint on drywall at the bottom of the window jamb rough opening at leak location #1.*



*Photo #3: Chipped paint on drywall at the bottom of the window jamb rough opening at leak location #2.*



*Photo #4: Chipped paint on drywall along the window jamb rough opening at leak location #2.*



*Photo #5: Stains on the drywall directly below the window at leak location #2.*



*Photo #6: Chipped paint on drywall at the bottom of the window jamb rough opening at leak location #3.*



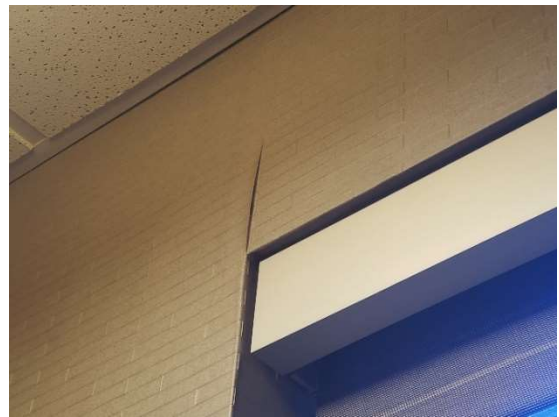
*Photo #7: Drip marks on the bottom side of the horizontal steel tubing at leak location #3.*



*Photo #8: Wallpaper peeling below the window at leak location #5.*



*Photo #9: Wallpaper discoloration adjacent to the window at leak location #5.*



*Photo #10: Wallpaper peeling above the window at leak location #5.*



*Photo #11: Chipped/peeling paint on drywall at leak location #6.*



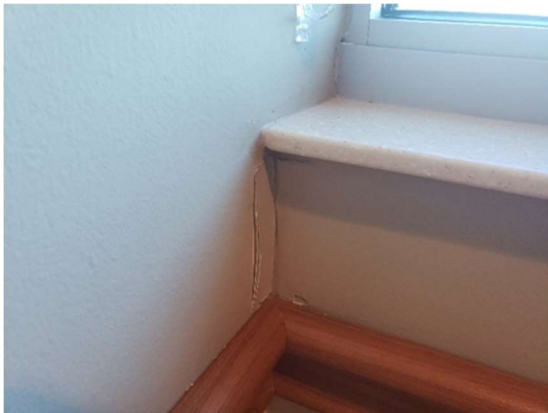
*Photo #12: Stains on drywall at leak location #6.*



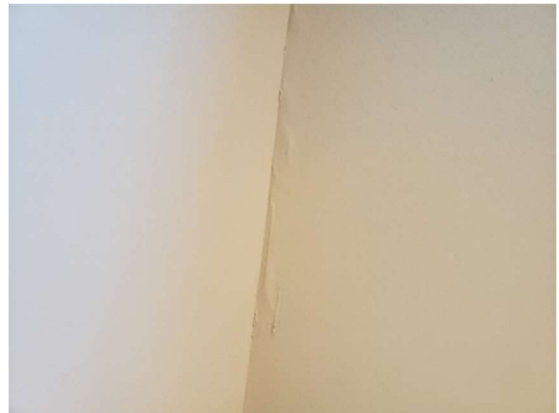
*Photo #13: Stains on drywall at leak location #7.*



*Photo #14: Stains on drywall at leak location #8.*



*Photo #15: Chipped paint on drywall at the bottom of the window jamb rough opening at leak location #9.*



*Photo #16: Signs of drywall deterioration directly below the window at leak location #9.*



*Photo #17: Chipped paint on drywall at the bottom of the window jamb rough opening at leak location #10.*



*Photo #18: Chipped paint on drywall at the bottom of the window jamb rough opening at leak location #10.*





*Photo #19: Presumable drywall repair at the bottom of the window jamb rough opening at leak location #11.*



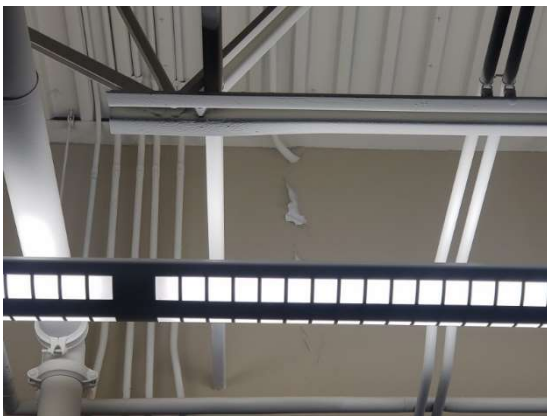
*Photo #20: Stain on the ceiling tile directly above the window at leak location #11.*



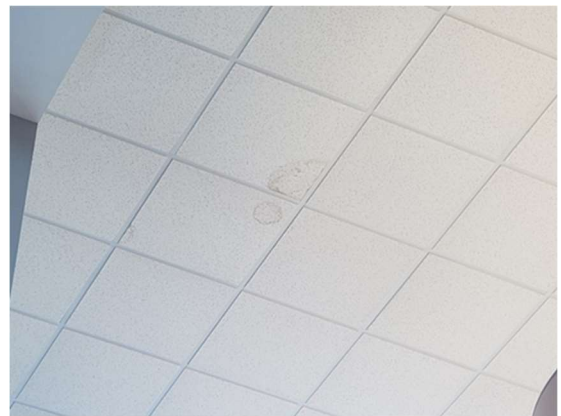
*Photo #21: Presumable drywall repair at the bottom of the window jamb rough opening at leak location #12.*



*Photo #22: Chipped paint on drywall along the spandrel beam at leak location #13.*



*Photo #23: Chipped/peeling paint on drywall at leak location #13.*



*Photo #24: Stains on the ceiling tiles at leak location #15.*



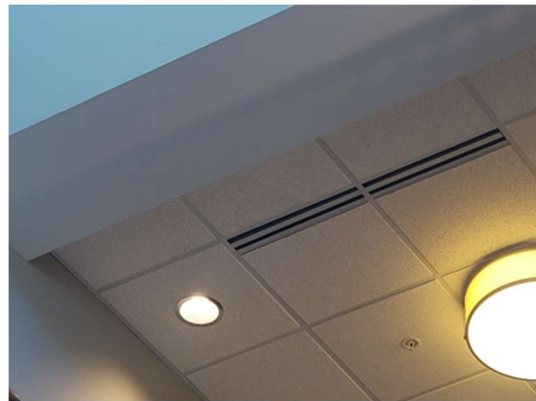
*Photo #25: Stains on the ceiling tiles at leak location #16.*



*Photo #26: Stains on the ceiling tiles at leak location #17.*



*Photo #27: Stains on the ceiling tiles at leak location #18.*



*Photo #28: Stains on the ceiling tiles at leak location #19.*



*Photo #29: Stains on the ceiling tile at leak location #20.*



*Photo #30: Stains on the ceiling tiles at leak location #21.*

Condition Assessment

The following photographs document the in-service conditions of the brick veneer.



*Photo #74: View of orange/red staining and white residue on the brick (west elevation, north of lobby, 10/18/21).*



*Photo #75: View of orange/red staining and white residue on the brick (west elevation, south of lobby, 10/18/21).*





*Photo #76: View of orange/red staining and white residue on the brick (west elevation, gymnasium, 10/18/21).*



*Photo #77: View of orange/red staining and white residue on the brick (north elevation, stairwell, 1/12/22).*



*Photo #78: View of orange/red staining, white residue, and discolored brick (southwest corner, 10/18/21).*



*Photo #79: View of orange/red staining and white residue on the brick (east elevation, 10/18/21).*





*Photo #80: View of dark residue on the mortar (north elevation, gymnasium, 1/12/22).*

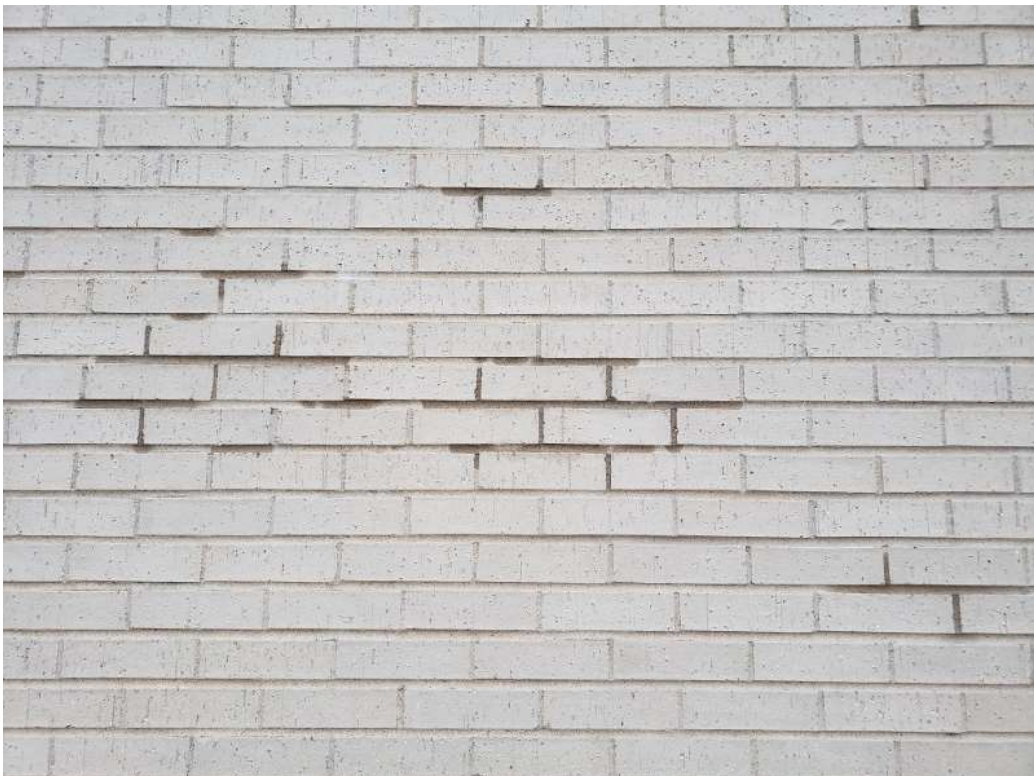


*Photo #81: View of dark residue on the mortar (north elevation, gymnasium, 10/18/21).*





*Photo #82: Close-up view of orange/red staining on the brick (north elevation, stairwell, 10/18/21).*



*Photo #83: Close-up view of mortar that appears to be wet (north elevation, gymnasium, 1/12/22).*





*Photo #84: Close-up view of orange/red staining on the brick (west elevation, gymnasium, 1/11/22).*



*Photo #85: Close-up view of orange/red staining and white residue on the brick (west elevation, gymnasium, 1/11/22).*



*Photo #86: Close-up view of orange/red staining on the brick (west elevation, gymnasium, 1/11/22).*



*Photo #89: Close-up view of orange/red staining on the brick (west elevation, gymnasium, 1/11/22).*



*Photo #87: Close-up view of white residue on the brick (west elevation, gymnasium, 1/11/22).*



*Photo #90: Close-up view of white residue on the brick (west elevation, gymnasium, 1/11/22).*



*Photo #88: Close-up view of brick discoloration (south elevation, stairwell, 1/12/22).*



*Photo #91: Close-up view of brick discoloration (south elevation, stairwell, 1/12/22).*





*Photo #92: Close-up view of wet mortar (north elevation, gymnasium, 1/12/22).*



*Photo #95: Close-up view of wet mortar (north elevation, gymnasium, 1/12/22).*



*Photo #93: Close-up view of dark residue on the mortar (north elevation, gymnasium, 1/12/22).*



*Photo #96: Close-up view of white residue on the brick (north elevation, fitness area, 10/18/21).*



*Photo #94: Close-up view of white residue on the brick (north elevation, fitness area, 10/18/21).*



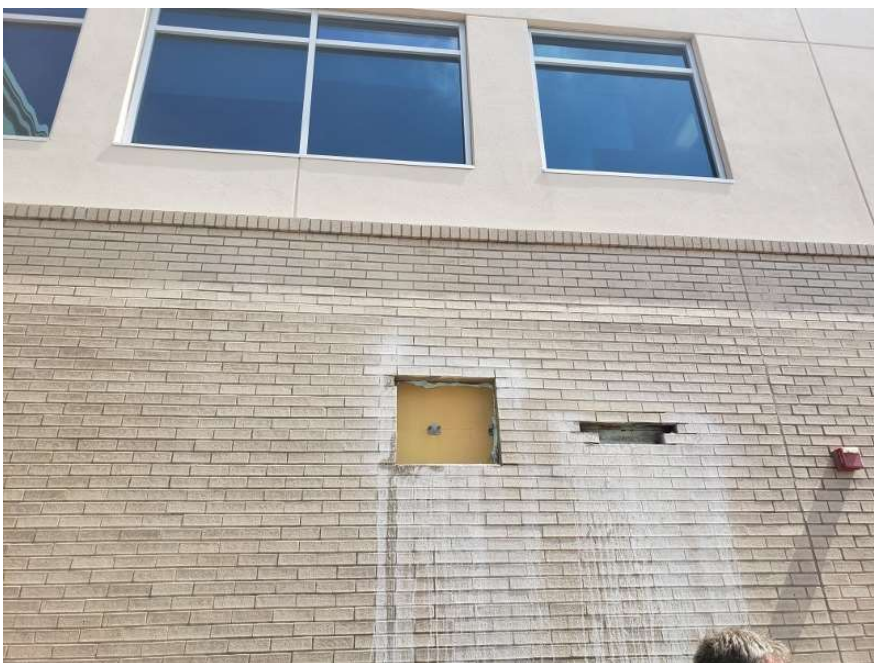
*Photo #97: Close-up view of white residue on the brick (north elevation, fitness area, 10/18/21).*

### Exploratory Openings

The photographs on the following pages document the as-built conditions observed at the exploratory opening locations. The next section of this report discusses the observations and findings from these exploratory openings.

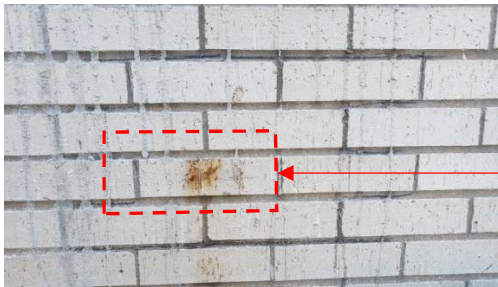


*Photo #98: View of exploratory opening locations (north elevation, fitness area, 1/12/22).*



*Photo #99: View of exploratory opening locations (west elevation, elevator controls, 3/27/23).*





*Photo #100: View of rust stain on brick surface, prior to exploratory opening (north elevation, fitness area, 1/10/22).*



*Photo #101: View of as-built condition after removal of a few brick units (north elevation, fitness area, 1/10/22).*



*Photo #102: Close-up view of corroded brick anchor tie (north elevation, fitness area, 1/10/22).*



*Photo #103: Close-up view of corroded brick wire (north elevation, fitness area, 1/10/22)*

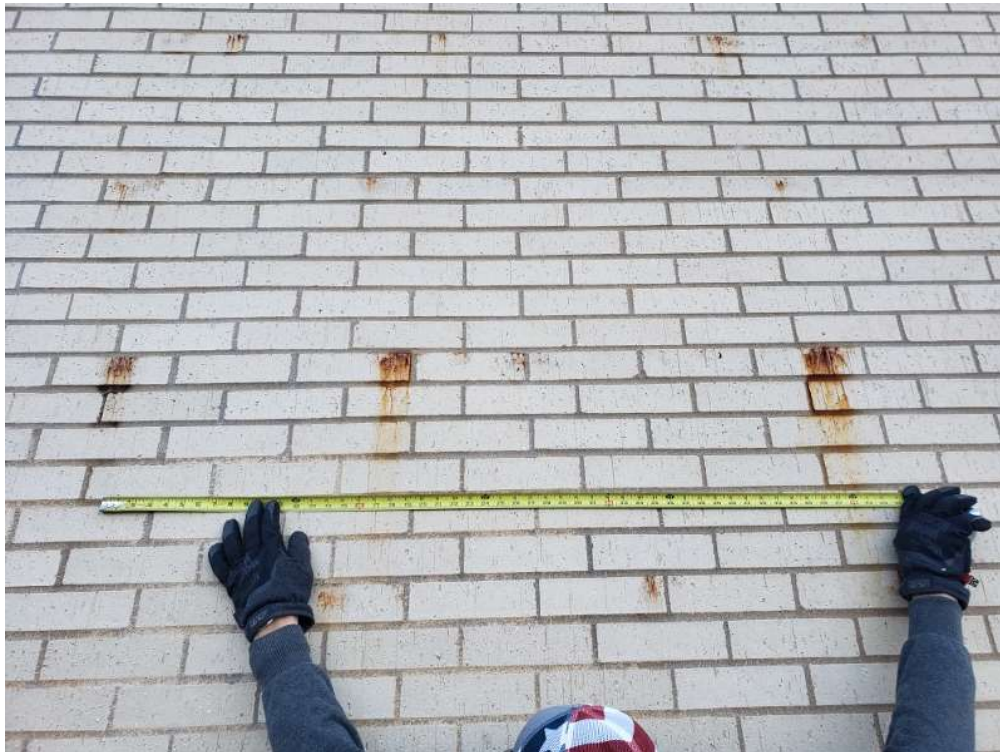


*Photo #104: View of rust stain on brick surface, prior to exploratory opening (west elevation, stairwell, 1/10/22).*



*Photo #105: Close-up view of corroded brick wire (west elevation, stairwell, 1/10/22).*





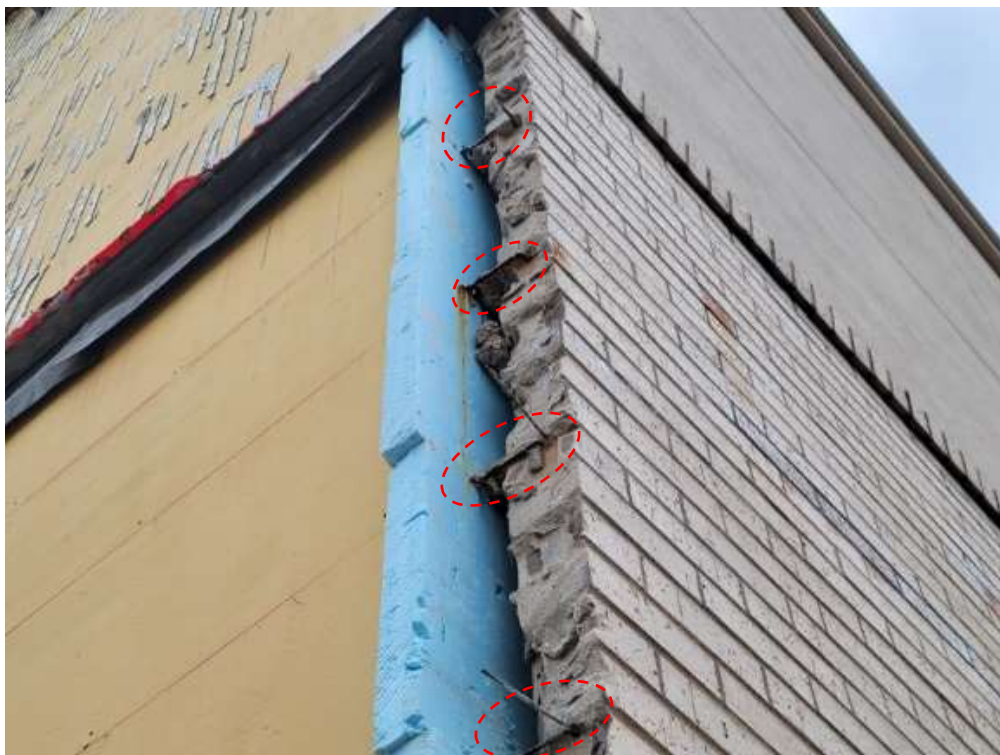
*Photo #106: Representative example of predominate rust stains at horizontal intervals of approximately 16" on-center (north elevation, stairwell, 1/12/22).*



*Photo #107: Representative example of brick anchor tie horizontal spacing of approximately 16" on-center (west elevation, stairwell, 1/12/22).*



*Photo #108: Representative example of predominate rust stains at vertical intervals of approximately 16" on-center, which was 6 mortar bed joints (north elevation, stairwell, 1/12/22).*



*Photo #109: Representative example of brick anchor tie and wire vertical spacing of approximately 16" on-center, which was 6 mortar bed joints (west elevation, stairwell, 7/19/23).*





*Photo #114: View underneath unsealed flashing membrane at the base-of-wall condition (north elevation, stairwell, 7/19/23).*



*Photo #115: Close-up view of water in brick cores at the base-of-wall condition (north elevation, stairwell, 7/19/23).*





*Photo #116: Underside view of a brick unit with a corroded brick anchor tie and wire, embedded in the mortar (north elevation, fitness area, 6/26/23).*



*Photo #117: Underside view of a brick unit with a corroded brick anchor tie and wire, embedded in the mortar (north elevation, fitness area, 6/26/23).*



*Photo #118: Rust stains on the top side of a brick unit after removal of the brick anchor tie (north elevation, fitness area, 6/26/23).*

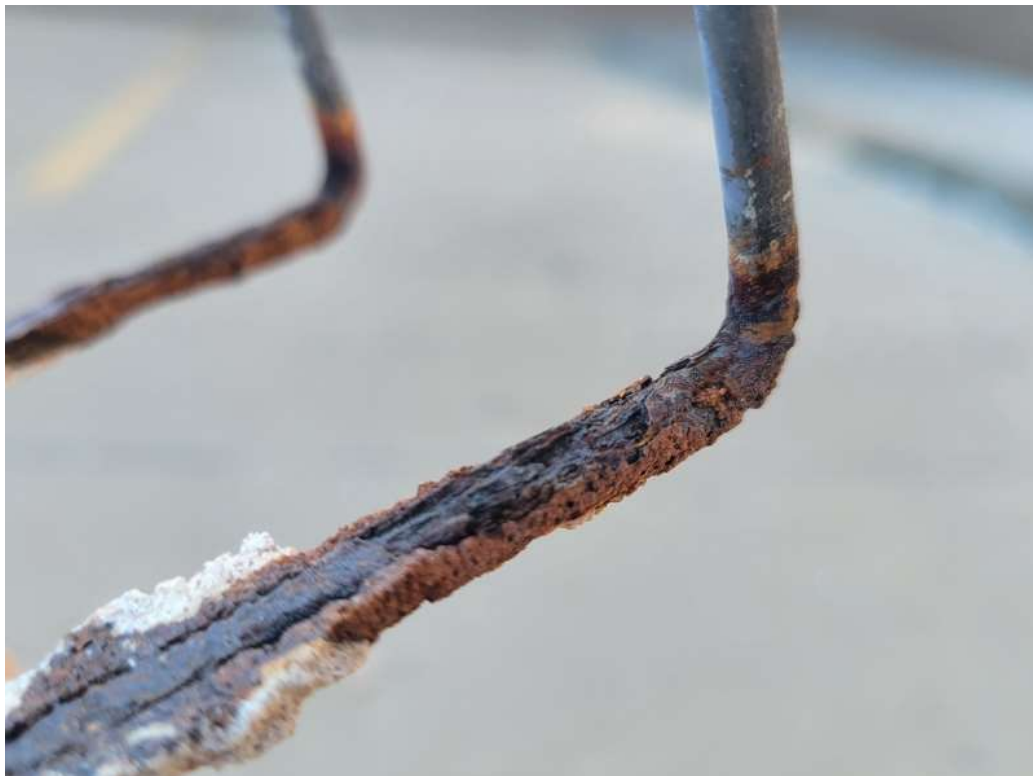


*Photo #119: Rust stains on the mortar along a wire (north elevation, fitness area, 6/26/23).*



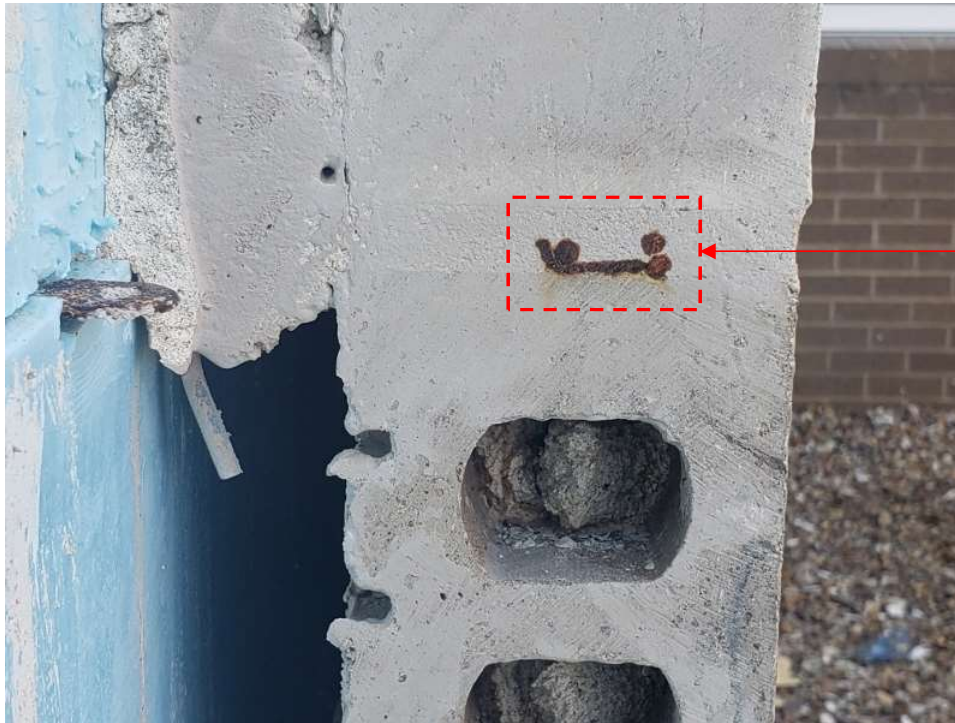


*Photo #120: View of rusted brick anchor ties after removal from the wall (north elevation, fitness area, 6/27/23).*



*Photo #121: Close-up view of a rusted brick anchor tie (north elevation, fitness area, 6/27/23).*





*Photo #122: View of a rusted brick anchor tie and wire, but no indication of staining on the brick surface (west elevation, hallway, 8/30/23).*



*Photo #123: Close-up view of a rusted brick anchor tie and wire (west elevation, hallway, 8/30/23).*

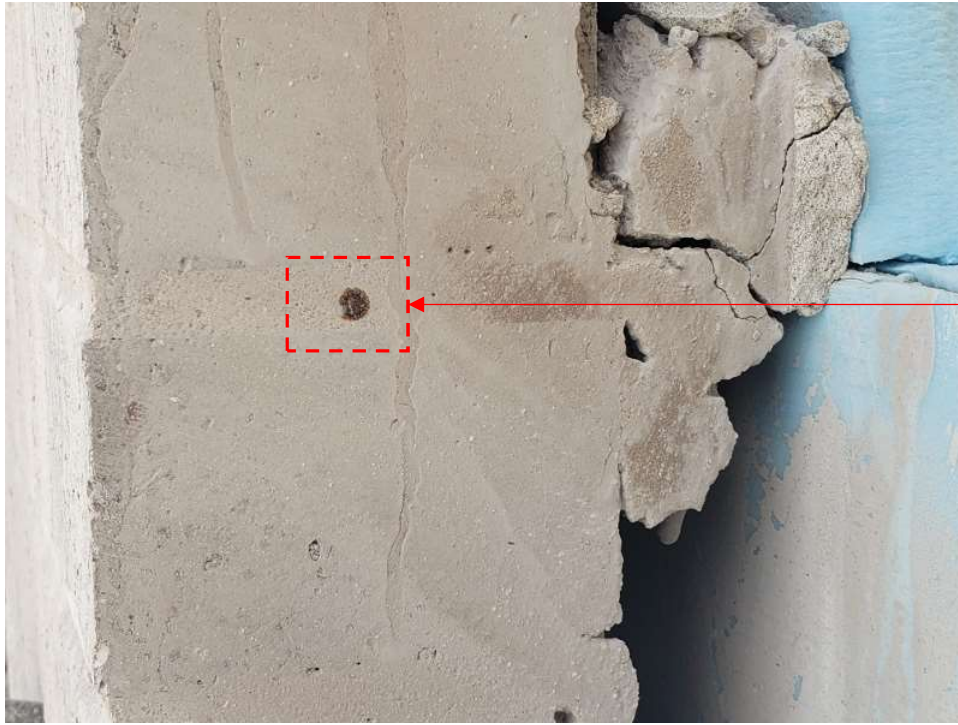


*Photo #124: View of a rusted brick anchor tie and wire, but no indication of staining on the brick surface (west elevation, hallway, 8/30/23).*



*Photo #125: View of a rusted brick anchor tie and wire, but no indication of staining on the brick surface (west elevation, hallway, 8/30/23).*





*Photo #126: View of a rusted brick wire, but no indication of staining on the brick surface (west elevation, stairwell, 8/30/23).*



*Photo #127: Close-up view of rusted brick wire (west elevation, stairwell, 8/30/23).*



*Photo #128: View of a rusted brick wire, but no indication of steel corrosion where not embedded in the mortar joint (west elevation, stairwell, 8/30/23).*



*Photo #129: Close-up view of rusted brick tie in direct contact with the mortar, but no indication of steel corrosion where not embedded in the mortar joint (west elevation, stairwell, 8/30/23).*