

2770 Aquitaine Ave.

Overview

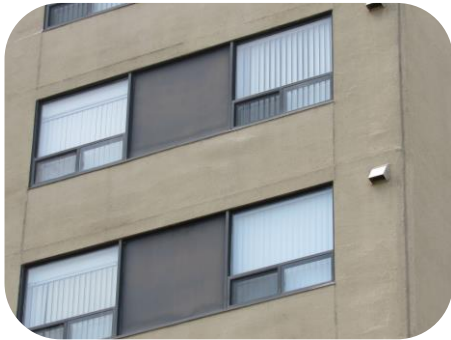
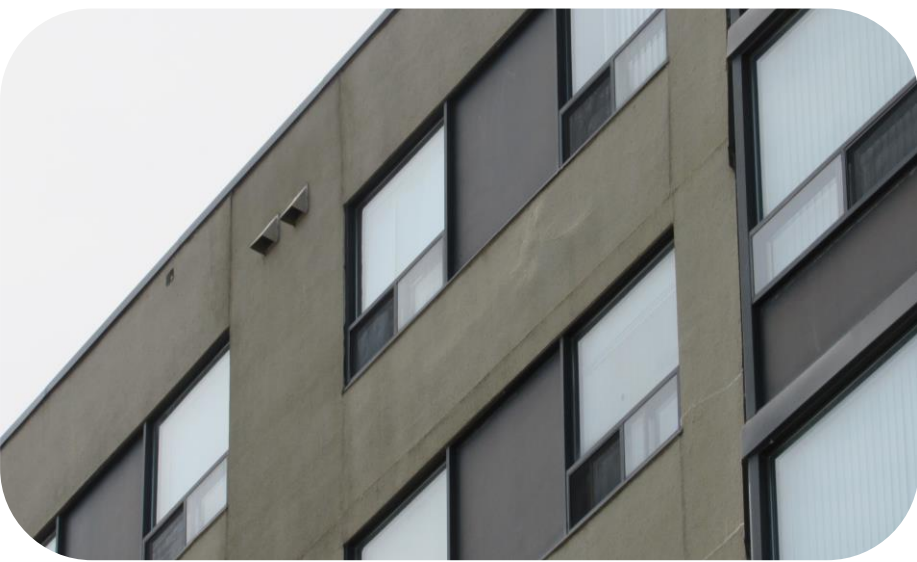
- A phased retrofit of the building including the building envelope (cladding and fenestration) and a feasibility study for a new high performing mechanical system.
- The project includes constructing new insulated knee walls to replace the spandrel panels and reduce the glazing area.
- Pretium successfully completed an application through SaveONEnergy for an energy incentive on behalf of the client.



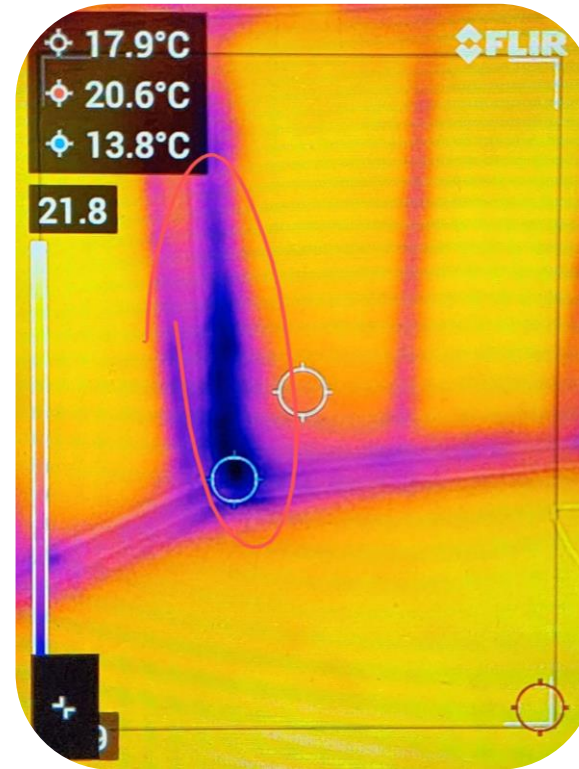
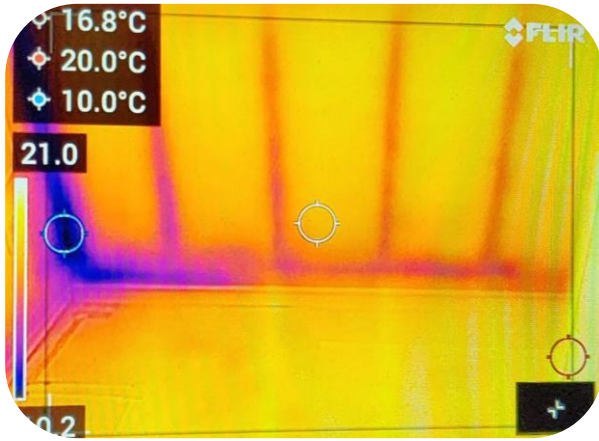
Energy consumption and GHG emissions at the building will decrease by 11.5% and the project has received an energy incentive of approximately \$42,000.



Original Building and Conditions



Destructive and Non-Destructive Testing



Destructive and Non-Destructive Testing



Construction Progress



1



3



2



4