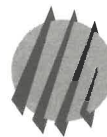


1



SK-11

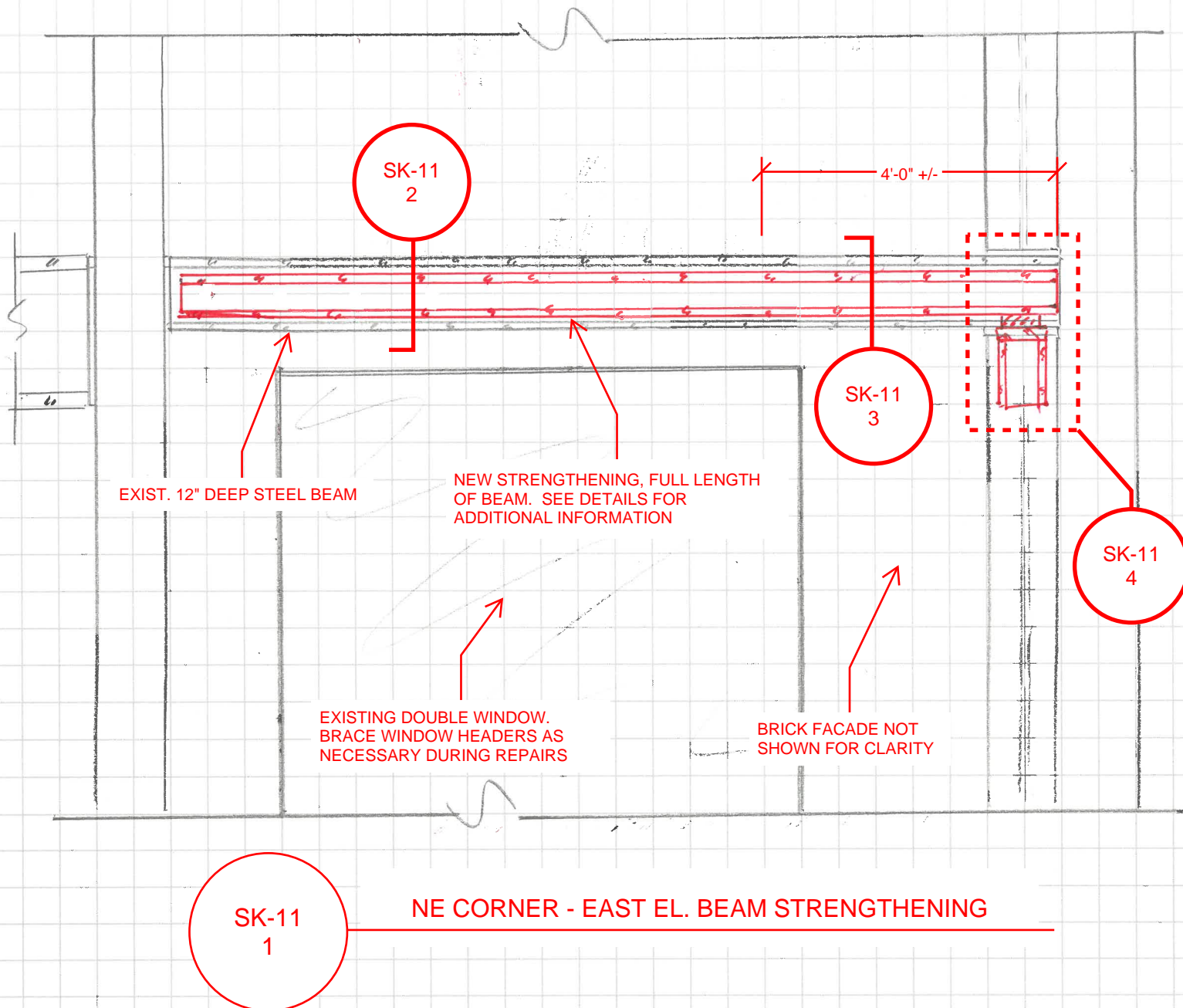
NE CORNER - EAST EL. BEAM STRENGTHENING

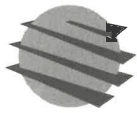


WALKER
CONSULTANTS

Job _____ No. _____
By _____ Date _____
Checked _____ Date _____

850 W. Jackson Blvd.,
Suite 310
Chicago, IL 60607

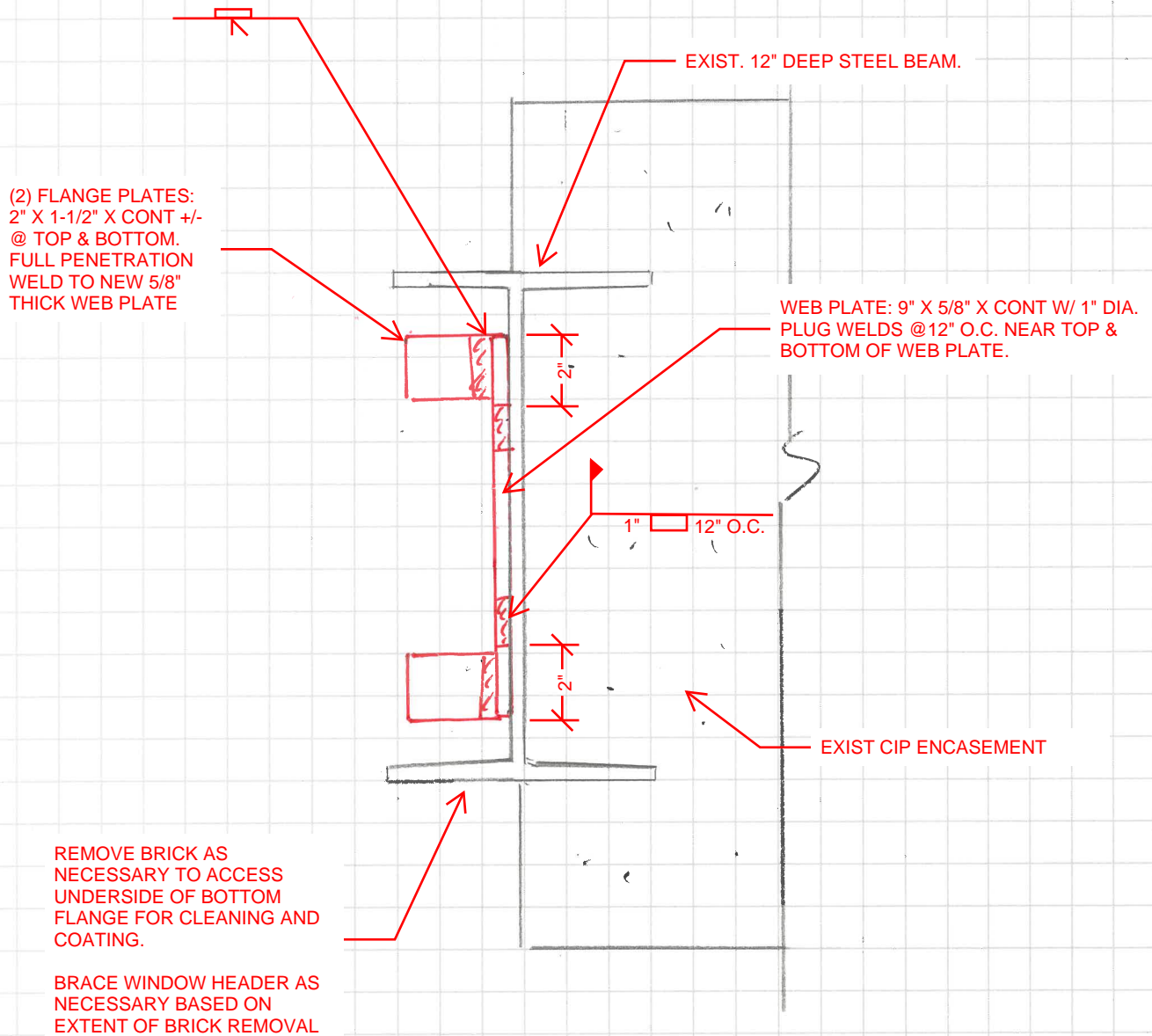




WALKER
CONSULTANTS

Job _____ No. _____
By _____ Date _____
Checked _____ Date _____

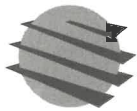
850 W. Jackson Blvd.,
Suite 310
Chicago, IL 60607



NOTE: CLEAN ALL EXPOSED EXISTING STEEL TO SSPC SP-3. COAT ALL EXPOSED STEEL (EXISTING AND NEW) WITH EPOXY PAINT.

SK-11
2

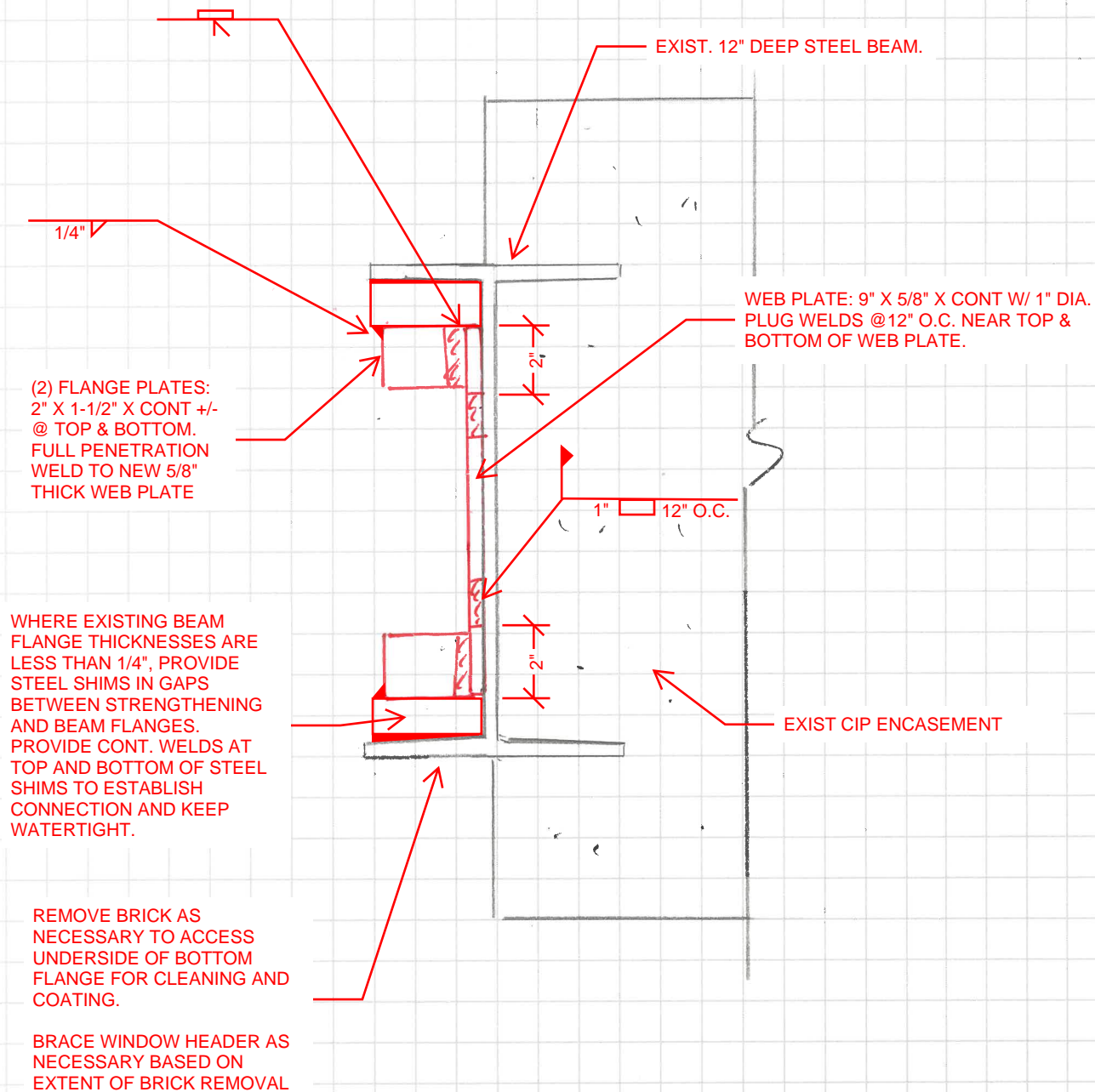
NE CORNER - EAST EL. BEAM STRENGTHENING



WALKER
CONSULTANTS

Job _____ No. _____
By _____ Date _____
Checked _____ Date _____

850 W. Jackson Blvd.,
Suite 310
Chicago, IL 60607



NOTE: CLEAN ALL EXPOSED EXISTING STEEL TO SSPC SP-3. COAT ALL EXPOSED STEEL (EXISTING AND NEW) WITH EPOXY PAINT.

SK-11
3

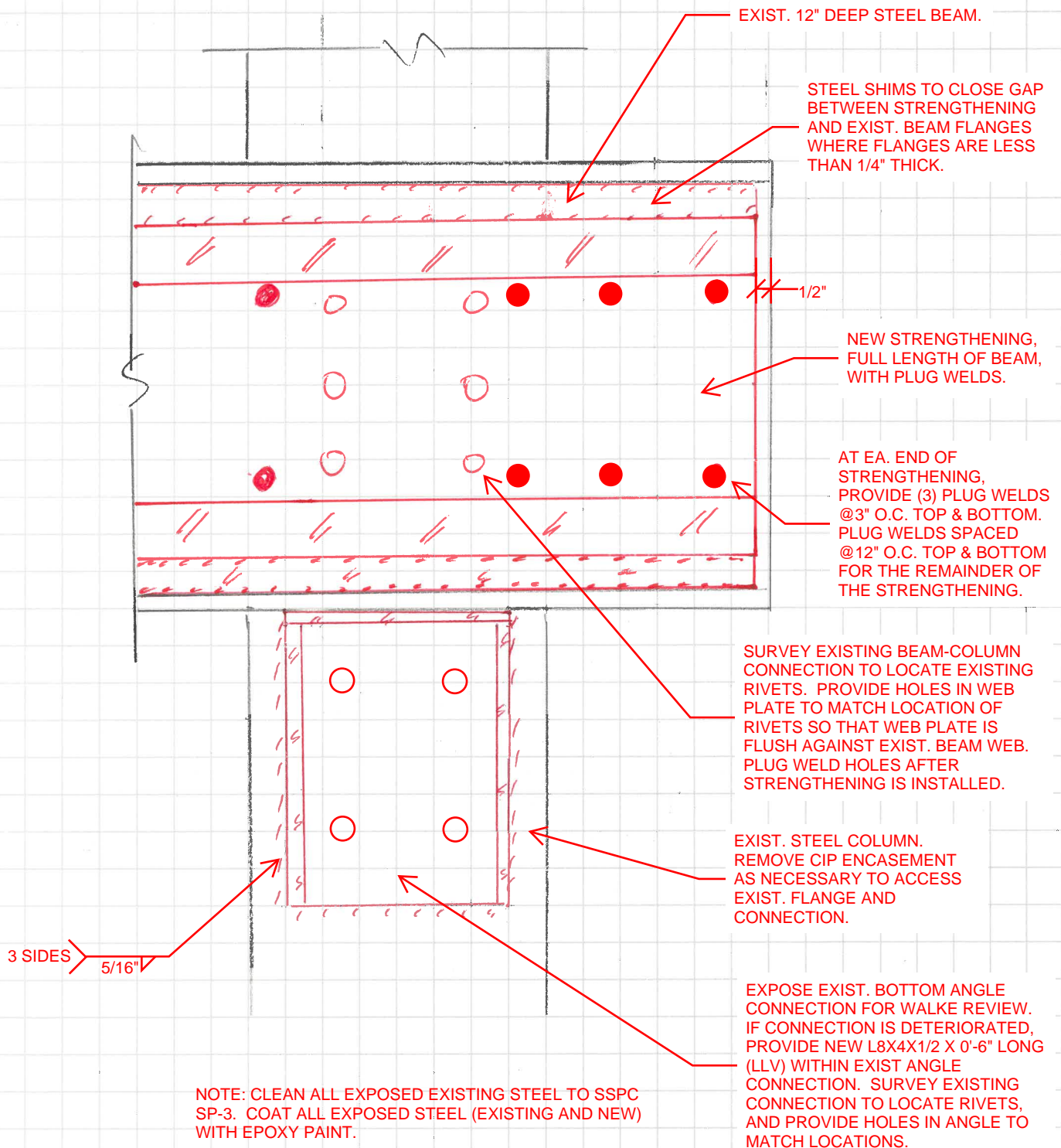
NE CORNER - EAST EL. BEAM STRENGTHENING



WALKER
CONSULTANTS

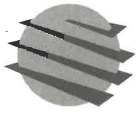
Job _____ No. _____
By _____ Date _____
Checked _____ Date _____

850 W. Jackson Blvd.,
Suite 310
Chicago, IL 60607



SK-11
4

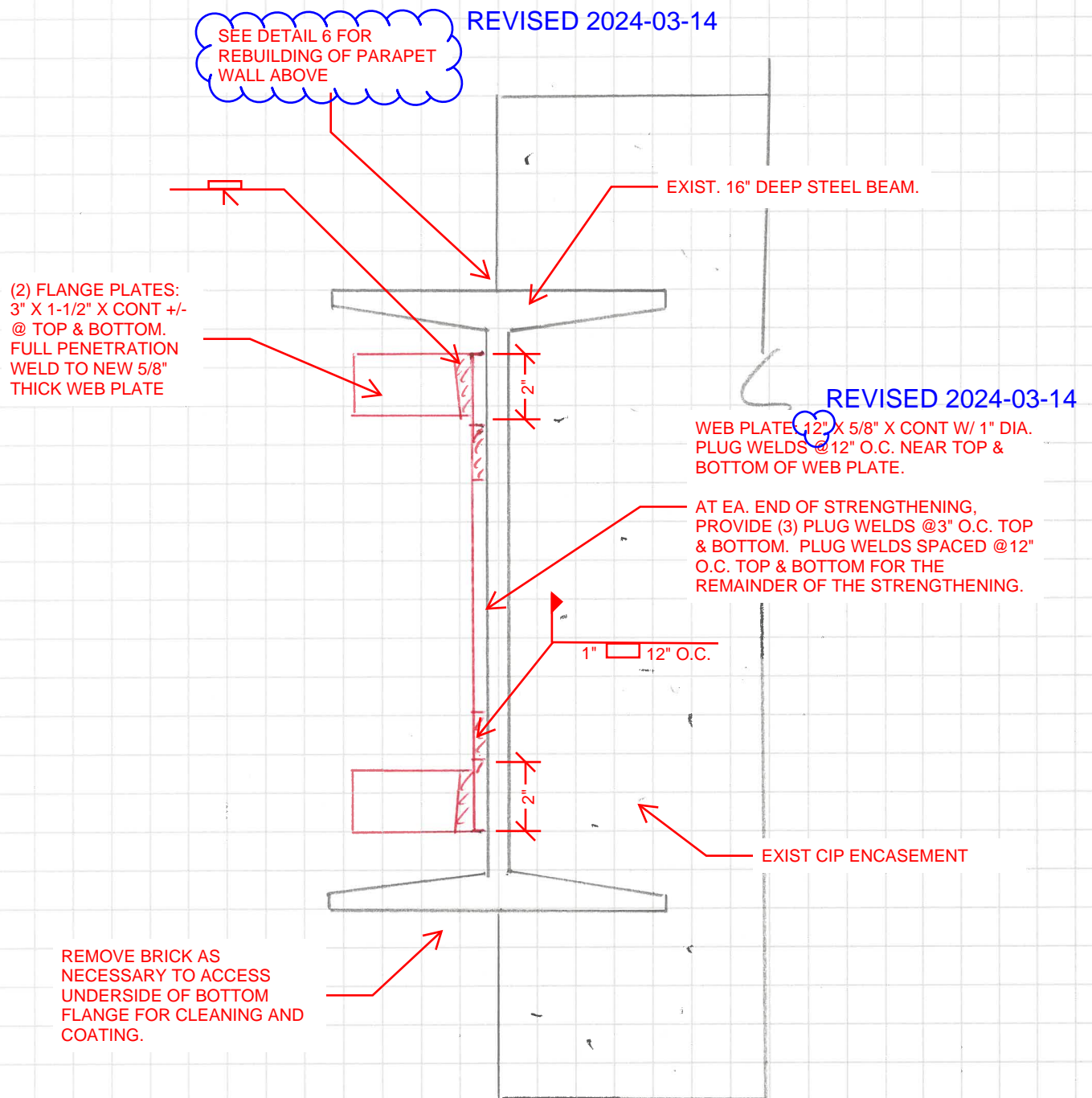
NE CORNER - EAST EL. BEAM STRENGTHENING



WALKER
CONSULTANTS

Job _____ No. _____
By _____ Date _____
Checked _____ Date _____

850 W. Jackson Blvd.,
Suite 310
Chicago, IL 60607



NOTES:

1. STRENGTHENING TO EXTEND FULL LENGTH OF BEAM, MINUS APPROX 1/2" EA. END.
2. SURVEY EXISTING BEAM-COLUMN CONNECTIONS TO LOCATE EXISTING RIVETS. PROVIDE HOLES IN WEB PLATE TO MATCH LOCATION OF RIVETS SO THAT WEB PLATE IS FLUSH AGAINST EXIST. BEAM WEB. PLUG WELD HOLES AFTER STRENGTHENING IS INSTALLED.
3. CLEAN ALL EXPOSED EXISTING STEEL TO SSPC SP-3. COAT ALL EXPOSED STEEL (EXISTING AND NEW) WITH EPOXY PAINT.

SK-11
5

NE CORNER - NORTH EL. BEAM STRENGTHENING



WALKER
CONSULTANTS

Job _____ No. _____

By _____ Date _____

Checked _____ Date _____

850 W. Jackson Blvd.,
Suite 310
Chicago, IL 60607

REVISED 2024-03-14

EXISTING COPING STONE.
REINSTALL WITH NEW
FLASHING AND ANCHORS
PER DETAIL 80.4

NEW BRICK . PROVIDE
BRICK TIES PER DETAIL 80.4

HEADER COURSE AT INNER
WYTHER. CUT/REMOVE BRICK AS
NECESSARY TO ACCOMMODATE
NEW PLATE WITH ROD.

3/8" DIA. WELDABLE
THREADED ROD OR #3
WELDABLE
REINFORCEMENT @12"
O.C. MAX. PLACE WITHIN
MORTAR JOINT BETWEEN
INNER WYTHER AND NEW
BRICK, MORTAR SOLID

INNER WYTHER OF BRICK TO
REMAIN IF STRUCTURALLY
STABLE. PROVIDE BRICK TIES TO
NEW BRICK PER DETAIL 80.4

3-1/2" X 3-1/2" X 3/8" PLATE WITH FULL PEN
WELD TO BEAM FLANGE @12" O.C. MAX.
WELD 3/8" DIA. WELDABLE THREADED ROD
(OR #3 WELDABLE REBAR) TO PLATE
(SHOP WELD). POSITION SO THAT ROD IS
PLACED WITHIN MORTAR JOINT BETWEEN
WYTHES OF BRICK

SK-11
7

EXIST. 16" DEEP STEEL BEAM.

EXIST CIP ENCASEMENT

SK-11
6

NE CORNER - NORTH EL. BEAM STRENGTHENING



WALKER
CONSULTANTS

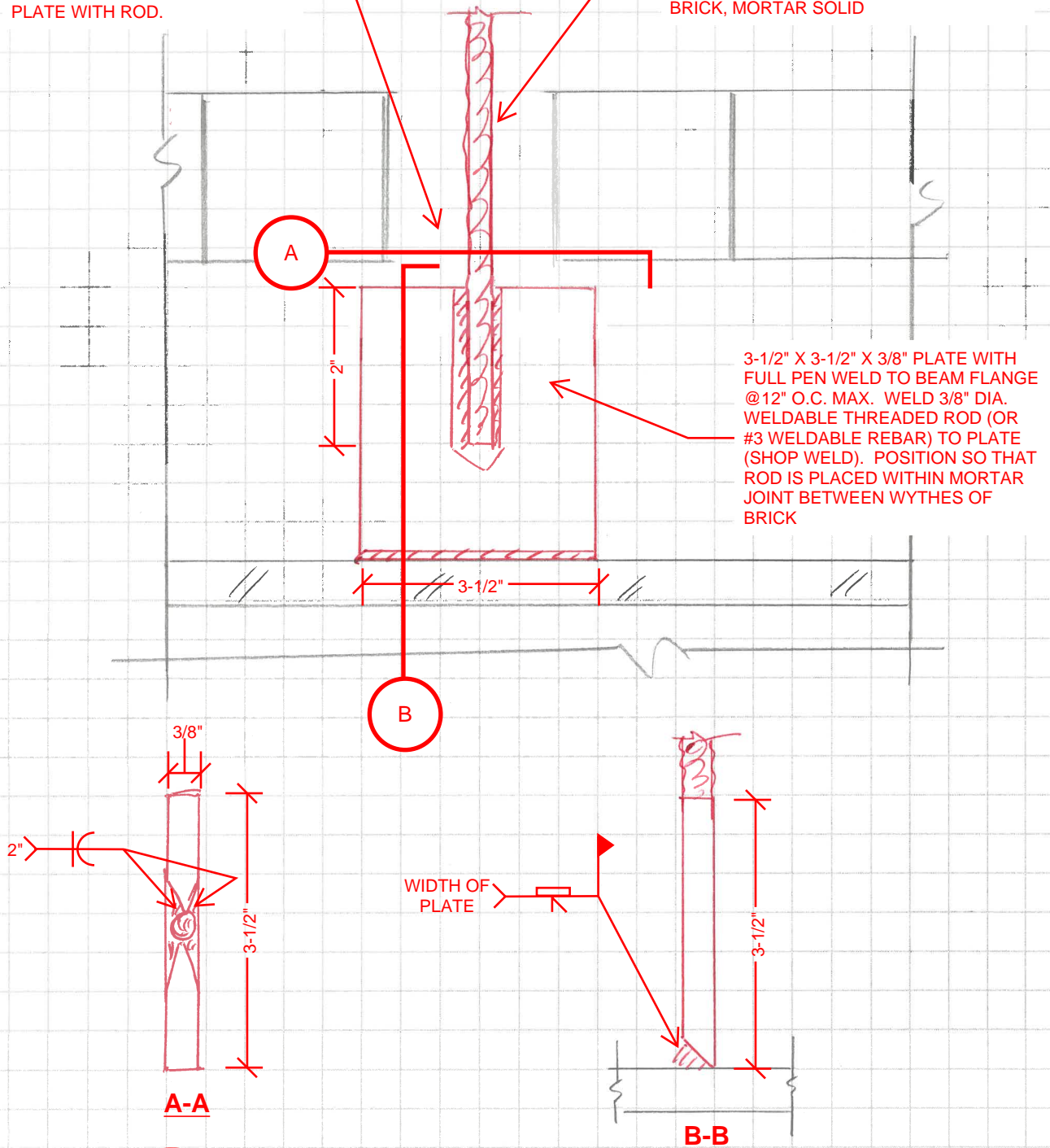
Job _____ No. _____
By _____ Date _____
Checked _____ Date _____

850 W. Jackson Blvd.,
Suite 310
Chicago, IL 60607

REVISED 2024-03-14

HEADER COURSE AT INNER
WYTHE. CUT/REMOVE BRICK AS
NECESSARY TO ACCOMMODATE
PLATE WITH ROD.

3/8" DIA. WELDABLE THREADED ROD OR
#3 WELDABLE REINFORCEMENT @12"
O.C. MAX. PLACE WITHIN MORTAR JOINT
BETWEEN INNER WYTHE AND NEW
BRICK, MORTAR SOLID



SK-11
7

NE CORNER - NORTH EL. BEAM STRENGTHENING