

Atrium on Commonwealth Phase 1 Facade Reclad



1079 COMMONWEALTH AVE
BOSTON, MA 02215

CONSTRUCTION DOCUMENTS

SUBMITTED ON: APRIL 16, 2021

ARCHITECT

marguliesperruzzi

308 Congress Street, 4th Floor
Boston, Massachusetts 02210
P: 617.482.3232
Web: www.mparchitectsboston.com

STRUCTURAL/ BUILDING ENVELOPE

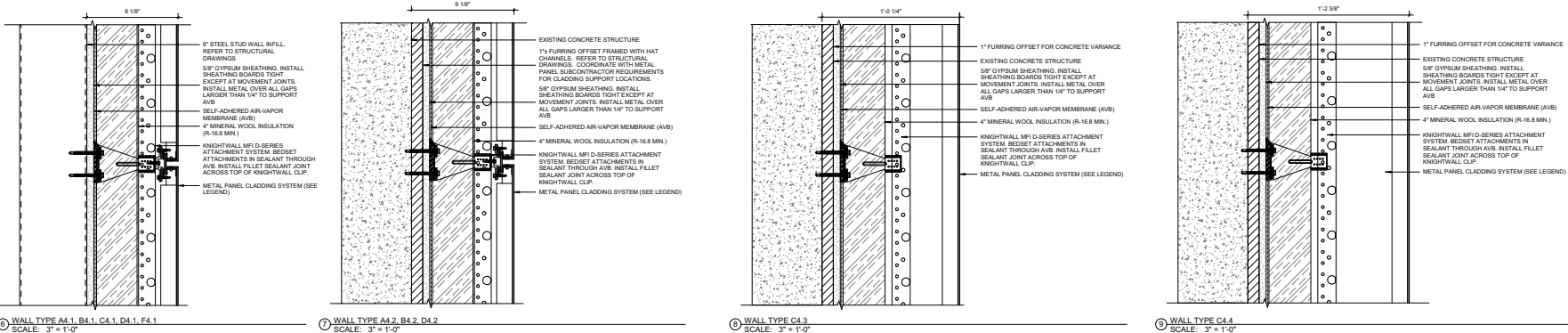
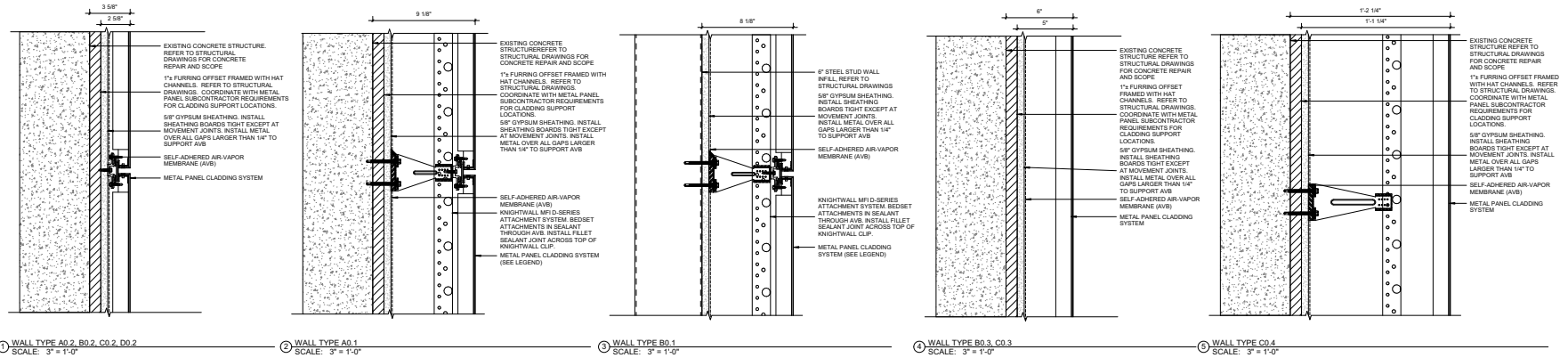
SIMPSON GUMPERT & HEGER
Engineering of Structures
and Building Enclosures

480 Totten Pond Road
Waltham, Massachusetts 02451
P: 781.907.9000
Web: www.sgh.com

PROVIDED AS SUPPORTING DOCUMENTATION TO
IIBEC FOR EVALUATION OF 2024 EXCELLENCE IN
BUILDING ENCLOSURE CONSULTING AWARD.

THIS WORK PRODUCT IS PROTECTED BY US AND
INTERNATIONAL COPYRIGHT LAWS.
REPRODUCTION, DISTRIBUTION, DISPLAY AND
USE OF THE WORK PRODUCT WITHOUT WRITTEN
PERMISSION OF THE SGH IS PROHIBITED.

PROJECT NUMBER: 190653



WALL TYPE INFORMATION & NOTES

WALL ASSEMBLY TAG LEGEND

- CLADDING FINISH
- INSULATION THICKNESS (IN.)
- DESIGNATION FOR OTHER VARIATIONS

CLADDING FINISH LEGEND

MATERIAL ID	MATERIAL DESCRIPTION	MANUFACTURER	MODEL # / SERIES	COLOR
A	METAL PANEL - COLOR #1	REYNOLBOND	SERIES ONE COLORWELD 500	"CADET GRAY"
B	METAL PANEL - COLOR #2	REYNOLBOND	SERIES TWO COLORWELD 500	"PEWTER"
C	METAL INSET PANEL - DECORATIVE PATTERN #1	REYNOLBOND	DESIGN LINE / WOOD FINISHES	"ITALIAN WALNUT"
D	SURROUNDS AT STREET FACING FACADES	REYNOLBOND	SERIES THREE COLORWELD 500XL	"COPPER PENNY"
E	METAL PANEL SURROUND AT COURTYARD	N/A		
F	ACCENT WALL INSET PANELS AT	REYNOLBOND	SERIES TWO COLORWELD 500	"PEWTER"
G	CEILING PANELS AT TOWNHOUSE LEVELS	THESPA	METEOR FACADES	"A21 7.0 STEEL GREY"
H	CORRUGATED METAL PANELING AT PENTHOUSES	MORIN	MX-100 / MATRIX SERIES	"CHROMIUM GRAY"
I	CAST STONE VENEER	TBD	TBD	TBD

* METAL TRIM TO MATCH KAWNEER PERMAFLUOR 3802TH "CHARCOAL"

10 TYPICAL SNOW BUTTAN AT METAL PANEL
SCALE: 12" = 1'-0"

11 WALL TYPE B6.1, D6.1
SCALE: 3" = 1'-0"

12 WALL TYPE B6.2, D6.2
SCALE: 3" = 1'-0"

CLIENT INFORMATION

THE
KAMELTON COMPANY
Atrium on Commonwealth
Phase 1 Facade Reclad
1070 COMMONWEALTH AVE
BOSTON, MA 02215

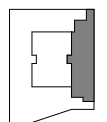
CONSULTANT INFORMATION

PROVIDED AS SUPPORTING
DOCUMENTATION TO BBG FOR
EVALUATION OF 2024 EXCELLENCE
IN BUILDING ENCLOSURE
CONSULTING AWARD.
THIS WORK PRODUCT IS
PROTECTED BY US AND
INTERNATIONAL COPYRIGHT LAWS.
REPRODUCTION, DISTRIBUTION,
DISPLAY AND USE OF THE WORK
PRODUCT WITHOUT WRITTEN
PERMISSION OF THE SGH IS
PROHIBITED.

REVISIONS

NO	DESCRIPTION	DATE

KEY PLAN



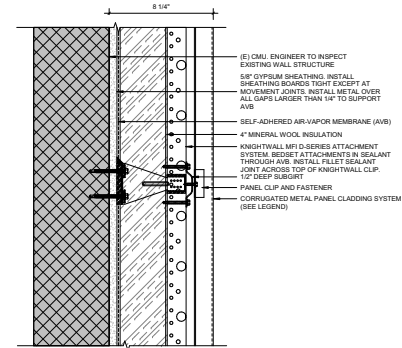
PROJECT NORTH



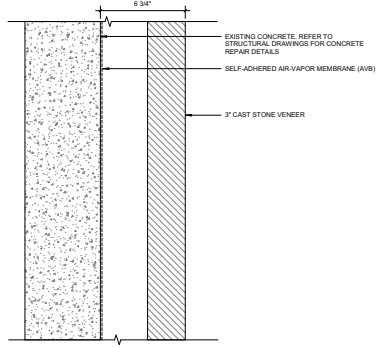
DATE: 04.16.2021
SCALE: As indicated
DRAWN BY: FB
PROJECT NUMBER: 190653
DRAWING TITLE
TYPICAL WALL
ASSEMBLIES

A1-701

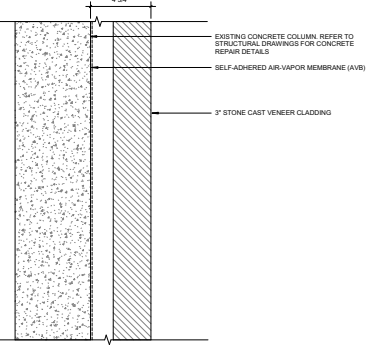
DRAWING NUMBER
CONSTRUCTION
DOCUMENTS



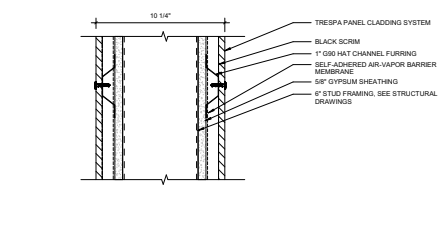
① WALL TYPE H4.1
SCALE: 3" = 1'-0"



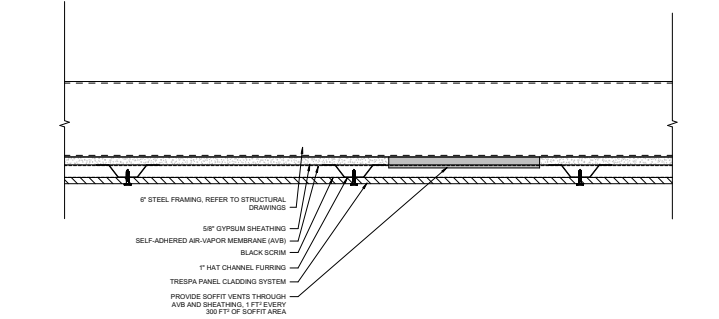
② WALL TYPE ID.1
SCALE: 3" = 1'-0"



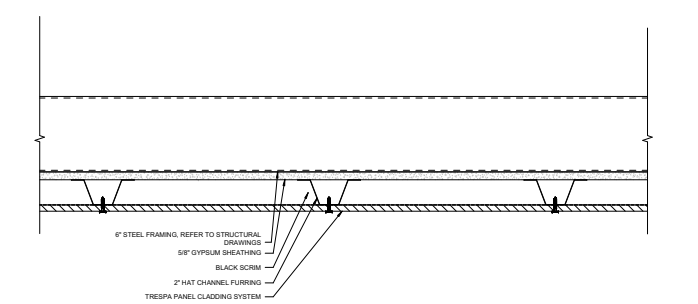
③ WALL TYPE ID.2
SCALE: 3" = 1'-0"



④ WALL TYPE J1.1
SCALE: 3" = 1'-0"



⑤ SOFFIT TYPE G0.1
SCALE: 3" = 1'-0"



⑥ SOFFIT TYPE G0.2
SCALE: 3" = 1'-0"

WALL TYPE INFORMATION & NOTES

WALL ASSEMBLY TAG LEGEND				
CLADDING FINISH LEGEND				
MATERIAL ID	MATERIAL DESCRIPTION	MANUFACTURER	MODEL # / SERIES	COLOR
A	METAL PANEL - COLOR #1	REYNOLBOND	SERIES ONE / COLORWELD 500	"CADET GRAY"
B	METAL PANEL - COLOR #2	REYNOLBOND	SERIES TWO / COLORWELD 500	"PEWTER"
C	METAL INSET PANEL DECORATIVE PATTERN #1	REYNOLBOND	DESIGN LINE / WOOD FINISHES	"ITALIAN WALNUT"
D	SURROUNDS AT STREET FACING FACADES DECORATIVE FINISH AT COURTYARD TOWERS	REYNOLBOND	SERIES THREE / COLORWELD 500XL	"COPPER PENNY"
E	METAL PANEL SURROUND AT COURTYARD	N/A		
F	ACCENT WALL INSET PANELS AT	REYNOLBOND	SERIES TWO / COLORWELD 500	"PEWTER"
G	CEILING PANELS AT TOWNHOUSE LEVELS	TRESPA	METEON FACADES	"A21.7.0 'STEEL GREY'"
H	CORRUGATED METAL PANELING AT PENTHOUSES	MORN		
I	CAST STONE VENEER			

* METAL TRIM TO MATCH KAWNEER PERMAFLUOR 382016 "CHARCOAL"

CLIENT INFORMATION



Atrium on Commonwealth
Phase 1 Facade Reclad
1079 COMMONWEALTH AVE
BOSTON, MA 02215

CONSULTANT INFORMATION

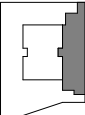
PROVIDED AS SUPPORTING
DOCUMENTATION TO BBFC FOR
EVALUATION OF 2024 EXCELLENCE
IN BUILDING ENCLOSURE
CONSULTING AWARD.

THIS WORK PRODUCT IS
PROTECTED BY US AND
INTERNATIONAL COPYRIGHT LAWS.
REPRODUCTION, DISTRIBUTION,
DISPLAY AND USE OF THE WORK
PRODUCT WITHOUT WRITTEN
PERMISSION OF THE SGH IS
PROHIBITED.

REVISIONS

NO	DESCRIPTION	DATE
----	-------------	------

KEY PLAN



PROJECT NORTH

STAMP



DATE: 04.16.2021

SCALE: 3" = 1'-0"

DRAWN BY: FB

PROJECT NUMBER: 190653

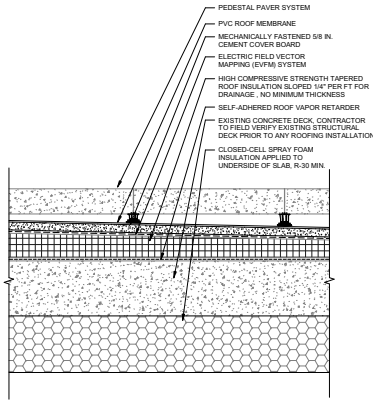
DRAWING TITLE

**TYPICAL ROOFING AND
WATERPROOFING
ASSEMBLIES**

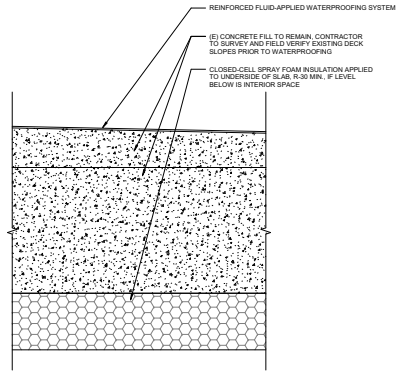
A1-710

DRAWING NUMBER

**CONSTRUCTION
DOCUMENTS**



② R-1 - ROOF AT COURTYARD TOWER
SCALE: 3" = 1'-0"



① WP-1 - BALCONY WATERPROOFING
SCALE: 3" = 1'-0"

WINDOW SCHEDULE - PHASE 1																			
WINDOW UNIT		DESCRIPTION		DIMENSIONS		GLAZING TYPE						TYPE - BY UNIT		HARDWARE		TRIM FINISH		COMMENTS	
						WINDOW UNIT			ROUGH OPENING										
						HEIGHT	WIDTH	R.O. HEIGHT	R.O. WIDTH	TYPE	BY UNIT								
WINDOW UNIT	TYPE	DESCRIPTION	HEIGHT	WIDTH	R.O. HEIGHT	R.O. WIDTH	TYPE	BY UNIT	TOP LEFT	TOP RIGHT	BOT LEFT	BOT RIGHT							
W196	W191	TWO BAY W/ LOUVER	10'-0"	7'-0"	0'-0"	1'-10 1/2"	7'-1 1/2"	GL-2	GL-2	GL-1	GL-2								
W197	W191	TWO BAY W/ LOUVER	10'-0"	7'-0"	0'-0"	1'-10 1/2"	7'-1 1/2"	GL-2	GL-1	GL-1	GL-1								
W198	W191	OPERABLE TWO BAY W/ LOUVER	10'-0"	7'-0"	0'-0"	1'-10 1/2"	7'-1 1/2"	GL-1	GL-1	GL-1	GL-1								
W199	W191	OPERABLE TWO BAY W/ LOUVER	10'-0"	7'-0"	0'-0"	1'-10 1/2"	7'-1 1/2"	GL-1	GL-1	GL-1	GL-1								
W200	W191	TWO BAY W/ LOUVER	10'-0"	7'-0"	0'-0"	1'-10 1/2"	7'-1 1/2"	GL-2	GL-2	GL-1	GL-1								
W201	W191	TWO BAY W/ LOUVER	10'-0"	7'-0"	0'-0"	1'-10 1/2"	7'-1 1/2"	GL-2	GL-2	GL-1	GL-1								
W202	W191	OPERABLE TWO BAY W/ LOUVER	10'-0"	7'-0"	0'-0"	1'-10 1/2"	7'-1 1/2"	GL-2	GL-2	GL-1	GL-1								
W203	W191	OPERABLE TWO BAY W/ LOUVER	10'-0"	7'-0"	0'-0"	1'-10 1/2"	7'-1 1/2"	GL-2	GL-2	GL-1	GL-1								
W204	W191	OPERABLE TWO BAY W/ LOUVER	10'-0"	7'-0"	0'-0"	1'-10 1/2"	7'-1 1/2"	GL-2	GL-2	GL-1	GL-1								
W205	W191	OPERABLE TWO BAY W/ LOUVER	10'-0"	7'-0"	0'-0"	1'-10 1/2"	7'-1 1/2"	GL-2	GL-2	GL-1	GL-1								
W206	W191	OPERABLE TWO BAY W/ LOUVER	10'-0"	7'-0"	0'-0"	1'-10 1/2"	7'-1 1/2"	GL-2	GL-2	GL-1	GL-1								
W207	W191	OPERABLE TWO BAY W/ LOUVER	10'-0"	7'-0"	0'-0"	1'-10 1/2"	7'-1 1/2"	GL-2	GL-2	GL-1	GL-1								
W208	W191	OPERABLE TWO BAY W/ LOUVER	10'-0"	7'-0"	0'-0"	1'-10 1/2"	7'-1 1/2"	GL-2	GL-2	GL-1	GL-1								
W209	W191	OPERABLE TWO BAY W/ LOUVER	10'-0"	7'-0"	0'-0"	1'-10 1/2"	7'-1 1/2"	GL-2	GL-2	GL-1	GL-1								
W210	W191	OPERABLE TWO BAY W/ LOUVER	10'-0"	7'-0"	0'-0"	1'-10 1/2"	7'-1 1/2"	GL-2	GL-2	GL-1	GL-1								
W211	W191	OPERABLE TWO BAY W/ LOUVER	10'-0"	7'-0"	0'-0"	1'-10 1/2"	7'-1 1/2"	GL-2	GL-2	GL-1	GL-1								
W212	W191	OPERABLE TWO BAY W/ LOUVER	10'-0"	7'-0"	0'-0"	1'-10 1/2"	7'-1 1/2"	GL-2	GL-2	GL-1	GL-1								
W213	W191	OPERABLE TWO BAY W/ LOUVER	10'-0"	7'-0"	0'-0"	1'-10 1/2"	7'-1 1/2"	GL-2	GL-2	GL-1	GL-1								
W214	W191	OPERABLE TWO BAY W/ LOUVER	10'-0"	7'-0"	0'-0"	1'-10 1/2"	7'-1 1/2"	GL-2	GL-2	GL-1	GL-1								
W215	W191	OPERABLE TWO BAY W/ LOUVER	10'-0"	7'-0"	0'-0"	1'-10 1/2"	7'-1 1/2"	GL-2	GL-2	GL-1	GL-1								
W216	W191	OPERABLE TWO BAY W/ LOUVER	10'-0"	7'-0"	0'-0"	1'-10 1/2"	7'-1 1/2"	GL-2	GL-2	GL-1	GL-1								
W217	W191	OPERABLE TWO BAY W/ LOUVER	10'-0"	7'-0"	0'-0"	1'-10 1/2"	7'-1 1/2"	GL-2	GL-2	GL-1	GL-1								
W218	W191	OPERABLE TWO BAY W/ LOUVER	10'-0"	7'-0"	0'-0"	1'-10 1/2"	7'-1 1/2"	GL-2	GL-2	GL-1	GL-1								
W219	W191	OPERABLE TWO BAY W/ LOUVER	10'-0"	7'-0"	0'-0"	1'-10 1/2"	7'-1 1/2"	GL-2	GL-2	GL-1	GL-1								
W220	W191	OPERABLE TWO BAY W/ LOUVER	10'-0"	7'-0"	0'-0"	1'-10 1/2"	7'-1 1/2"	GL-2	GL-2	GL-1	GL-1								
W221	W191	OPERABLE TWO BAY W/ LOUVER	10'-0"	7'-0"	0'-0"	1'-10 1/2"	7'-1 1/2"	GL-2	GL-2	GL-1	GL-1								
W222	W191	OPERABLE TWO BAY W/ LOUVER	10'-0"	7'-0"	0'-0"	1'-10 1/2"	7'-1 1/2"	GL-2	GL-2	GL-1	GL-1								
W223	W191	OPERABLE TWO BAY W/ LOUVER	10'-0"	7'-0"	0'-0"	1'-10 1/2"	7'-1 1/2"	GL-2	GL-2	GL-1	GL-1								
W224	W191	OPERABLE TWO BAY W/ LOUVER	10'-0"	7'-0"	0'-0"	1'-10 1/2"	7'-1 1/2"	GL-2	GL-2	GL-1	GL-1								
W225	W191	OPERABLE TWO BAY W/ LOUVER	10'-0"	7'-0"	0'-0"	1'-10 1/2"	7'-1 1/2"	GL-2	GL-2	GL-1	GL-1								
W226	W191	OPERABLE TWO BAY W/ LOUVER	10'-0"	7'-0"	0'-0"	1'-10 1/2"	7'-1 1/2"	GL-2	GL-2	GL-1	GL-1								
W227	W191	OPERABLE TWO BAY W/ LOUVER	10'-0"	7'-0"	0'-0"	1'-10 1/2"	7'-1 1/2"	GL-2	GL-2	GL-1	GL-1								
W228	W191	OPERABLE TWO BAY W/ LOUVER	10'-0"	7'-0"	0'-0"	1'-10 1/2"	7'-1 1/2"	GL-2	GL-2	GL-1	GL-1								
W229	W191	OPERABLE TWO BAY W/ LOUVER	10'-0"	7'-0"	0'-0"	1'-10 1/2"	7'-1 1/2"	GL-2	GL-2	GL-1	GL-1								
W230	W191	OPERABLE TWO BAY W/ LOUVER	10'-0"	7'-0"	0'-0"	1'-10 1/2"	7'-1 1/2"	GL-2	GL-2	GL-1	GL-1								
W231	W191	OPERABLE TWO BAY W/ LOUVER	10'-0"	7'-0"	0'-0"	1'-10 1/2"	7'-1 1/2"	GL-2	GL-2	GL-1	GL-1								
W232	W191	OPERABLE TWO BAY W/ LOUVER	10'-0"	7'-0"	0'-0"	1'-10 1/2"	7'-1 1/2"	GL-2	GL-2	GL-1	GL-1								
W233	W191	OPERABLE TWO BAY W/ LOUVER	10'-0"	7'-0"	0'-0"	1'-10 1/2"	7'-1 1/2"	GL-2	GL-2	GL-1	GL-1								
W234	W191	OPERABLE TWO BAY W/ LOUVER	10'-0"	7'-0"	0'-0"	1'-10 1/2"	7'-1 1/2"	GL-2	GL-2	GL-1	GL-1								
W235	W191	OPERABLE TWO BAY W/ LOUVER	10'-0"	7'-0"	0'-0"	1'-10 1/2"	7'-1 1/2"	GL-2	GL-2	GL-1	GL-1								
W236	W191	OPERABLE TWO BAY W/ LOUVER	10'-0"	7'-0"	0'-0"	1'-10 1/2"	7'-1 1/2"	GL-2	GL-2	GL-1	GL-1								
W237	W191	OPERABLE TWO BAY W/ LOUVER	10'-0"	7'-0"	0'-0"	1'-10 1/2"	7'-1 1/2"	GL-2	GL-2	GL-1	GL-1								
W238	W191	OPERABLE TWO BAY W/ LOUVER	10'-0"	7'-0"	0'-0"	1'-10 1/2"	7'-1 1/2"	GL-2	GL-2	GL-1	GL-1								
W239	W191	OPERABLE TWO BAY W/ LOUVER	10'-0"	7'-0"	0'-0"	1'-10 1/2"	7'-1 1/2"	GL-2	GL-2	GL-1	GL-1								
W240	W191	OPERABLE TWO BAY W/ LOUVER	10'-0"	7'-0"	0'-0"	1'-10 1/2"	7'-1 1/2"	GL-2	GL-2	GL-1	GL-1								
W241	W191	OPERABLE TWO BAY W/ LOUVER	10'-0"	7'-0"	0'-0"	1'-10 1/2"	7'-1 1/2"	GL-2	GL-2	GL-1	GL-1								
W242	W191	OPERABLE TWO BAY W/ LOUVER	10'-0"	7'-0"	0'-0"	1'-10 1/2"	7'-1 1/2"	GL-2	GL-2	GL-1	GL-1								
W243	W191	OPERABLE TWO BAY W/ LOUVER	10'-0"	7'-0"	0'-0"	1'-10 1/2"	7'-1 1/2"	GL-2	GL-2	GL-1	GL-1								
W244	W191	TWO BAY W/ LOUVER	10'-0"	7'-0"	0'-0"	1'-10 1/2"	7'-1 1/2"	GL-2	GL-2	GL-1	GL-1								
W245	W191	OPERABLE TWO BAY W/ LOUVER	10'-0"	7'-0"	0'-0"	1'-10 1/2"	7'-1 1/2"	GL-2	GL-2	GL-1	GL-1								
W246	W191	OPERABLE TWO BAY W/ LOUVER	10'-0"	7'-0"	0'-0"	1'-10 1/2"	7'-1 1/2"	GL-2	GL-2	GL-1	GL-1								
W247	W191	OPERABLE TWO BAY W/ LOUVER	10'-0"	7'-0"	0'-0"	1'-10 1/2"	7'-1 1/2"	GL-2	GL-2	GL-1	GL-1								
W248	W191	OPERABLE TWO BAY W/ LOUVER	10'-0"	7'-0"	0'-0"	1'-10 1/2"	7'-1 1/2"	GL-2	GL-2	GL-1	GL-1								
W249	W191	OPERABLE TWO BAY W/ LOUVER	10'-0"	7'-0"	0'-0"	1'-10 1/2"	7'-1 1/2"	GL-2	GL-2	GL-1	GL-1								
W250	W191	OPERABLE TWO BAY W/ LOUVER	10'-0"	7'-0"	0'-0"	1'-10 1/2"	7'-1 1/2"	GL-2	GL-2	GL-1	GL-1								
W251	W191	OPERABLE TWO BAY W/ LOUVER	10'-0"	7'-0"	0'-0"	1'-10 1/2"	7'-1 1/2"	GL-2	GL-2	GL-1	GL-1								
W252	W191	OPERABLE TWO BAY W/ LOUVER	10'-0"	7'-0"	0'-0"	1'-10 1/2"	7'-1 1/2"	GL-2	GL-2	GL-1	GL-1								
W253	W191	OPERABLE TWO BAY W/ LOUVER	10'-0"	7'-0"	0'-0"	1'-10 1/2"	7'-1 1/2"	GL-2	GL-2	GL-1	GL-1								
W254	W191	OPERABLE TWO BAY W/ LOUVER	10'-0"	7'-0"	0'-0"	1'-10 1/2"	7'-1 1/2"	GL-2	GL-2	GL-1	GL-1								
W255	W191	OPERABLE TWO BAY W/ LOUVER	10'-0"	7'-0"	0'-0"	1'-10 1/2"	7'-1 1/2"	GL-2	GL-2	GL-1	GL-1								
W256	W191	OPERABLE TWO BAY W/ LOUVER	10'-0"	7'-0"	0'-0"	1'-10 1/2"	7'-1 1/2"	GL-2	GL-2	GL-1	GL-1								
W257	W191	OPERABLE TWO BAY W/ LOUVER	10'-0"	7'-0"	0'-0"	1'-10 1/2"	7'-1 1/2"	GL-2	GL-2	GL-1	GL-1								
W258	W191	OPERABLE TWO BAY W/ LOUVER	10'-0"	7'-0"	0'-0"	1'-10 1/2"	7'-1 1/2"	GL-2	GL-2	GL-1	GL-1								
W259	W191	OPERABLE TWO BAY W/ LOUVER	10'-0"	7'-0"	0'-0"	1'-10 1/2"	7'-1 1/2"	GL-2	GL-2	GL-1	GL-1								
W260	W191	OPERABLE TWO BAY W/ LOUVER	10'-0"	7'-0"	0'-0"	1'-10 1/2"	7'-1 1/2"	GL-2	GL-2	GL-1	GL-1								
W261	W191	OPERABLE TWO BAY W/ LOUVER	10'-0"	7'-0"	0'-0"	1'-10 1/2"	7'-1 1/2"	GL-2	GL-2	GL-1	GL-1								
W262	W191	OPERABLE TWO BAY W/ LOUVER	10'-0"	7'-0"	0'-0"	1'-10 1/2"	7'-1 1/2"	GL-2	GL-2	GL-1	GL-1								
W263	W191	OPERABLE TWO BAY W/ LOUVER	10'-0"	7'-0"	0'-0"	1'-10 1/2"	7'-1 1/2"	GL-2	GL-2	GL-1	GL-1								
W264	W191	OPERABLE TWO BAY W/ LOUVER	10'-0"	7'-0"	0'-0"	1'-10 1/2"	7'-1 1/2"	GL-2	GL-2	GL-1	GL-1								
W265	W191	OPERABLE TWO BAY W/ LOUVER	10'-0"	7'-0"	0'-0"	1'-10 1/2"	7'-1 1/2"	GL-2	GL-2	GL-1	GL-1								
W266	W191	OPERABLE TWO BAY W/ LOUVER	10'-0"	7'-0"	0'-0"	1'-10 1/2"	7'-1 1/2"	GL-2	GL-2	GL-1	GL-1								
W267	W191	OPERABLE TWO BAY W/ LOUVER	10'-0"	7'-0"	0'-0"	1'-10 1/2"	7'-1 1/2"	GL-2	GL-2	GL-1	GL-1								
W268	W191	OPERABLE TWO BAY W/ LOUVER	10'-0"	7'-0"	0'-0"	1'-10 1/2"	7'-1 1/2"	GL-2	GL-2	GL-1	GL-1								
W269	W191	OPERABLE TWO BAY W/ LOUVER	10'-0"	7'-0"	0'-0"	1'-10 1/2"	7'-1 1/2"	GL-2	GL-2	GL-1	GL-1								
W270	W191	OPERABLE TWO BAY W/ LOUVER	10'-0"	7'-0"	0'-0"	1'-10 1/2"	7'-1 1/2"	GL-2	GL-2	GL-1	GL-1								
W271	W191	OPERABLE TWO BAY W/ LOUVER	10'-0"	7'-0"	0'-0"	1'-10 1/2"	7'-1 1/2"	GL-2	GL-2	GL-1	GL-1								
W272	W191	OPERABLE TWO BAY W/ LOUVER	10'-0"	7'-0"	0'-0"	1'-10 1/2"	7'-1 1/2"	GL-2	GL-2	GL-1	GL-1								
W273	W191	OPERABLE TWO BAY W/ LOUVER	10'-0"	7'-0"	0'-0"	1'-10 1/2"	7'-1 1/2"	GL-2	GL-2	GL-1	GL-1								
W274	W191	OPERABLE TWO BAY W/ LOUVER	10'-0"	7'-0"	0'-0"	1'-10 1/2"	7'-1 1/2"	GL-2	GL-2	GL-1	GL-1								
W275	W191	OPERABLE TWO BAY W/ LOUVER	10'-0"	7'-0"	0'-0"	1'-10 1/2"	7'-1 1/2"	GL-2	GL-2	GL-1	GL-1								
W276	W191	OPERABLE TWO BAY W/ LOUVER	10'-0"	7'-0"	0'-0"	1'-10 1/2"	7'-1 1/2"	GL-2	GL-2	GL-1	GL-1								
W277	W191	OPERABLE TWO BAY W/ LOUVER	10'-0"	7'-0"	0'-0"	1'-10 1/2"	7'-1 1/2"	GL-2	GL-2	GL-1	GL-1								
W278	W191	OPERABLE TWO BAY W/ LOUVER	10'-0"	7'-0"	0'-0"	1'-10 1/2"	7'-1 1/2"	GL-2	GL-2	GL-1	GL-1								
W279	W191	OPERABLE TWO BAY W/ LOUVER	10'-0"	7'-0"	0'-0"	1'-10 1/2"	7'-1 1/2"	GL-2	GL-2	GL-1	GL-1								
W280	W191	OPERABLE TWO BAY W/ LOUVER	10'-																


CONSULTANT INFORMATION

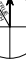
PROVIDED AS SUPPORTING DOCUMENTATION TO IBEC FOR EVALUATION OF 2024 EXCELLENCE IN BUILDING ENCLOSURE CONSULTING AWARD.

THIS WORK PRODUCT IS PROTECTED BY US AND INTERNATIONAL COPYRIGHT LAWS. REPRODUCTION, DISTRIBUTION, DISPLAY AND USE OF THIS WORK PRODUCT WITHOUT WRITTEN PERMISSION OF THE SIGNATORY IS PROHIBITED.

SCHEDULE PROVIDED FOR REFERENCE. DESIGN IN PROGRESS. SHEET FOR ROUGH OPENING CONSTRUCTION ONLY

REVISIONS		
NO	DESCRIPTION	DATE

KEY PLAN	
	

PROJECT NORTH	STAMP
	
DATE: 04.16.2021 SCALE: As Indicated DRAWN BY: MS PROJECT NUMBER: 190603 DRAWING TITLE WINDOW SCHEDULE & TYPES	
<h1 style="margin: 0;">A1-820</h1>	
DRAWING NUMBER	
CONSTRUCTION DOCUMENTS	

WINDOW TYPES - PHASE 1



SIMPSON SUPPORT & DESIGN
Engineering of Structures
and Building Products
480 Totten Pond Road, Waltham MA 02451
781.907.8000
sgh.com

**margulies
perruzzi**
308 Congress Street, Boston MA 02210
617.482.3332
mp@architects.com

CLIENT INFORMATION

**THE
KAMETON COMPANY**

Atrium on Commonwealth
Phase 1 Facade Reclad
1075 COMMONWEALTH AVE
BOSTON, MA 02215

CONSULTANT INFORMATION

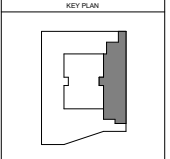
PROVIDED AS SUPPORTING DOCUMENTATION TO BEC FOR EVALUATION OF 2024 EXCELLENCE IN BUILDING ENCLOSURE CONSULTING AWARD.

THIS WORK PRODUCT IS PROTECTED BY US AND INTERNATIONAL COPYRIGHT LAWS. REPRODUCTION, DISTRIBUTION, DISPLAY AND USE OF THIS WORK PRODUCT WITHOUT WRITTEN PERMISSION OF THE SIGNATURE IS PROHIBITED.

WINDOW TYPES PROVIDED FOR REVIEW
DESIGN IN PROGRESS
THIS SHEET NOT FOR CONSTRUCTION

REVISIONS

NO	DESCRIPTION	DATE

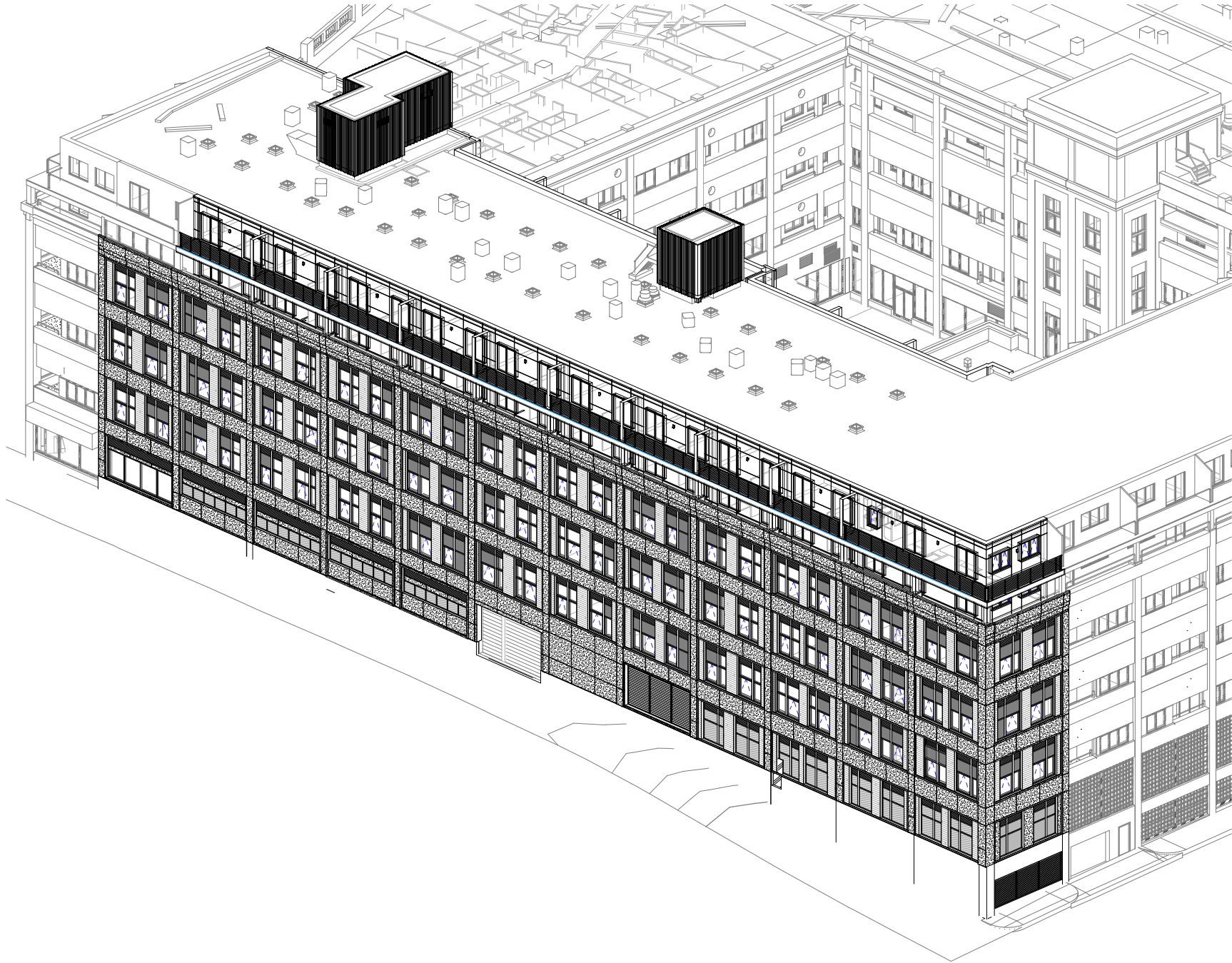


PROJECT NORTH **STAMP**

DATE: 04.16.2021
SCALE: 3/8" = 1'-0"
DRAWN BY: MS
PROJECT NUMBER: 190653
DRAWING TITLE: WINDOW TYPES

A1-821

DRAWING NUMBER
CONSTRUCTION DOCUMENTS



SIMPSON GUNTER & HUGHES
Engineering of Structures
and Building Environments
480 Totten Pond Road, Waltham MA 02451
781.907.9000
sgh.com

**margulies
perruzzi**
308 Congress Street, Boston MA 02210
617.482.3232
mparchitects.com

CLIENT INFORMATION

KAMELTON COMPANY
Atrium on Commonwealth
Phase 1 Facade Reclad
1070 COMMONWEALTH AVE
BOSTON, MA 02215

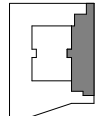
CONSULTANT INFORMATION

PROVIDED AS SUPPORTING
DOCUMENTATION TO BEC FOR
EVALUATION OF 2024 EXCELLENCE
IN BUILDING ENCLOSURE
CONSULTING AWARD.
THIS WORK PRODUCT IS
PROTECTED BY U.S. AND
INTERNATIONAL COPYRIGHT LAWS.
REPRODUCTION, DISTRIBUTION,
DISPLAY AND USE OF THE WORK
PRODUCT WITHOUT WRITTEN
PERMISSION OF THE SGH IS
PROHIBITED.

REVISIONS


NO	DESCRIPTION	DATE

KEY PLAN



PROJECT NORTH

STAMP


DATE: 04.16.2021
SCALE: 1/8" = 1'-0"
DRAWN BY: MB
PROJECT NUMBER: 190603
DRAWING TITLE
PHASE 1 AXONOMETRIC,
NORTHEAST

A1-900

DRAWING NUMBER
CONSTRUCTION
DOCUMENTS



PHASE 1 AXONOMETRIC - NORTHWEST
SCALE:

SHAWSON SUMPSTER & HOGAN
Engineering of Structures
and Building Enclosures
480 Totten Pond Road, Waltham MA 02451
781.807.9000
sgh.com

**margulies
perruzzi**
308 Congress Street, Boston MA 02210
617.482.3232
mparchitectsolutions.com

CLIENT INFORMATION

KAMILLON COMPANY
Atrium on Commonwealth
Phase 1 Facade Reclad
1079 COMMONWEALTH AVE
BOSTON, MA 02215

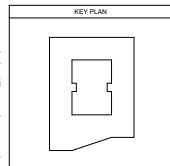
CONSULTANT INFORMATION

PROVIDED AS SUPPORTING
DOCUMENTATION TO BEC FOR
EVALUATION OF 2024 EXCELLENCE
IN BUILDING ENCLOSURE
CONSULTING AWARD.

THIS WORK PRODUCT IS
PROTECTED BY US AND
INTERNATIONAL COPYRIGHT LAWS.
REPRODUCTION, DISTRIBUTION,
DISPLAY AND USE OF THE WORK
PRODUCT WITHOUT WRITTEN
PERMISSION OF THE SGH IS
PROHIBITED.

REVISIONS

NO	DESCRIPTION	DATE



PROJECT NORTH

DATE: 04.16.2021
SCALE: MS
DRAWN BY: MS
PROJECT NUMBER: 190653
DRAWING TITLE
PHASE 1 AXONOMETRIC,
NORTHWEST

A1-902

DRAWING NUMBER
CONSTRUCTION
DOCUMENTS

CLIENT INFORMATION



Atrium on Commonwealth
Phase 1 Facade Reclad
1079 COMMONWEALTH AVE
BOSTON, MA 02215

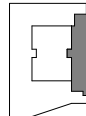
CONSULTANT INFORMATION

PROVIDED AS SUPPORTING
DOCUMENTATION TO BEC FOR
EVALUATION OF 2024 EXCELLENCE
IN BUILDING ENCLOSURE
CONSULTING AWARD.
THIS WORK PRODUCT IS
PROTECTED BY US AND
INTERNATIONAL COPYRIGHT LAWS.
REPRODUCTION, DISTRIBUTION,
DISPLAY AND USE OF THE WORK
PRODUCT WITHOUT WRITTEN
PERMISSION OF THE SGH IS
PROHIBITED.

REVISIONS

NO	DESCRIPTION	DATE

KEY PLAN



PROJECT NORTH

STAMP



DATE: 04.16.2021
SCALE: _____
DRAWN BY: NT
PROJECT NUMBER: 190653
DRAWING TITLE
RENDERINGS

A1-904

DRAWING NUMBER
CONSTRUCTION
DOCUMENTS



Reynobond: Pewter | Pewter | Copper Penny | Italian Walnut



1079 COMM AVE – FAÇADE STUDY

SIMPSON GUMPERTZ & HEGER



marguliesperruzzi

DATE: 04.09.2021

CLIENT INFORMATION

**THE
HAMILTON COMPANY**
Atrium on Commonwealth
Phase 1 Facade Reclad
1079 COMMONWEALTH AVE
BOSTON, MA 02215

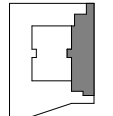
CONSULTANT INFORMATION

PROVIDED AS SUPPORTING
DOCUMENTATION TO BEC FOR
EVALUATION OF 2024 EXCELLENCE
IN BUILDING ENCLOSURE
CONSULTING AWARD.
THIS WORK PRODUCT IS
PROTECTED BY US AND
INTERNATIONAL COPYRIGHT LAWS.
REPRODUCTION, DISTRIBUTION,
DISPLAY AND USE OF THE WORK
PRODUCT WITHOUT WRITTEN
PERMISSION OF THE SGH IS
PROHIBITED.

REVISIONS

NO	DESCRIPTION	DATE

KEY PLAN



PROJECT NORTH



DATE: 04.16.2021
SCALE: _____
DRAWN BY: NT
PROJECT NUMBER: 190653
DRAWING TITLE
RENDERINGS

A1-905

DRAWING NUMBER
CONSTRUCTION
DOCUMENTS

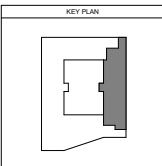


Reynobond: Pewter | Cadet Grey | Copper Penny | Italian Walnut



REVISIONS

NO	DESCRIPTION	DATE



PROJECT NORTH

DATE: 04.16.2021
SCALE: NT
DRAWN BY: NT
PROJECT NUMBER: 190653
DRAWING TITLE: RENDERINGS

A1-906
CONSTRUCTION
DOCUMENTS



Reynobond: Pewter | Cadet Grey | Copper Penny | Italian Walnut