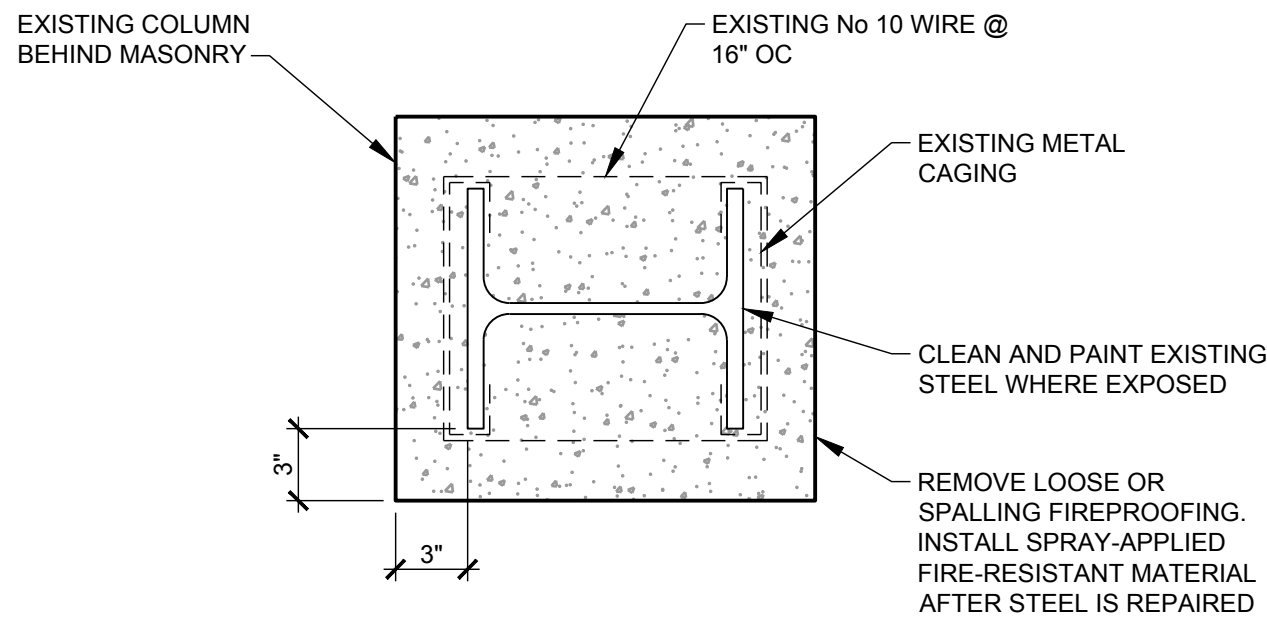


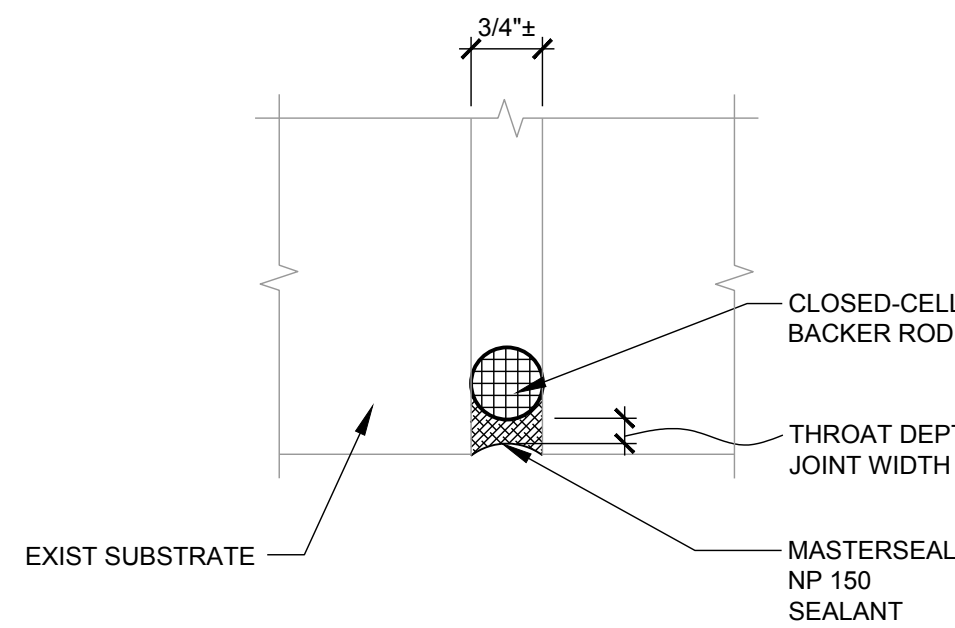
J:\CHICAGO\31-009494-10-ST\_ELIZABETH\_CDS\_AE5DC\_CRITICAL\_EXAMPROPERT OF THE OFFICE OF THE GENERAL COUNSEL OF ASCENSION  
CONFIDENTIAL ASSESSMENTN AT ASCENSIONACAD\9494-R501.DWG 2/21/2023 1:06:26 PM PEREZ, JOSE A



- NOTES:
1. NEW FIREPROOFING TO BE MEDIUM DENSITY, 430 PSF BOND STRENGTH AND APPLIED AT A THICKNESS TO MEET A MINIMUM 3 HOUR FIRE RATING.

## PAINT STRUCTURAL STEEL

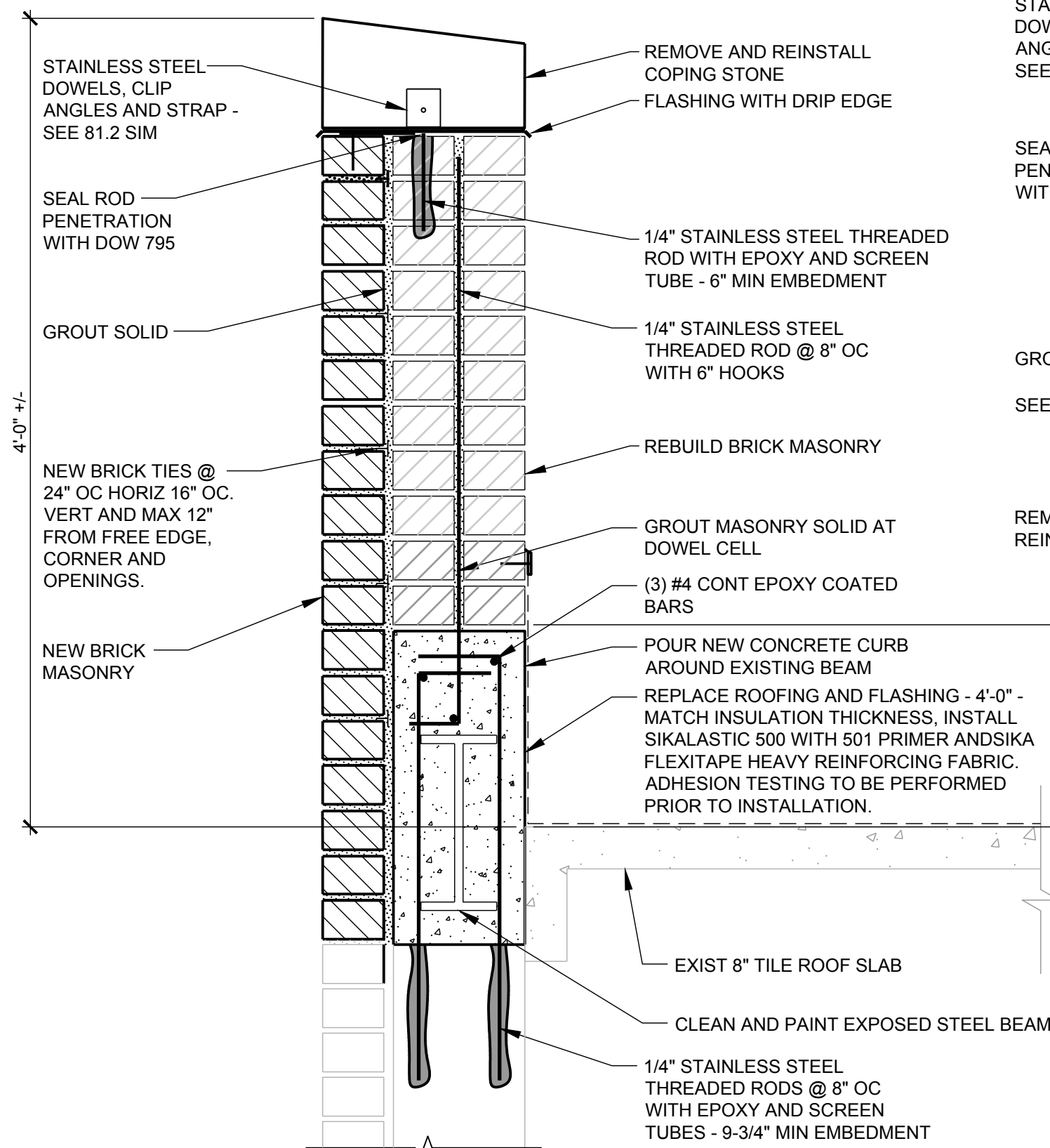
45.6



- NOTES:
1. REMOVE ALL EXISTING MORTAR AS REQUIRED TO EXPOSE BASE FACADE.
  2. CLEAN ALL DUST AND DEBRIS FROM JOINT, MAKE SURE JOINT IS CLEAN AND DRY.
  3. PREPARE AND PRIME SEALANT CAVITY ACCORDING TO SEALANT MANUFACTURER'S RECOMMENDATIONS.

## NEW CONTROL JOINT

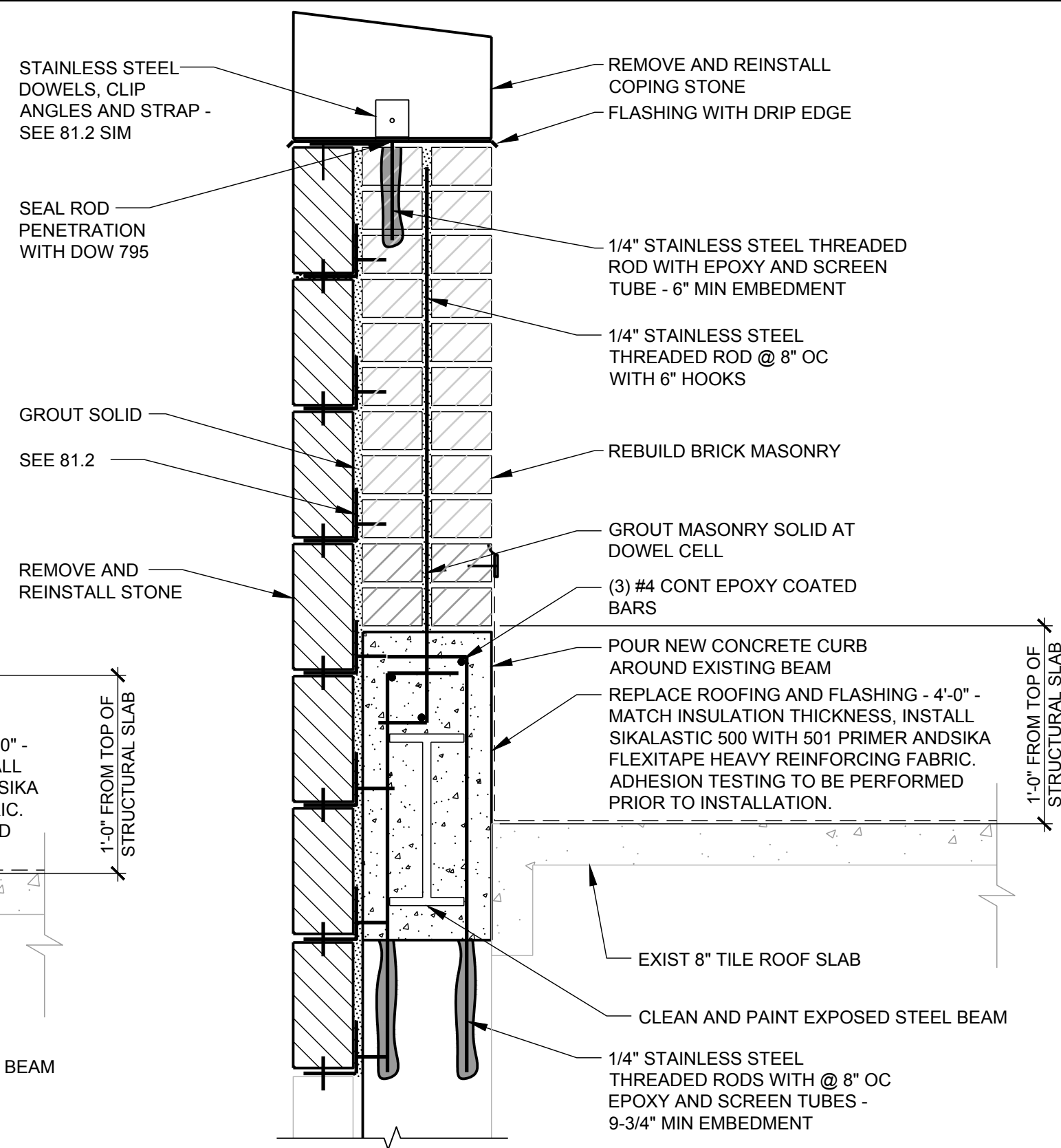
74.5



- NOTES:
1. COORDINATE WITH ROOF REPAIRS.
  2. ROOFING REPLACEMENT ALONG PARAPET WALL IS INCIDENTAL TO WORK.

## REPLACE PARAPET WALL - BRICK CLADDING

80.4



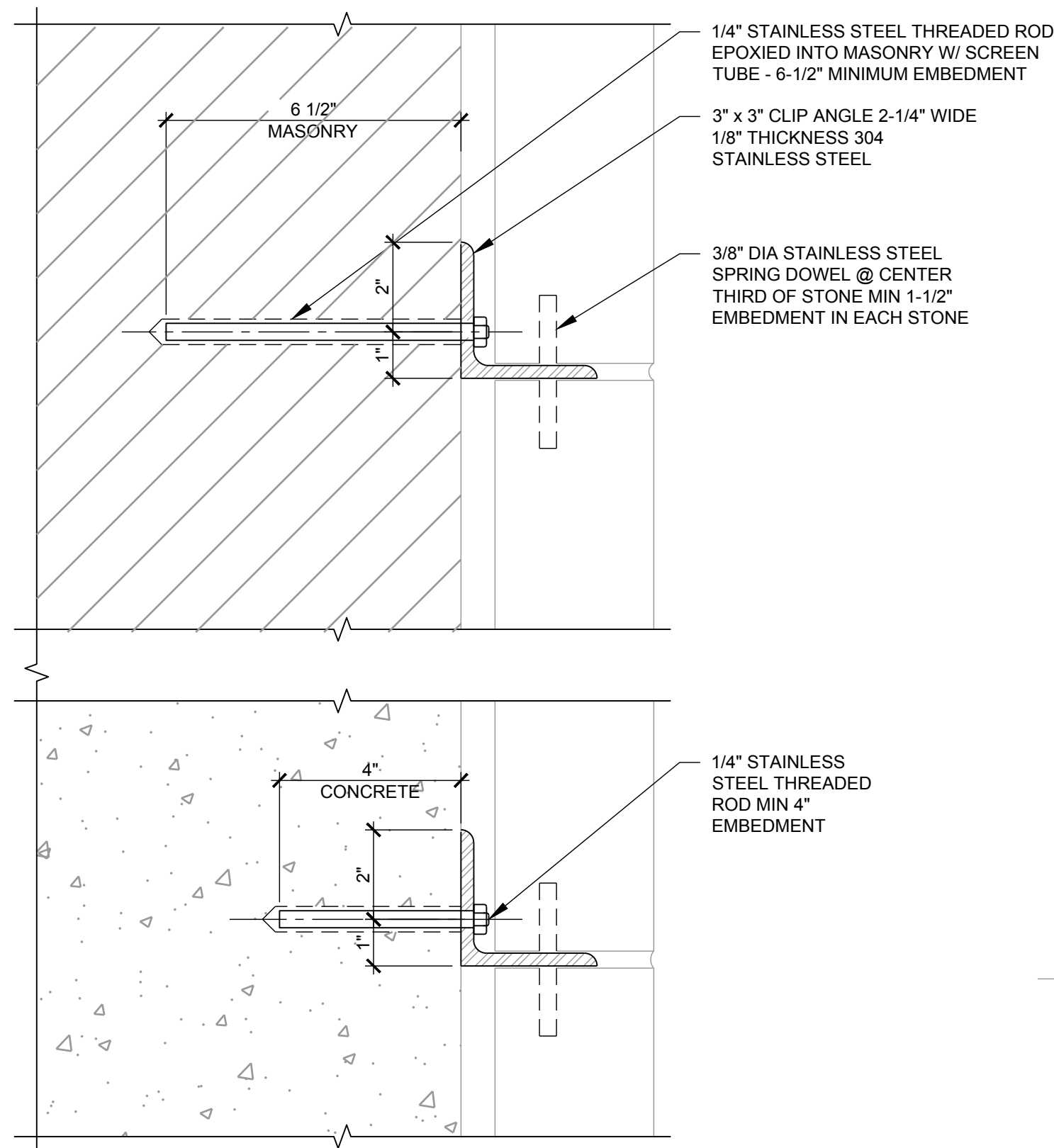
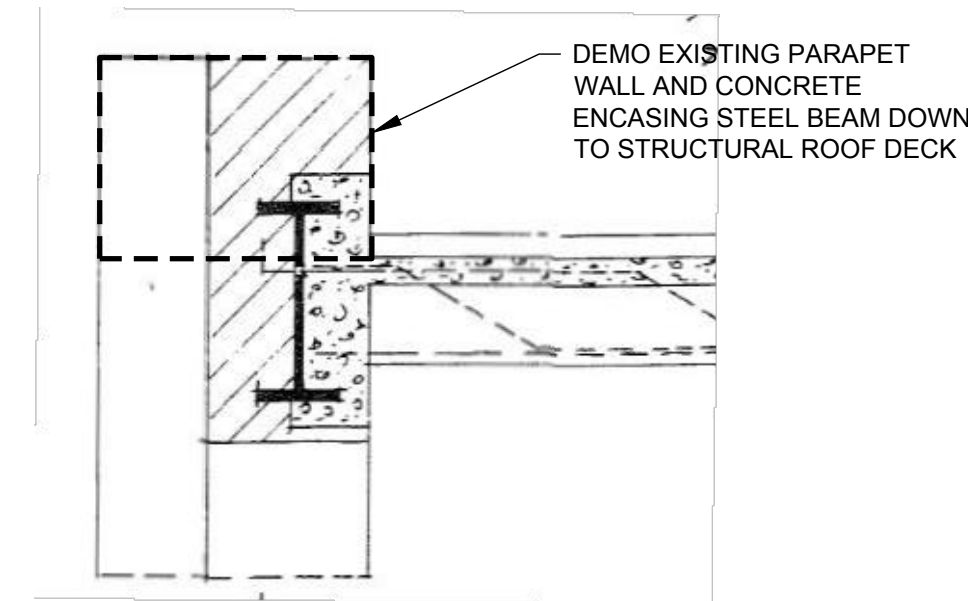
- NOTES:
1. COORDINATE WITH ROOF REPAIRS.
  2. ROOFING REPLACEMENT ALONG PARAPET WALL IS INCIDENTAL TO WORK.

## REPLACE PARAPET WALL - STONE CLADDING

80.4.1

## EXISTING CONDITION AT PARAPET WALL/ROOF ABOVE 9TH FLOOR

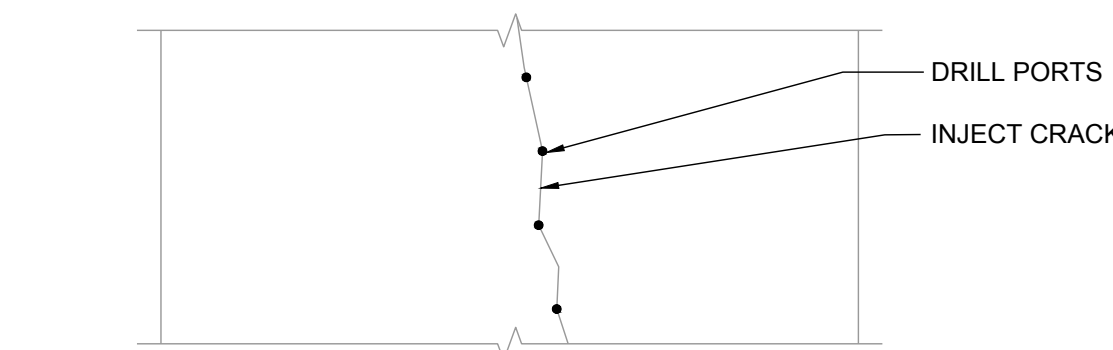
80.4.2



- NOTES:
1. MINIMUM 2 ANCHORS @ TOP AND BOTTOM OF EACH STONE FOR STONES. ANCHORS TO BE LOCATED 5" MIN FROM OUTER EDGES OF CONCRETE COLUMN OR MASONRY PIER.

## NEW STEEL CLIP INSTALLATION

81.2

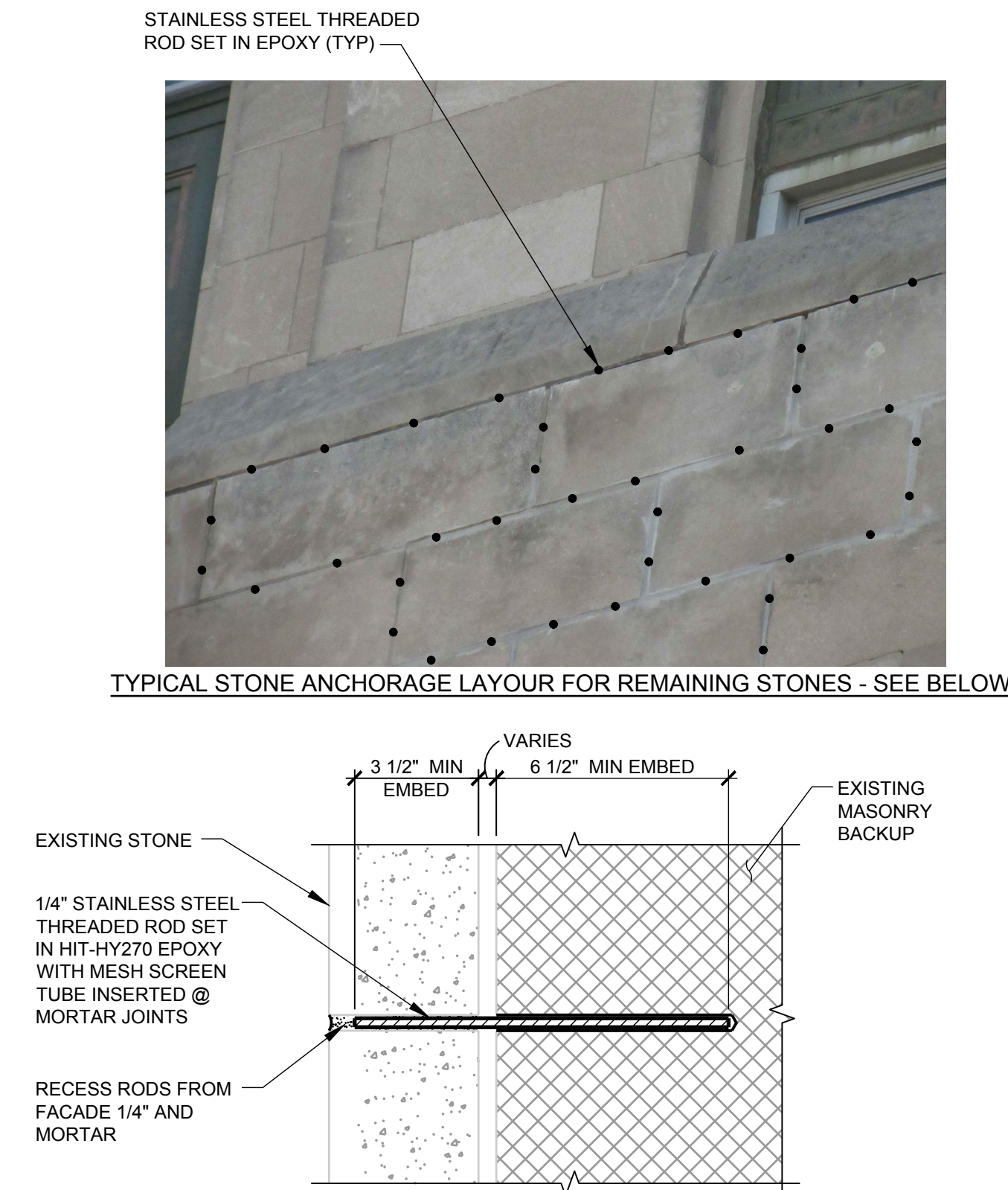


- NOTES:
1. DRILL INJECTION PORTS IN AT A DOWNWARD ANGLE.
  2. USE NON-STAINING CLAY OR SEALANT TO COVER CRACK DURING INJECTION.
  3. START AT LOWEST POINT & INJECT CRACK UNTIL GROUT EXITS NEXT PORT.
  4. CLEAN ALL RUNS OR OVERFLOW IMMEDIATELY.
  5. LET EPOXY DRY FOR 24 HOURS BEFORE REMOVING SEALANT.

## REPAIR BROKEN STONE

81.7

(CRACKS 1/16" OR LESS)



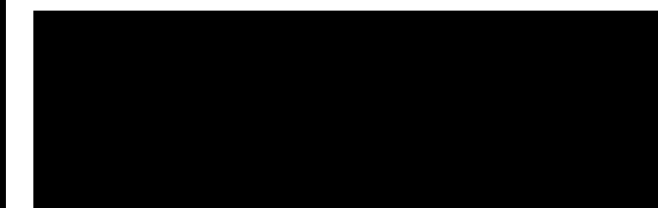
- NOTES:
1. FIELD TENSION TEST WITH A HYDRAULIC RAM IS REQUIRED. TEST ROD TO BE 580 LBS OF TENSION. RODS TO BE INSTALL IN PLASTIC SLEEVE IN 4" STONE TO TEST TENSION IN BRICK MASONRY BACK-UP. TEST 3 RODS PER ROD INSTALLATION CREW MEMBER. APPLY LOAD IN 4 EVEN INCREMENTS. MEASURE ROD EXTENSION AND RECOVERY WITH DIAL INSTRUMENTS. RECORD ROD EXTENSION AT EACH LOAD INCREMENT. SUBMIT TEST DATA TO ENGINEER/ARCHITECT.
  2. TYPICAL RODS FOR ANCHORAGE SHALL BE EPOXY BONDED TO STONE. DO NOT USE PLASTIC SLEEVES.

## ANCHORAGE OF STONES TO REMAIN

81.9



2895 Greenspoint Parkway, Suite 600  
Hoffman Estates IL 60169  
847.697.2640 Ph  
www.walkerconsultants.com



CHICAGO, ILLINOIS

MARK	DATE	DESCRIPTION
2	04/01/2024	BULLETIN No.1
1	02/21/2023	BID CLARIFICATIONS
REVISIONS		
ISSUE: BULLETIN No.1		
ISSUE DATE: 04/06/2024		
PROJECT NO: 31-009494.10		
DRAWN BY: SPK		
CHECKED BY: KNN		

COPYRIGHT © 2024. ALL RIGHTS RESERVED.  
NO PART OF THIS DOCUMENT MAY BE REPRODUCED  
IN ANY FORM OR BY ANY MEANS WITHOUT  
PERMISSION FROM WALKER CONSULTANTS.

SHEET TITLE:  
REPAIR DETAILS

R-501